

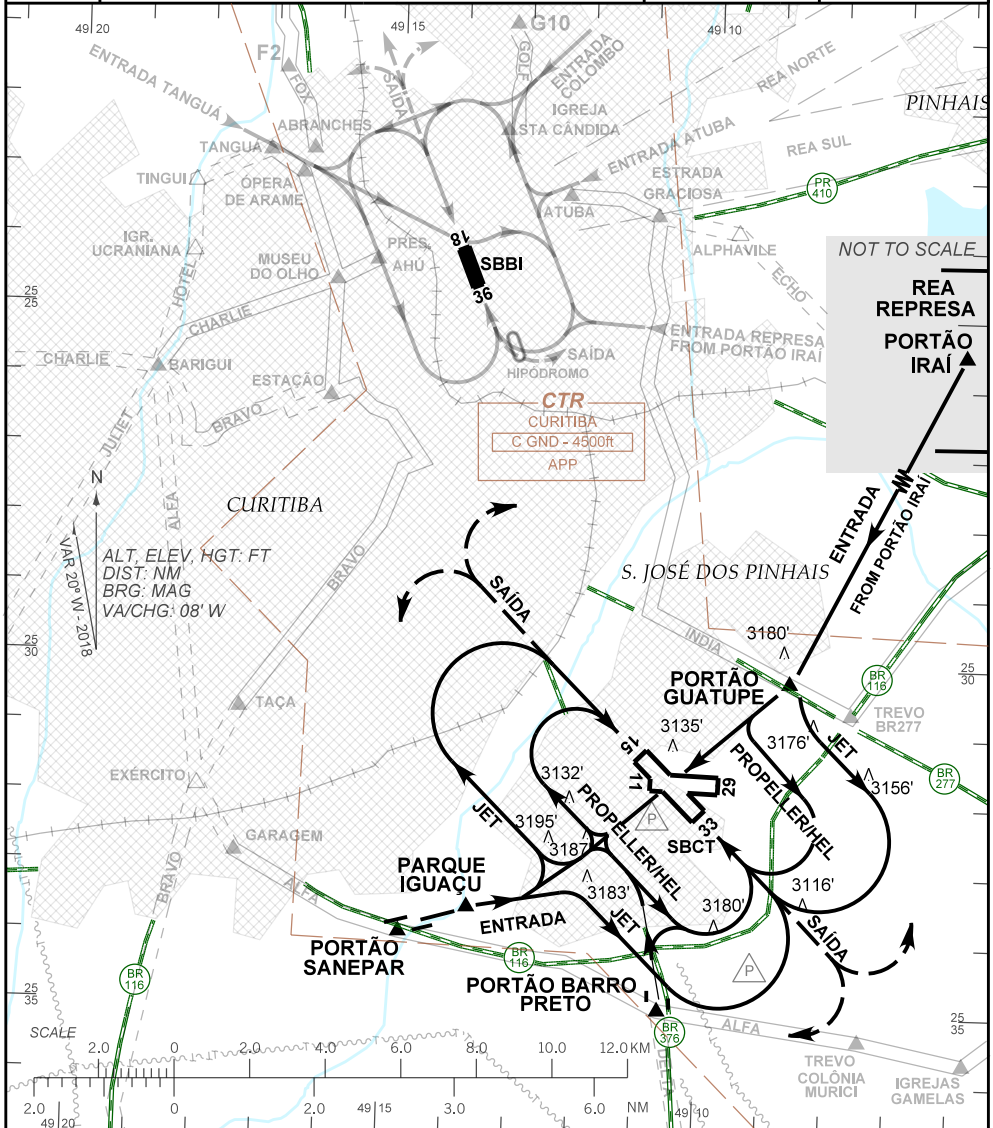
**VISUAL APPROACH CHART
(VAC)**

CURITIBA / Afonso Pena, INTL (SBCT)

AD ELEV: 2989'

RWY 15/33

D-ATIS 127.80	APP CURITIBA					TWR CURITIBA 118.15 121.50		GNDC CURITIBA 121.90
	119.70	119.95	120.65	120.95	129.55	133.15	121.50	



RMK:

1 - ALTITUDES MÍNIMAS NO CIRCUITO DE TRÁFEGO / MINIMUM ALTITUDES IN TRAFFIC CIRCUIT:

- JATO / JET: 4500'
- HÉLICE / PROPELLER: 4000'
- HEL: 3600'

2 - INFORMAÇÕES COMPLEMENTARES NO VERSO.

SEE REVERSE SIDE FOR ADDITIONAL INFORMATION.

CHANGES: NEW CHART.

RMK

3 - CKT RWY 11/29 PADRÃO E SUJEITO AUTH ATC.
STANDARD TRAFFIC PATTERN TO RWY 11/29 AND SUBJECT ATC CLEARANCE.

4 - PARA POUSO EM SBBI, VER VAC DESSE AERÓDROMO.
FOR LANDING AT SBBI, SEE VAC OF THIS AERODROME.