

**INSTRUMENT APPROACH  
CHART (IAC)**

**RIO BRANCO / Plácido de Castro (SBRB)**

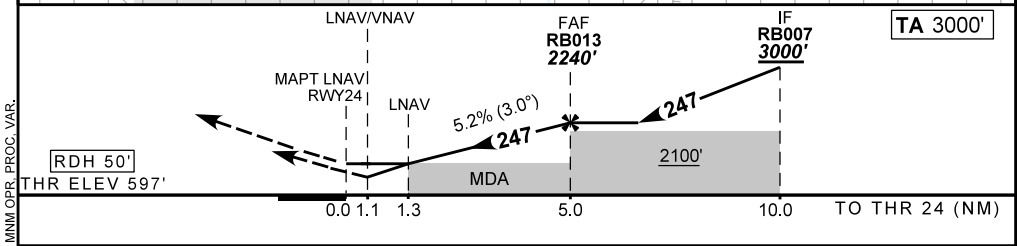
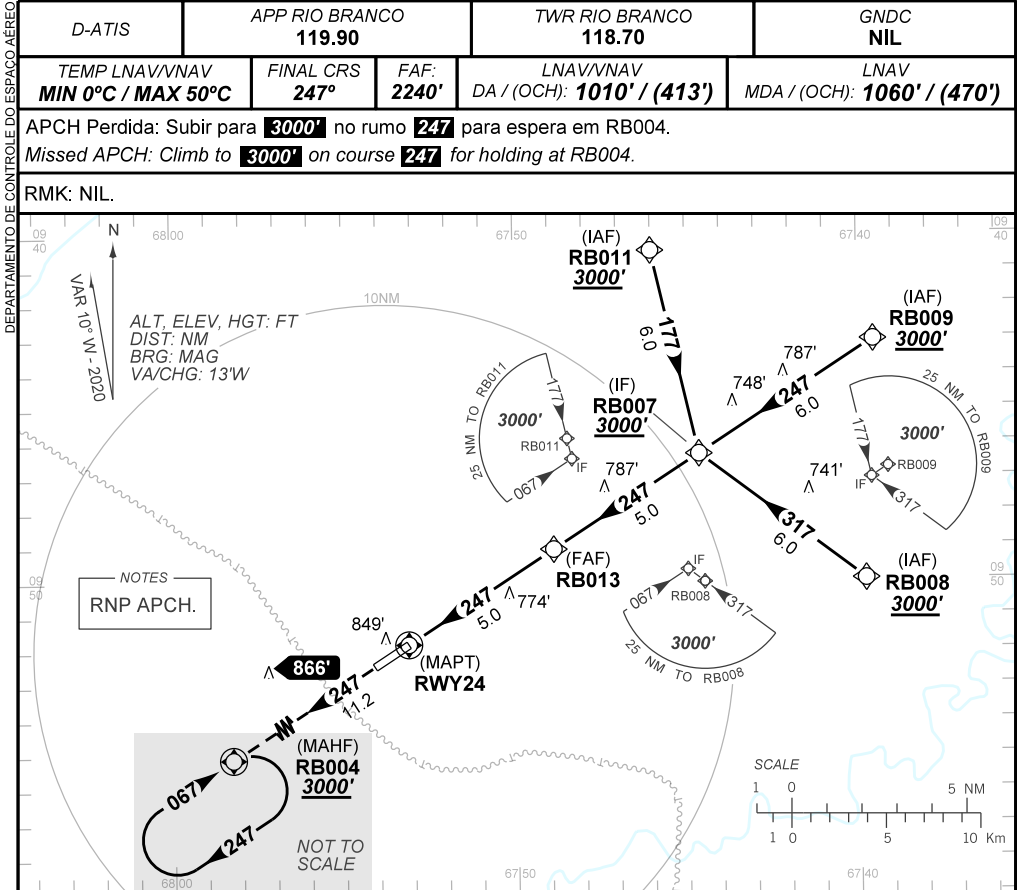
**AD ELEV: 633'**

**RNP RWY 24**

D-ATIS	APP RIO BRANCO <b>119.90</b>	TWR RIO BRANCO <b>118.70</b>	GND C <b>NIL</b>
TEMP LNAV/VNAV <b>MIN 0°C / MAX 50°C</b>	FINAL CRS <b>247°</b>	FAF: <b>2240'</b>	LNAV/VNAV <b>DA / (OCH): 1010' / (413')</b>
		MDA / (OCH): <b>1060' / (470')</b>	

APCH Perdida: Subir para **3000'** no rumo **247** para espera em RB004.  
Missed APCH: Climb to **3000'** on course **247** for holding at RB004.

RMK: NIL.



RWY24	1.1	2.0	3.0	4.0	RB013		Ground Speed (KT)	090	110	130	150	170	190
ALT	1010	1284	1602	1921	2240		FPM	500	600	700	800	900	NA
(HGT)	413	687	1005	1324	1643		FAF-MAPT	NIL					

STRAIGHT-IN	CAT	A	B	C	D	E
	DA / (OCH)	1010' / (413')				NA
LNAV/VNAV	ALS/NO ALS/ RVR ALS (m)	NIL / 1900 / NIL				
	MDA / (OCH)	1060' / (470')				
LNAV	ALS/NO ALS/ RVR ALS (m)	NIL / 1600 / NIL		NIL / 2200 / NIL		
	MDA / (OCH)	NA				
CIRCLING	MDA / (OCH)	NA				
	VIS (m)	NA				

CHANGES: D-ATIS, FREQ, HDG, LAYOUT, MIN OPR, PROC, VAR.

DEPARTAMENTO DE CONTROLE DO ESPAÇO AÉREO