

**INSTRUMENT APPROACH
CHART (IAC)**

Rio de Janeiro / Santa Cruz, MIL (SBSC)

AD ELEV: 10'

VOR T RWY 23

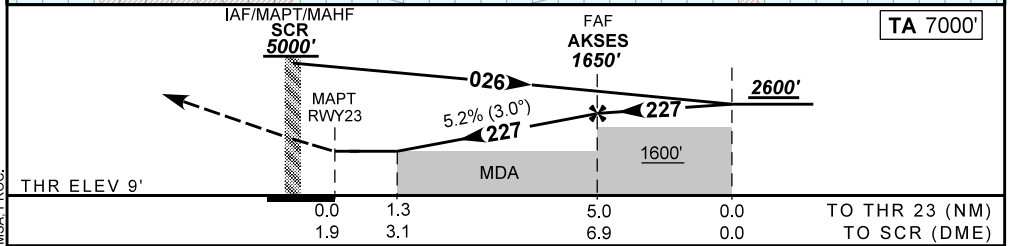
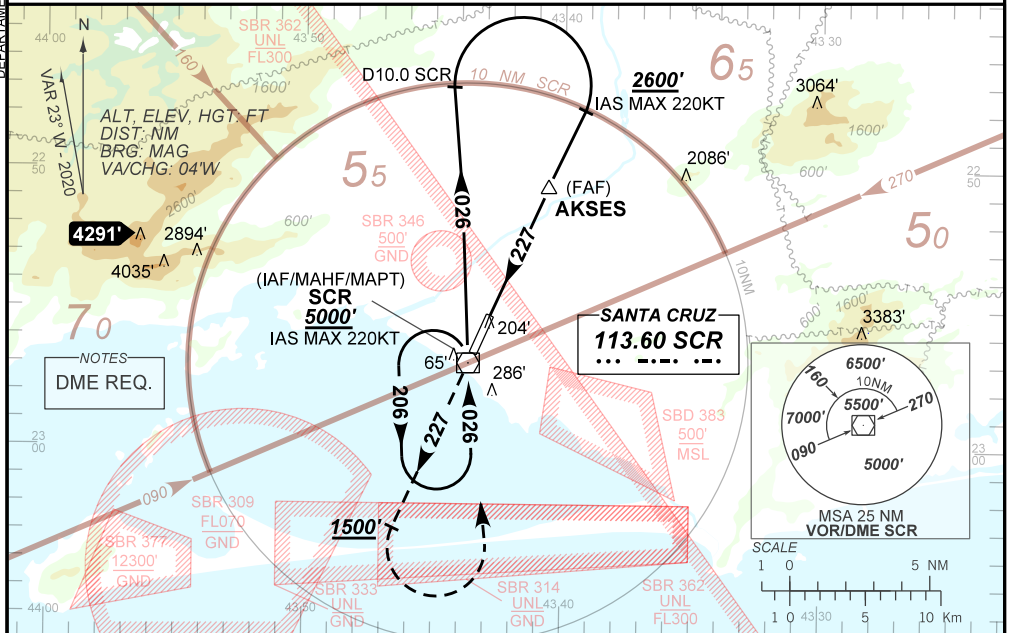
ATIS NIL	APP RIO 133.70 132.50 134.40 121.25 119.00 120.55 124.95 134.95 129.80 125.95	TWR SANTA CRUZ 118.80 122.90	GNDC SANTA CRUZ 121.80
--------------------	---	--	----------------------------------

VOR SCR 113.60 MHz	FINAL CRS 227°	FAF: 1650'	N/A	VOR MDA / (OCH): 460' / (450')
------------------------------	--------------------------	----------------------	-----	--

APCH Perdida: Subir para **5000'**. Manter RDL **227** VOR SCR até passar **1500'**. Após, curvar à ESQUERDA direto VOR SCR para espera.

Missed APCH: Climb to **5000'**. Maintain **227** RDL SCR VOR until passing **1500'**. Then, turn LEFT direct to SCR VOR for holding.

RMK: NIL.



THR ELEV 9'	0.0	1.3	5.0	0.0	TO THR 23 (NM)
	1.9	3.1	6.9	0.0	TO SCR (DME)

RWY23	1.3	2.0	3.0	4.0	AKSES		Ground Speed (KT)	90	110	130	150	170	190
ALT	460	696	1015	1333	1650		FPM	500	600	700	800	900	1000
(HGT)	450	686	1005	1323	1640		FAF-MAPT	NA					

STRAIGHT-IN	CAT	A	B	C	D	E
	MDA / (OCH)	460' / (450')				
VOR	ALS/NO ALS/ RVR ALS (m)	NIL / 1600 / NIL		NIL / 2100 / NIL		
CIRCLING	MDA / (OCH)	NA				