

**INSTRUMENT APPROACH  
CHART (IAC)**

**RIO BRANCO / Plácido de Castro (SBRB)**

**AD ELEV: 633'**

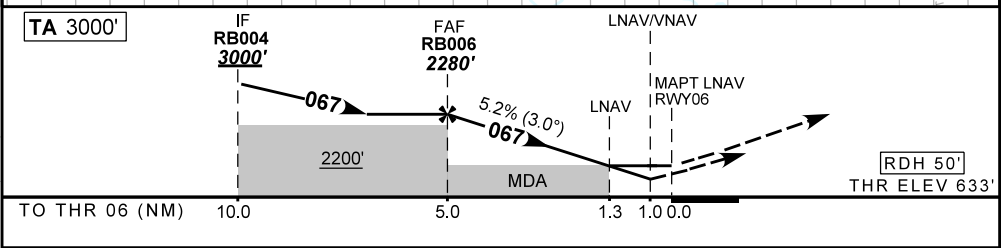
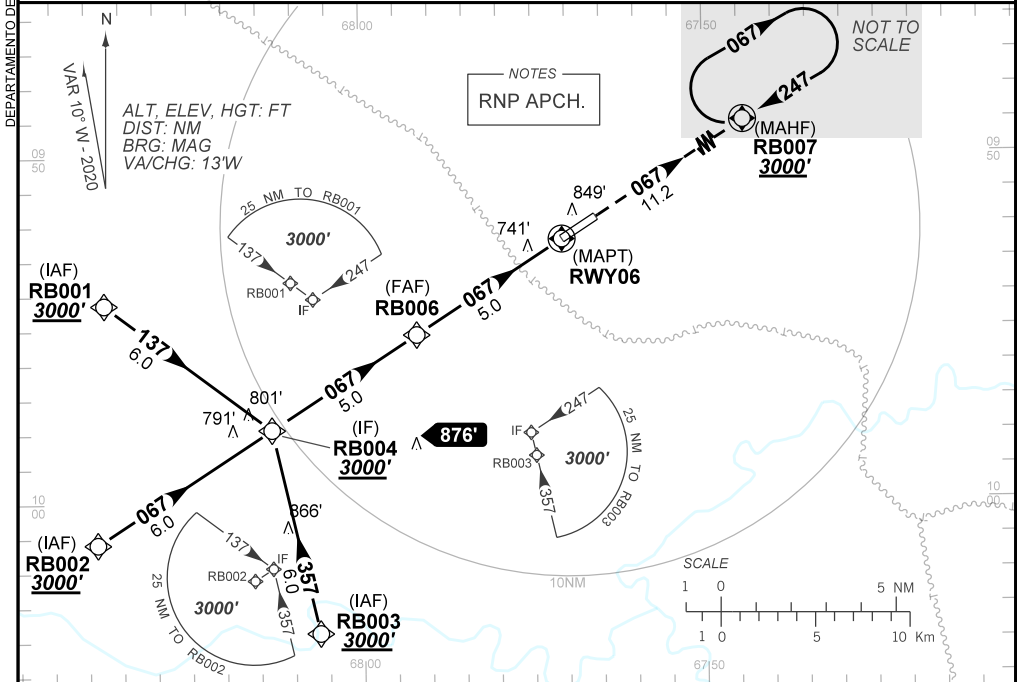
**RNP RWY 06**

D-ATIS	APP RIO BRANCO <b>119.90</b>	TWR RIO BRANCO <b>118.70</b>	GNDC <b>NIL</b>
TEMP LNAV/VNAV <b>MIN 0°C / MAX 50°C</b>	FINAL CRS <b>067°</b>	FAF: <b>2280'</b>	LNAV/VNAV DA / (OCH): <b>1010' / (378')</b>
		LNAV MDA / (OCH): <b>1080' / (450')</b>	

APCH Perdida: Subir para **3000'** no rumo **067°** para espera em RB007.

Missed APCH: Climb to **3000'** on course **067°** for holding at RB007.

RMK: NIL.



	RB006	4.0	3.0	2.0	1.0	RWY06	Ground Speed (KT)	090	110	130	150	170	190	
		2280	1957	1638	1320	1010	FPM	500	600	700	800	900	NA	
		1647	1324	1005	687	378	(HGT)	FAF-MAPT						NIL

STRAIGHT-IN	CAT	A	B	C	D	E
	DA / (OCH)	1010' / (378')				NA
LNAV/VNAV	1000 / 1700 / 1000					
LNAV	MDA / (OCH)	1080' / (450')				
	ALS/NO ALS/ RVR ALS (m)	800 / 1600 / 700		1400 / 2100 / 1250		
CIRCLING	MDA / (OCH)	NA				
	VIS (m)					

CHANGES: D-ATIS, FREQ, HDG, LAYOUT, MIN OPR, PROC, VAR.