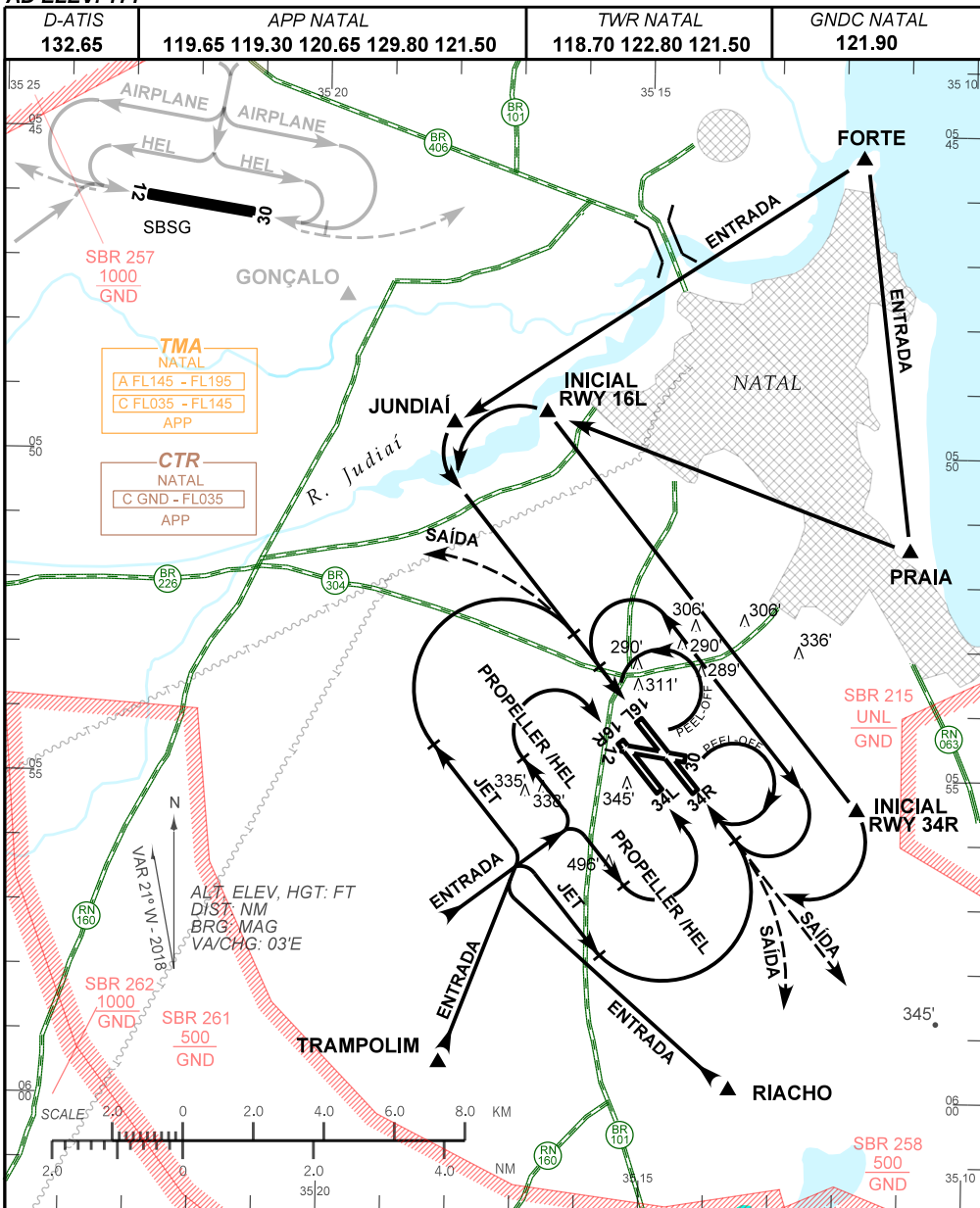


VISUAL APPROACH CHART  
(VAC)

NATAL / Augusto Severo, MIL (SBNT)

AD ELEV: 171'

RWY 16L/34R - 16R/34L



**RMK:**

- 1 - ALTITUDES MÍNIMAS NO CIRCUITO DE TRÁFEGO / MINIMUM ALTITUDES IN TRAFFIC CIRCUIT:
  - 1.1 - JATO / JET: 1700'
  - 1.2 - HÉLICE / PROPELLER: 1200'
  - 1.3 - HEL: 700'
- 2 - INFORMAÇÕES COMPLEMENTARES NO VERSO.  
SEE REVERSE SIDE FOR ADDITIONAL INFORMATION.

CHANGES: FREQ.

—RMK—

- 3 - CKT RWY12/30 PADRÃO E SUJEITO AUTH ATC.  
*STANDARD TRAFFIC PATTERN TO RWY 12/30 AND SUBJECT ATC CLEARANCE.*
- 4 - CKT SETOR "E" EXCLUSIVO ACFT ESQUADRÕES AÉREOS SEDIADOS EM SBNT  
OU DESLOCADOS PARA ALA10 .  
*SECTOR "E" CKT AVAILABLE JUST FOR AIR SQUADRON BASED IN SBNT OR  
REPLACED TO ALA10.*
- 5 - PARA POUSO EM SBSG, VER VAC DESSE AERÓDROMO.  
*FOR LANDING IN SBSG, SEE VAC OF THIS AERODROME.*
- 6 - OBSERVAR AIC SOBRE CIRCULAÇÃO AÉREA VISUAL NA TERMINAL NATAL (SBNT).  
*SEE AIC ABOUT VISUAL FLIGHT IN NATAL TERMINAL AREA (SBXT).*