

**INSTRUMENT APPROACH  
CHART (IAC)**

**PARAUPEBAS / Carajás, INTL (SBCJ)**

**AD ELEV: 2064'**

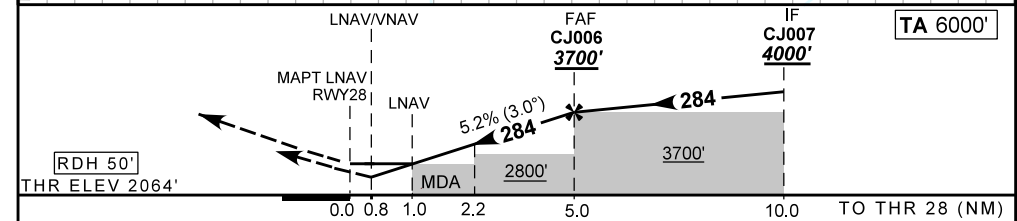
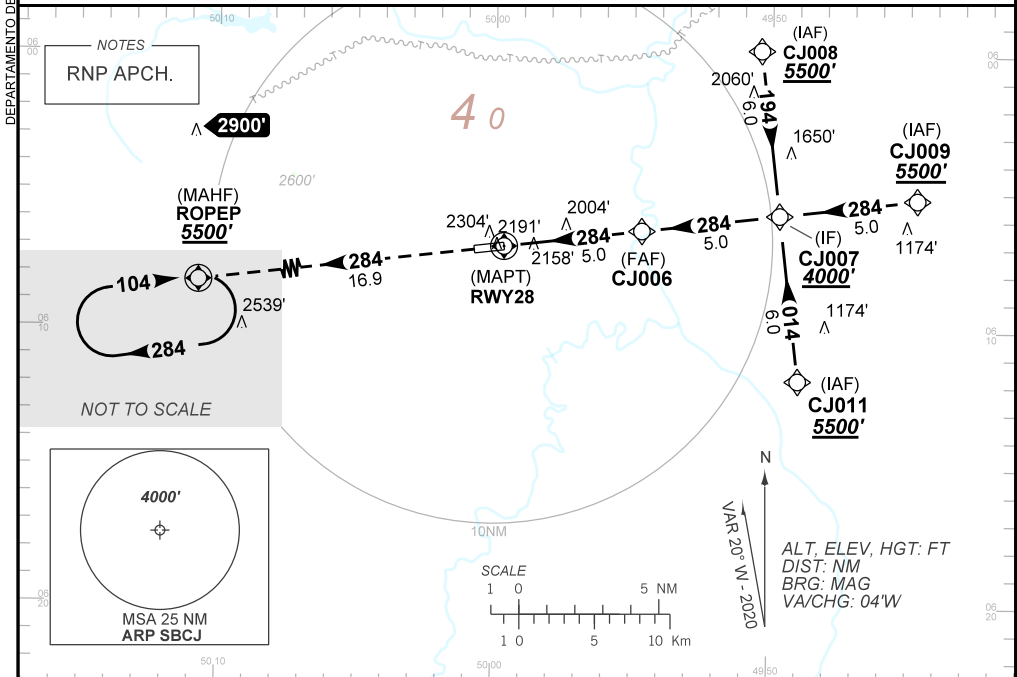
**RNP RWY 28**

ATIS NIL	APP NIL	AFIS CARAJÁS 131.70	GND NIL
-------------	------------	------------------------	------------

TEMP LNAV/VNAV MIN 0° / MAX 46°	FINAL CRS 284°	FAF: 3700'	LNAV/VNAV DA / (OCH): 2371' / (322')	LNAV MDA / (OCH): 2440' / (391')
------------------------------------	-------------------	---------------	---	-------------------------------------

APCH Perdida: Subir para **5500'**. Manter rumo **284** até ROPEP para espera.  
Missed APCH: Climb to **5500'**. Maintain course **284** until ROPEP for holding.

RMK: NIL.



CJ006	4.0	3.0	2.2	1.0	0.8	RWY28	Ground Speed (KT)	090	110	130	150	170	190
3706	3388	3069	2815	2440	2371	(ALT)	FPM	500	600	700	800	900	NA
1642	1324	1005	751	391	322	(HGT)	FAF-MAPT	NA					

STRAIGHT-IN	CAT	A	B	C	D	E	
	DA / (OCH)	2371' / (322')					NA
LNAV/VNAV	ALS/NO ALS/ RVR ALS (m)	NIL / 1500/ 1400					
	MDA / OCH	2440' / (391')					
LNAV	ALS/NO ALS/ RVR ALS (m)	NIL / 1800 / 1700					
	MDA / (OCH)	NA					
CIRCLING	VIS (m)	NA					