

**INSTRUMENT APPROACH  
CHART (IAC)**

**PARAUPEBAS / Carajás (SBCJ)**

**AD ELEV: 2064'**

**RNP RWY 10**

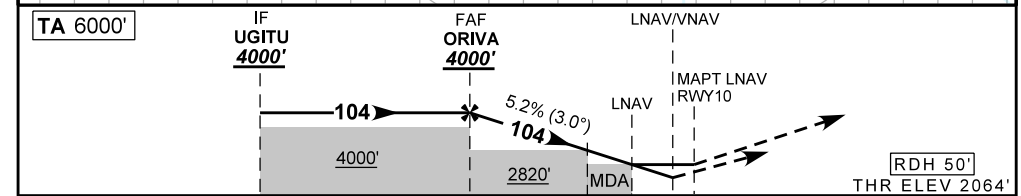
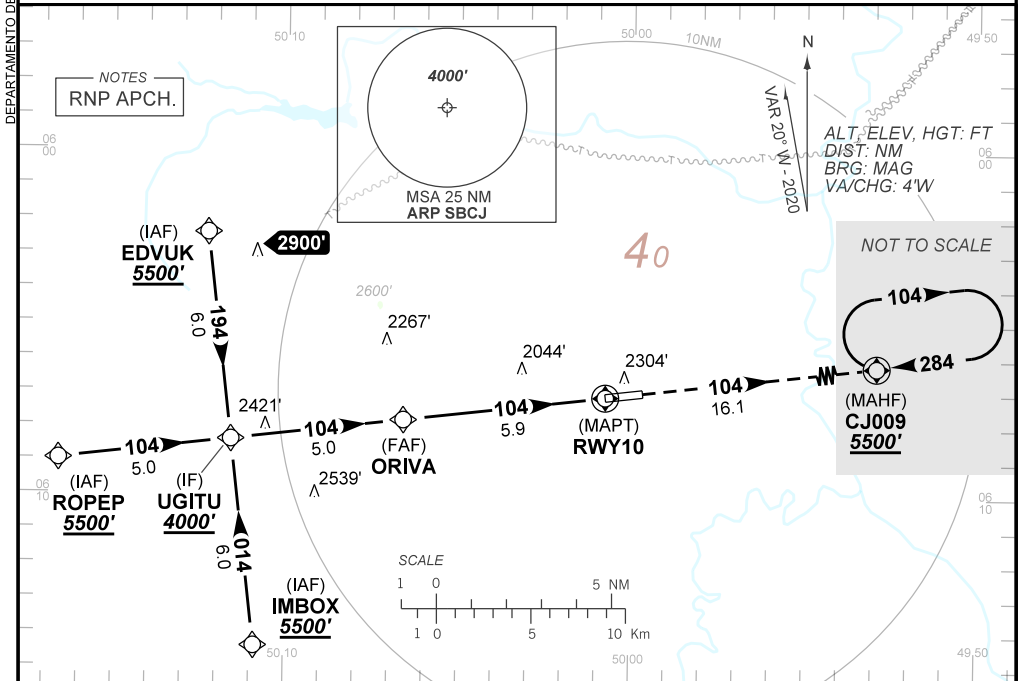
ATIS NIL	APP NIL	AFIS 131.70	GNDC NIL
-------------	------------	----------------	-------------

TEMP LNAV/VNAV <b>MIN -10°C / MAX 45°C</b>	FINAL CRS <b>104°</b>	FAF: <b>4000'</b>	LNAV/VNAV DA / (OCH): <b>2377' / (327')</b>	LNAV MDA / (OCH): <b>2450' / (400')</b>
---	--------------------------	----------------------	--	--

APCH Perdida: Subir para **5500'** mantendo o rumo **104** até CJ009 para espera.

Missed APCH: Climb to **5500'** maintaining course **104** until CJ009 for holding.

RMK: NIL.



TO THR 10 (NM) 10.9 5.9 2.2 1.0 0.8 0.0

	ORIVA	4.0	3.0	2.0	1.0	RWY10	Ground Speed (KT)	090	110	130	150	170	190
	4000	3388	3069	2751	2450	ALT	FPM	500	600	700	800	900	NA
	1950	1324	1005	687	400	(HGT)	FAF-MAPT	NA					

STRAIGHT-IN	CAT	A	B	C	D	E
	DA / (OCH)	2377' / (327')				
LNAV/VNAV	ALS/NO ALS/ RVR ALS (m)	NIL / 1500 / NIL				
	MDA / (OCH)	2450' / (400')				
LNAV	ALS/NO ALS/ RVR ALS (m)	NIL / 1600 / NIL		NIL / 1800 / NIL		
	MDA / (OCH)	NA				
CIRCLING	MDA / (OCH)	NA				
	VIS (m)	NA				

CHANGES: NEW CHART.

DEPARTAMENTO DE CONTROLE DO ESPAÇO AÉREO