

**INSTRUMENT APPROACH
CHART (IAC)**

PARAUPEBAS / Carajás (SBCJ)

AD ELEV: 2064'

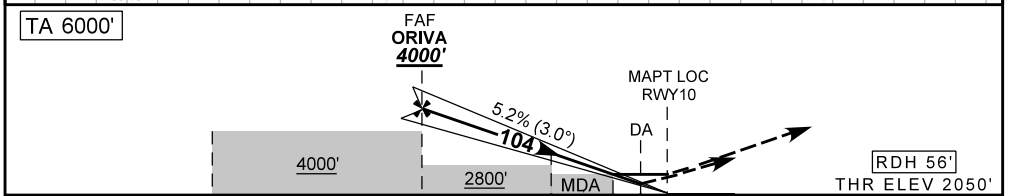
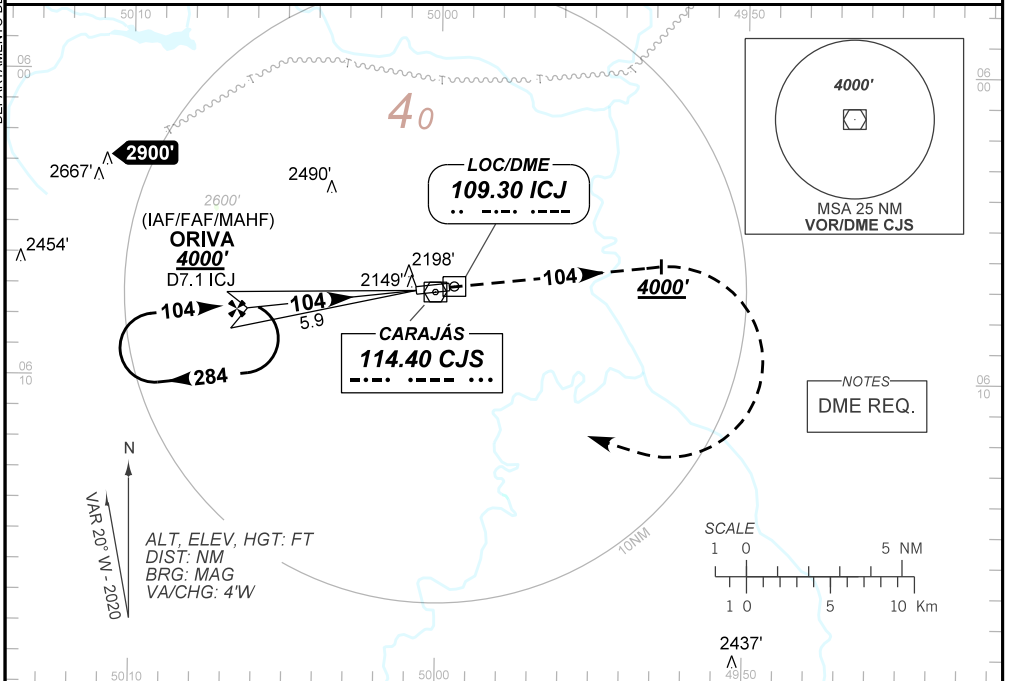
ILS V OR LOC V RWY 10

ATIS NIL		APP NIL		AFIS 131.70		GNDC NIL	
-------------	--	------------	--	----------------	--	-------------	--

LOC ICJ 109.30 MHz	FINAL CRS 104°	FAF: 4000'	CAT I DA / (OCH): 2250' / (200')	LOC ONLY MDA / (OCH): 2560' / (510')	
------------------------------	--------------------------	----------------------	--	--	--

APCH Perdida: Manter o rumo **104** até atingir **4000'**. Então, curvar à DIREITA direto ORIVA para espera.
Missed APCH: Maintain course **104** until **4000'**. Then, turn RIGHT direct to ORIVA for holding.

RMK: NIL.



TO THR 10 (NM)	5.9	2.2	1.0	0.5	0.0
TO ICJ (NM)	7.1	3.4	2.2	1.7	1.2

ORIVA	4.0	3.0	2.2	2.0	1.0	RWY10	Ground Speed (KT)	090	110	130	150	170	190
4000	3394	3069	2800	2746	2420	ALT	FPM	500	600	700	800	900	1000
1950	1344	1019	750	696	370	(HGT)	FAF-MAPT	NA					

STRAIGHT-IN	CAT	A	B	C	D	E
	DA / (OCH)	2250' / (200')				
CAT I	ALS/NO ALS/ RVR ALS (m)	NIL / 1200/ NIL				
	MDA / (OCH)	2560' / (510')				
LOC	ALS/NO ALS/ RVR ALS (m)	NIL / 1700 / 1550				
	MDA / (OCH)	NA				
CIRCLING	VIS (m)	NA				