

**INSTRUMENT APPROACH  
CHART (IAC)**

**MANAUS / Ponta Pelada, MIL (SBMN)**

**ILS Y RWY09**

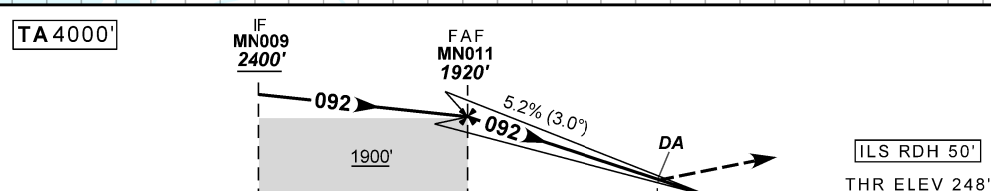
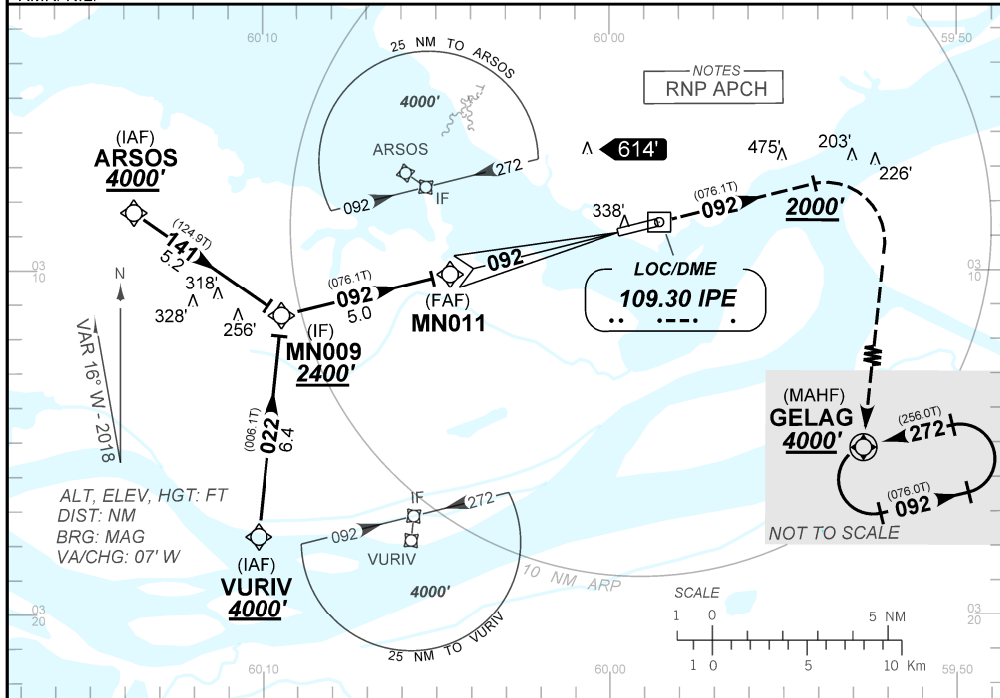
**AD ELEV: 257'**

ATIS <b>NIL</b>	APP MANAUS <b>119.25 119.70 120.40</b>	TWR PONTA PELADA <b>118.60</b>	GNDC <b>NIL</b>
LOC IPE <b>109.30 MHz</b>	FINAL CRS <b>092°</b>	FAF <b>1920'</b>	CAT I DA / (OCH): <b>REFER TO MNM</b>
			<b>N/A</b>

APCH Perdida: 1) Subir para **4000'** com gradiente MNM 4%. Manter rumo **092** até cruzar **2000'**. Então, curvar à DIREITA direto GELAG para espera. 2) IAS MAX 250KT.

Missed APCH: Climb to **4000'** with gradient MNM 4%. Maintain course **092** until passing **2000'**. Then, turn RIGHT direct to GELAG for holding. 2) IAS MAX 250KT.

RMK: NIL.



TO THR 09 (NM)	10.0	5.0	0.0
TO IPE (DME)	11.2	6.2	1.2

NIL	RWY09	KT	NIL
NIL	ALT	FPM	NIL
NIL	(HGT)	FAF-MAPT	NIL

STRAIGHT-IN	CAT	A	B	C	D	E
CAT I	DA / (OCH)	<b>448' / (200')</b>				<b>517' / (269')</b>
	ALS/NO ALS/ RVR ALS (m)	NIL / 1200 / NIL				NIL / 1300 / NIL
CIRCLING	MDA / (OCH)	NA				
	VIS (m)					

CHANGES: ELEV. FREQ.