

INSTRUMENT APPROACH CHART (IAC)

VITÓRIA / Eurico de Aguiar Salles (SBVT)

AD ELEV: 34'

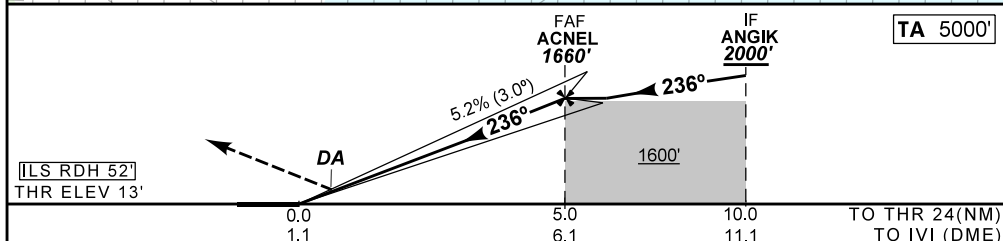
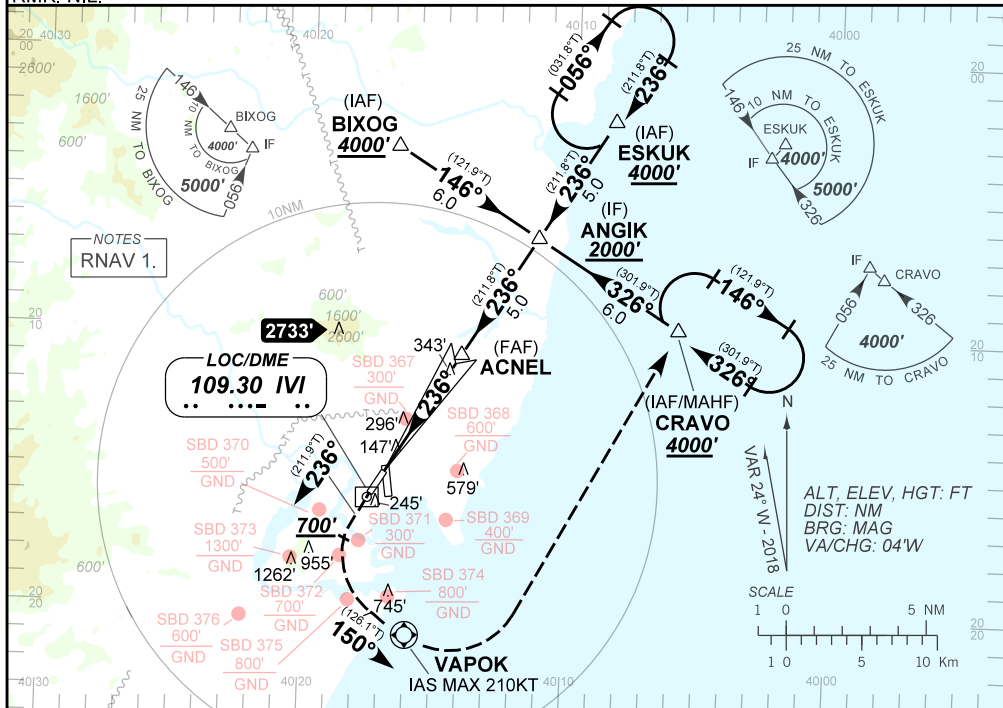
ILS W RWY 24

ATIS 127.575	APP VITÓRIA 119.85 121.50	TWR VITÓRIA 118.10 121.50	GNDC VITÓRIA 121.95
LOC IVI 109.30 MHz	FINAL CRS 236°	FAF 1660'	CAT I (Missed APCH 4,3%) DA / (OCH): 310' / (300')
			CAT I (Missed APCH 2,5%) DA / (OCH): 490' / (480')

APCH Perdida: 1) Subir para **4000'**. Manter rumo **236** até passar **700'**. Curvar à **ESQUERDA**, rumo **150** para **VAPOK**. Após, curvar à **ESQUERDA** direto **CRAVO** para espera.

Missed APCH: 1) Climb to **4000'**. Maintain course **236** until passing **700'**. Turn **LEFT**, course **150** to **VAPOK**. After, turn **LEFT** direct to **CRAVO** for holding.

RMK: NIL.



ILS RDH 52' THR ELEV 13'	0.0	5.0	10.0	TO THR 24(NM)
	1.1	6.1	11.1	TO IVI (DME)

RWY24	0.8	2.0	3.0	4.0	ACNEL						
ALT	310	702	1020	1339	1660						
(HGT)	297	689	1007	1326	1647						

KT	090	110	130	150	170	190
FPM	500	600	700	800	900	NA
FAF-MAPT	NA					

STRAIGHT-IN	CAT	A	B	C	D	E
CAT I	DA / (OCH)		310' / (300')			NA
*Missed APCH	ALS/NO ALS/ RVR ALS (m)		NIL / 1400 / NIL			
Climb Gradient	4.3%		490' / (480')			
CAT I	DA / (OCH)		490' / (480')			
*Missed APCH	ALS/NO ALS/RVR ALS (m)		NIL / 2200 / NIL			
Climb Gradient	2.5%					
LOC	MDA / (OCH)			NA		
	VIS (m)					

CHANGES: NEW CHART.