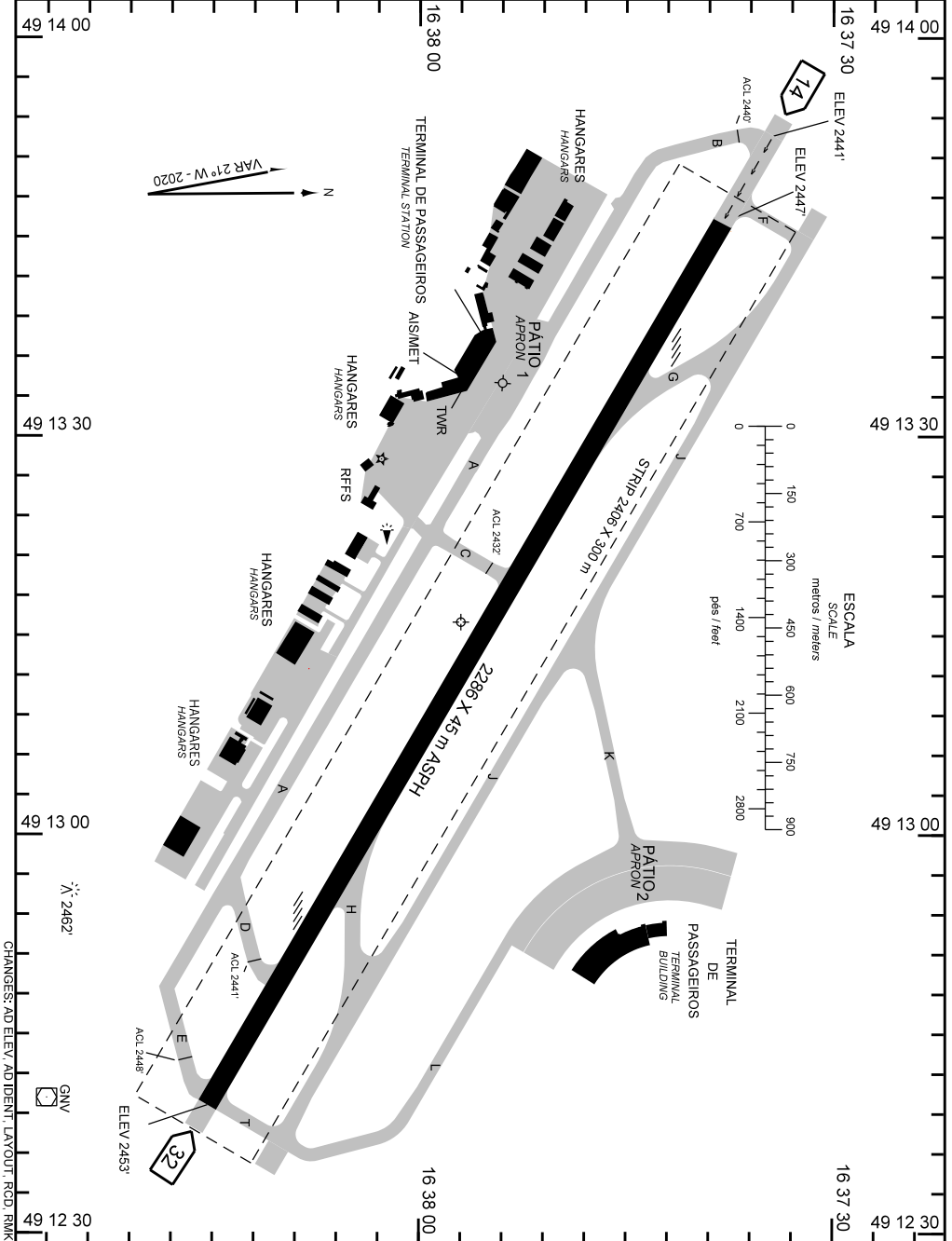


AD ELEV: 2453'

ARP S16 37 57 W049 13 16

ATIS 127.675	CLRD 121.05	GNDC 121.70	TWR 118.70 121.50	APRON NIL
-----------------	----------------	----------------	----------------------	--------------



**ADC - SBGO: INFORMAÇÕES COMPLEMENTARES / COMPLEMENTARY INFORMATION**

**CARACTERÍSTICAS FÍSICAS / PHYSICAL CHARACTERISTICS**

PISTA RUNWAY				DIMENSÕES(m) DIMENSIONS(m)				PCN	TIPO DE SUPERFÍCIE SURFACE KIND		
RWY	BRG MAG	Tipo Type	RCD	RWY	SWY	CWY	STRIP	RWY	RWY	SWY	
a	b	c	d	e	f	g	h	i	j	k	
14	141	NPA	4C	2286x45			2406 x 300	67/F/B/X/T	ASPH		
32	321	NPA	4C								

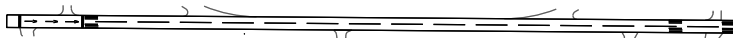
**DISTÂNCIAS DECLARADAS, AUXÍLIOS VISUAIS E COORDENADAS DAS CABECEIRAS  
DECLARED DISTANCES, VISUAL AIDS AND THRESHOLD COORDINATES**

RWY	TORA(m)	TODA(m)	ASDA(m)	LDA(m)	AUXÍLIOS / AIDS	ALTURA GEOIDAL(m) GEOID HEIGHT(m)	COORDENADAS COORDINATES
14	2286	2286	2286	2286	PAPI (2,985°)	-10,24	S16 37 38 W049 13 46
32	2286	2286	2286	2286	PAPI		S16 38 15 W049 12 40

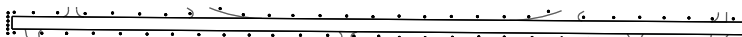
**SERVIÇO DE SALVAMENTO E CONTRAINCÊNDIO / RESCUE AND FIRE FIGHTING SERVICE: RFFS REQ - 7**

**RWY 14 / 32**

**Sinalização horizontal / Marking Aids**



**Auxílios luminosos / Lighting Aids**



**RMK:** 1) MEHT: RWY 14 - 55FT  
RWY 32 - 73FT

CHANGES: AD.ELEV. AD.IDENT. LAYOUT. RCD. RMK