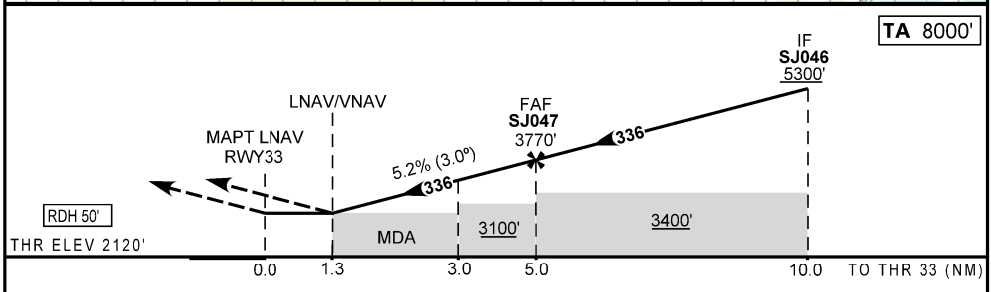
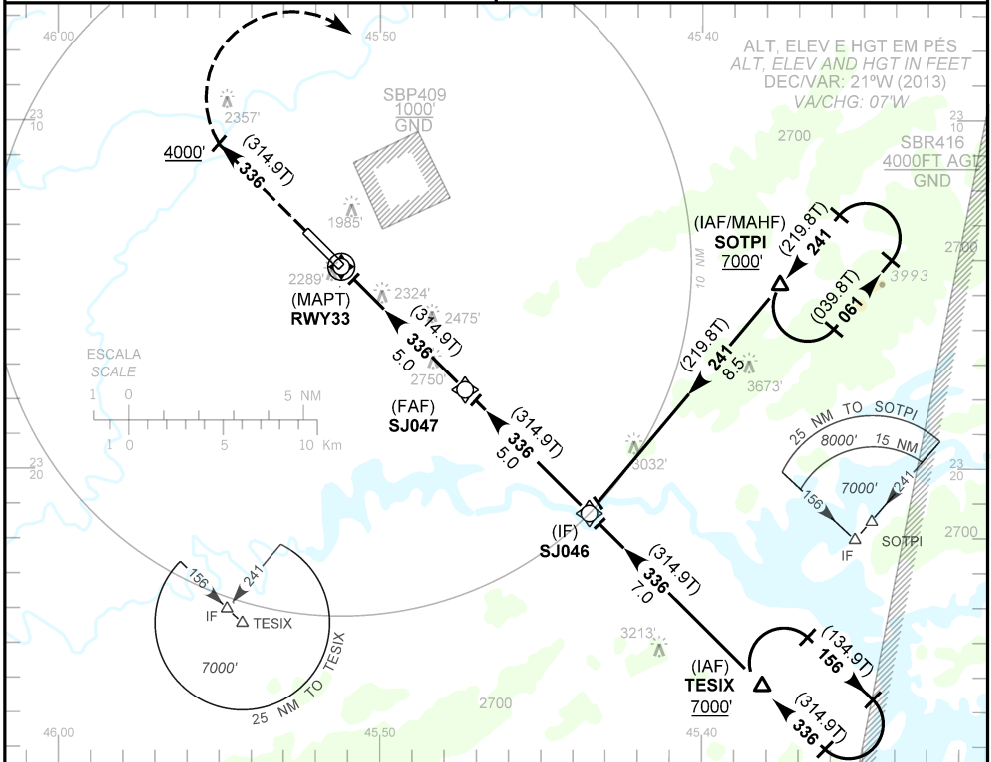


AD ELEV: 2123'	D-ATIS 127.925	APP SÃO PAULO 119.60 119.80 120.05 125.60 129.50 133.85 134.90 135.75 121.50	TWR SÃO JOSÉ 118.50 121.50	GNDC SÃO JOSÉ 121.950
----------------	-------------------	--	-------------------------------	--------------------------

RMK: 1) Procedimento BARO-VNAV não autorizado abaixo de 0 °C.
 RMK: 1) BARO-VNAV not authorized below 0 °C.

Aproximação Perdida: Subir para 7000', gradiente MNM 5%. Manter rumo 336 até 4000'. Curvar à direita para espera em SOTPI.
 Missed Approach: Climb to 7000', MNM gradient 5%. Maintain course 336 until 4000'. Turn right for holding at SOTPI.



RWY33	1.3	2.0	3.0	4.0	SJ047		KT	090	110	130	150	170	190
ALT	2571	2807	3126	3444	3762		FPM	500	600	700	800	900	1000
(HGT)	451	687	1005	1324	1642		FAF-MAPT 5NM	NIL					

POUSO DIRETO STRAIGHT-IN	CAT	A	B	C	D	E
	DA / OCH	2571 / 460				
LNAV / VNAV	ALS/NO ALS/ RVR ALS (m)	NIL / 2100 / NIL				
	MDA / OCH	2580 / 460				
LNAV	ALS/NO ALS/RVR ALS (m)	NIL / 1600 / NIL		NIL / 2200 / NIL		

CIRCULAR TO CIRCLE	MDA / OCH	NA
	VIS (m)	

CHANGES: D-ATIS, EAC, ELEV, FREQ, MNM, CRR, RWY