

**INSTRUMENT APPROACH
CHART (IAC)**

CAMPINAS / Viracopos, INTL (SBKP)

AD ELEV: 2170'

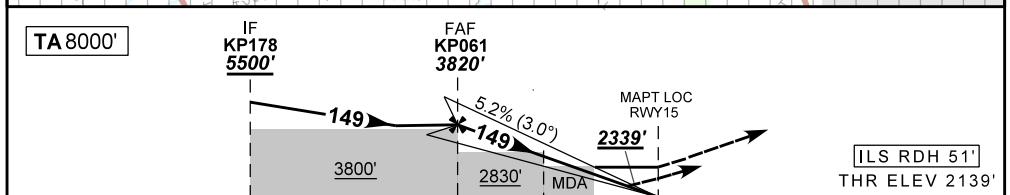
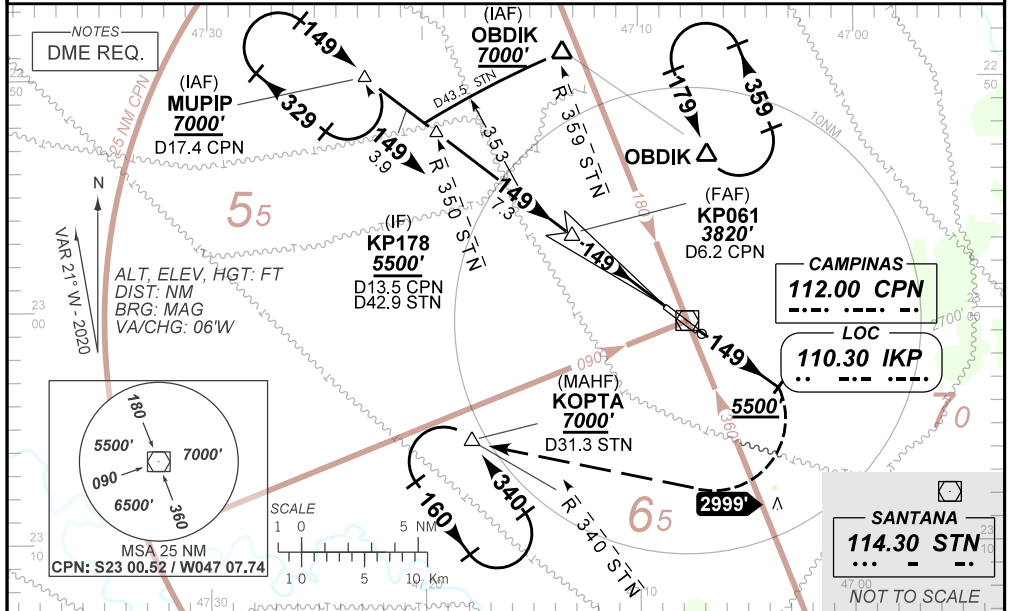
ILS V ou/ou LOC V RWY 15

D-ATIS 127.825	APP SÃO PAULO 132.10 120.25 119.80 119.25 129.75 121.50	TWR CAMPINAS 118.25 121.50	GNDC CAMPINAS 121.90
--------------------------	---	--------------------------------------	--------------------------------

LOC IKP 110.30 MHz	FINAL CRS 149°	FAF: 3820'	CAT I DA / (OCH): 2339' / (200')	LOC only MDA / (OCH): 2600' / (461')
------------------------------	--------------------------	----------------------	--	--

APCH Perdida: Subir para **7000'**, gradiente MNM 5% até **5500'**. Manter rumo **149** até **5500'**. Após, curvar à DIREITA direto KOPTA para espera.
Missed APCH: Climb to **7000'**, MNM gradient 5% until **5500'**. Maintain course **149** until **5500'**. Then, turn RIGHT direct to KOPTA for holding.

RMK: 1) (*) VIS RVR ALS 550m para aproximação utilizando Diretor de Voo, Piloto Automático ou Head-Up Display ; 1) (*) RVR VIS ALS 550m for approach using a Flight Director, Autopilot or Head-Up Display (HUD).



TO THR 15 (NM)	12.3	5.0	2.0	1.3	0.5	0.0
TO CPN (DME)	13.5	6.2	3.2	2.5	1.7	1.2

	KP061	4.0	3.0	2.0	1.3	RWY15		KT	090	110	130	150	170	190
	3820	3490	3160	2837	2600	ALT		FPM	500	600	700	800	900	1050
	1681	1351	1021	698	461	(HGT)		FAF-MAPT				NA		

STRAIGHT-IN	CAT	A	B	C	D	E
CAT I	DA / (OCH)	2339' / (200')				NA
	ALS/NO ALS/ RVR ALS (m)	800 / 1200 / 700				
LOC	MDA / (OCH)	2600' / (461')				NA
	ALS/NO ALS/ RVR ALS (m)	800 / 1600 / NIL		1500 / 2200 / NIL		
CIRCLING	MDA / (OCH)	NA				
	VIS (m)					

CHANGES: D-ATIS: