

**INSTRUMENT APPROACH
CHART (IAC)**

ARACATI / Regional de Aracati (SBAC)

AD ELEV: 117'

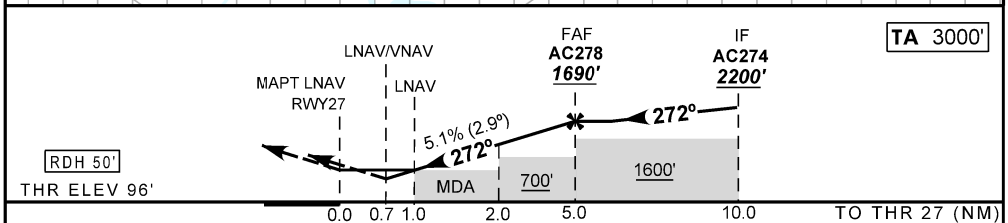
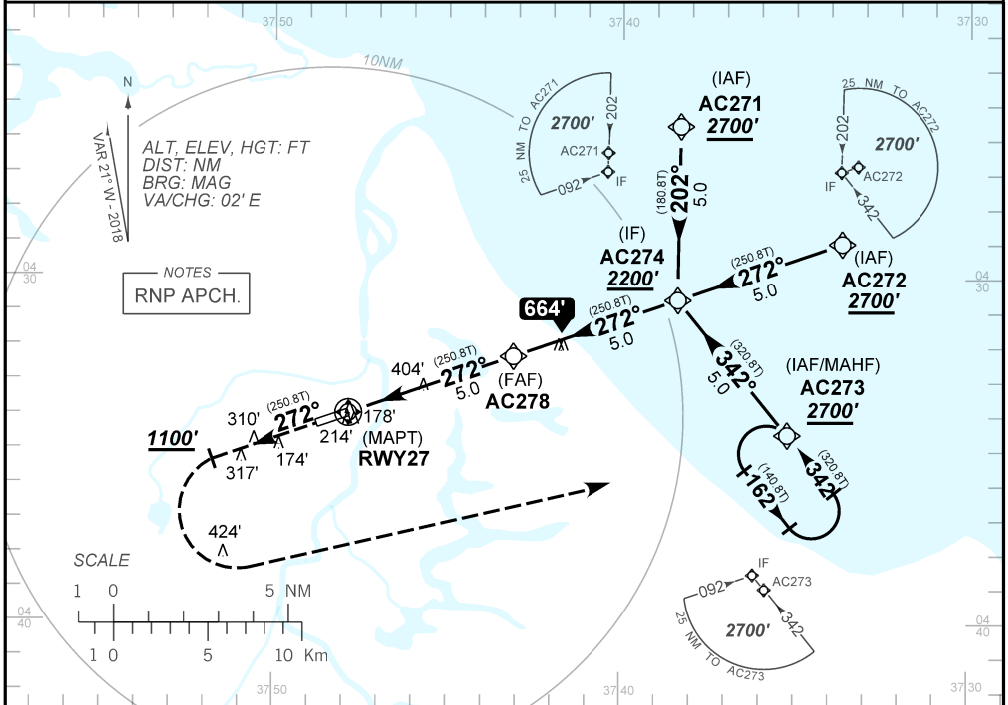
RNAV(GNSS) RWY 27

ATIS NIL	APP NIL		AFIS ARACATI 131.25	GNDC NIL
N/A	FINAL CRS 272°	FAF 1690'	LNAV/VNAV DA / (OCH): 375' / (280')	LNAV MDA / (OCH): 460' (370')

APCH Perdida: Subir para **2700'**. Após **1100'**, curvar à ESQUERDA direto AC273 para espera.

Missed APCH: Climb to **2700'**. After **1100'**, turn LEFT direct to AC273 for holding.

RMK: 1) Para sistemas não compensados Baro-VNAV, LNAV/VNAV NÃO AUTORIZADO abaixo de 5°C ou acima de 48°C.
1) For uncompensated systems Baro-VNAV, LNAV/VNAV NOT AUTHORIZED below 5°C or above 48°C.



RWY27	1.0	2.0	3.0	4.0	AC278
ALT	460	762	1069	1377	1690
(HGT)	370	666	973	1281	1594

KT	090	110	130	150	170	190
FPM	470	570	670	770	880	NA
FAF-MAPT	NA					

STRAIGHT-IN	CAT	A	B	C	D	E
	DA / (OCH)	375' / (280')				
LNAV/VNAV	ALS/NO ALS/ RVR ALS (m)	NIL / 1300 / NIL				
	MDA / (OCH)	460' / (370')				
LNAV	ALS/NO ALS/ RVR ALS (m)	NIL / 1600 / NIL			NIL / 1700 / NIL	
	MDA / (OCH)	NA				
CIRCLING	MDA / (OCH)	NA				
	VIS (m)	NA				

CHANGES IDENT.