

DEPARTURE CHART
INSTRUMENT (SID)

PORTO SEGURO / Porto Seguro (SBPS)

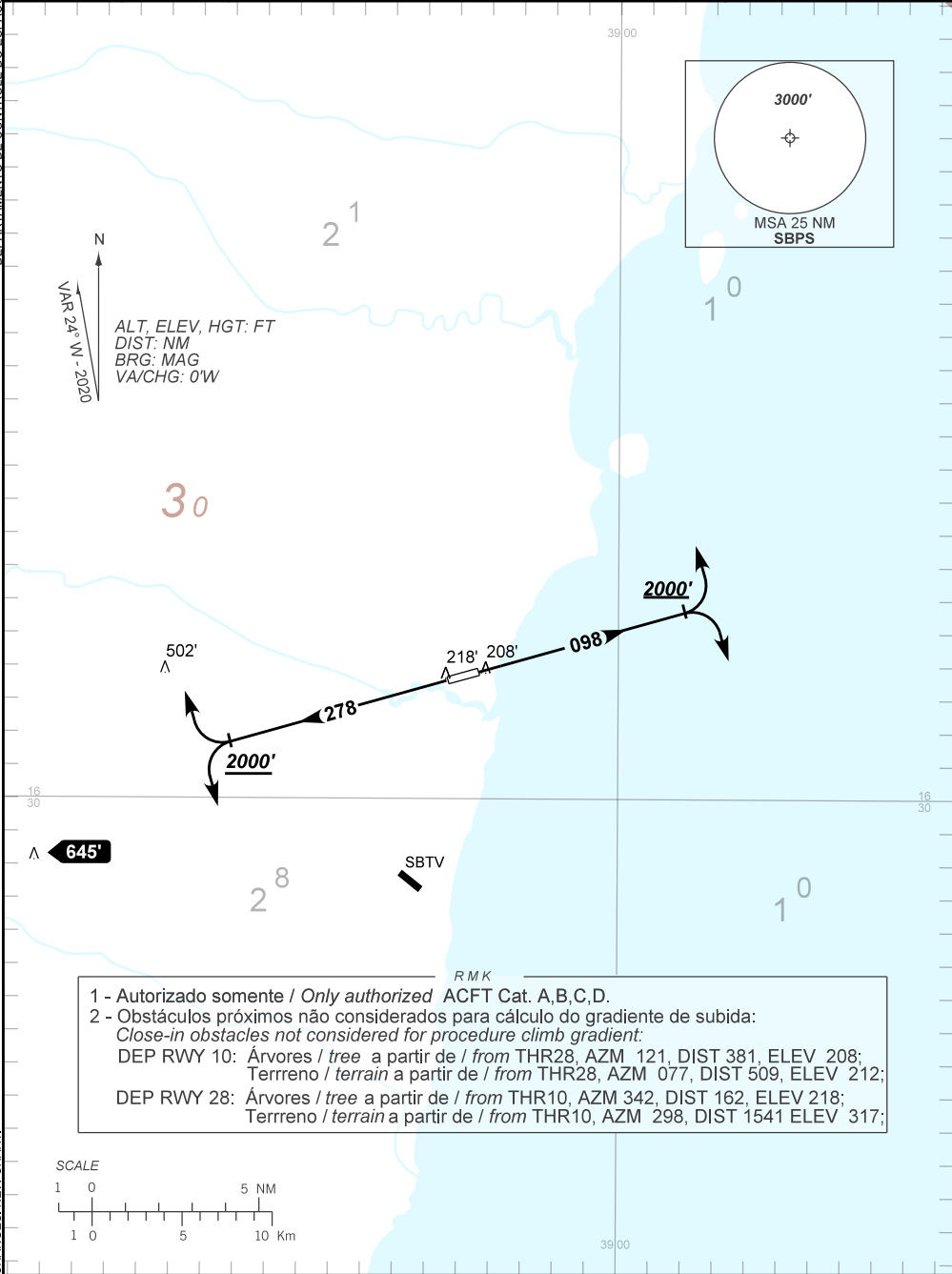
RWY 10 / 28

OMNI

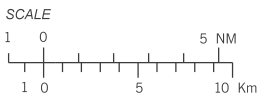
AD ELEV: 169'

TA 4000'	D-ATIS	TWR PORTO SEGURO 118.85	APP PORTO SEGURO 119.60 120.90	ACC RECIFE 125.10 123.80
----------	--------	----------------------------	-----------------------------------	-----------------------------

DEPARTAMENTO DE CONTROLE DO ESPAÇO AÉREO



1 - Autorizado somente / Only authorized ACFT Cat. A,B,C,D.
 2 - Obstáculos próximos não considerados para cálculo do gradiente de subida:
Close-in obstacles not considered for procedure climb gradient:
 DEP RWY 10: Árvores / tree a partir de / from THR28, AZM 121, DIST 381, ELEV 208;
 Terreno / terrain a partir de / from THR28, AZM 077, DIST 509, ELEV 212;
 DEP RWY 28: Árvores / tree a partir de / from THR10, AZM 342, DIST 162, ELEV 218;
 Terreno / terrain a partir de / from THR10, AZM 298, DIST 1541 ELEV 317;



CHANGES: NEW CHART.