

STANDARD DEPARTURE CHART  
INSTRUMENT (SID)

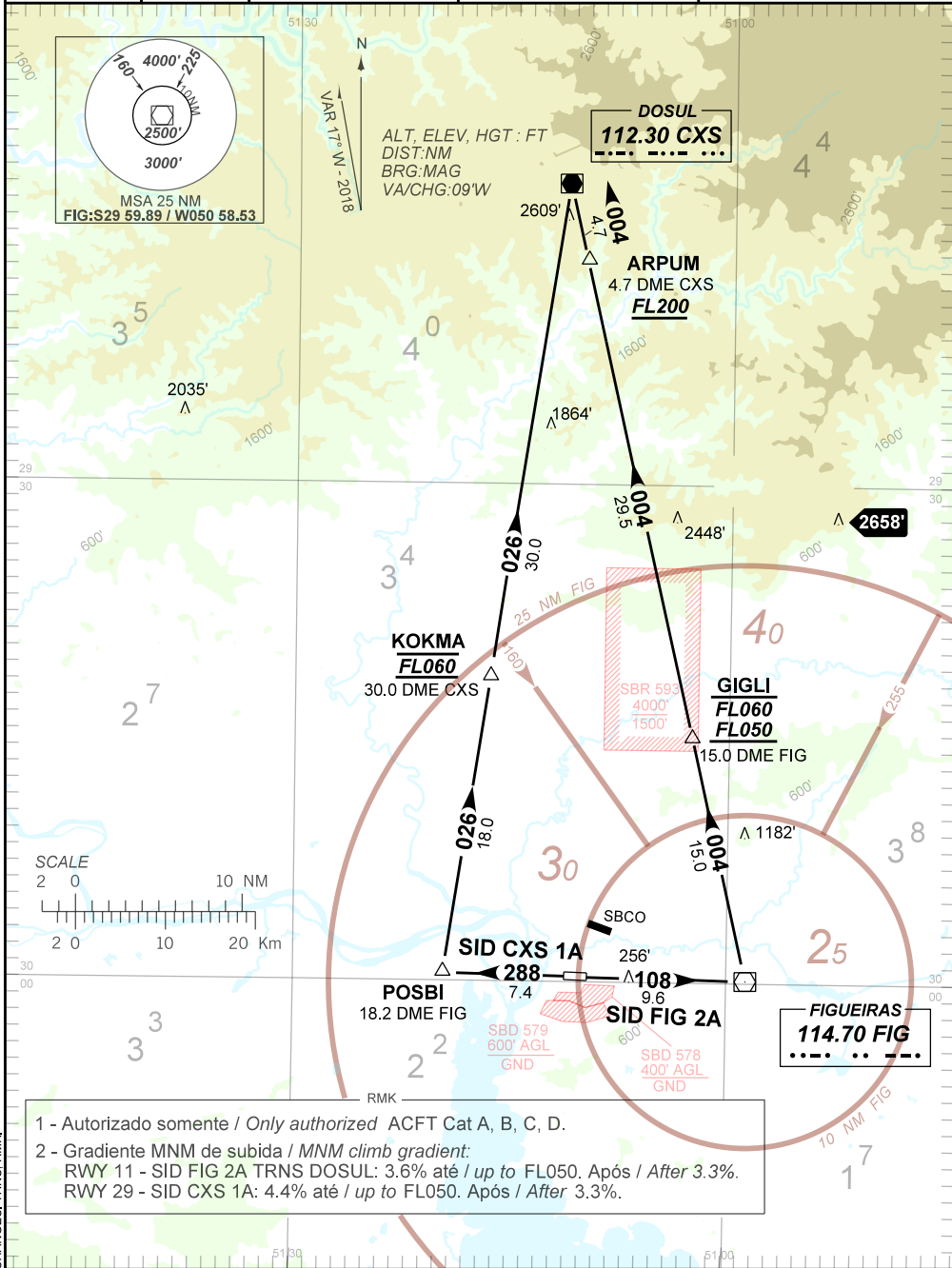
PORTO ALEGRE / Salgado Filho, INTL (SBPA)

RWY 11/29

CXS 1A - FIG 2A

AD ELEV: 12'

TA 4000'	D-ATIS 132.35	TWR PORTO ALEGRE 118.10 121.50	APP PORTO ALEGRE 119.00 120.10 120.55 128.90 121.50	ACC CURITIBA 127.40 126.75 135.85 128.45 121.50
----------	------------------	-----------------------------------	---	---



- 1 - Autorizado somente / Only authorized ACFT Cat A, B, C, D.
- 2 - Gradiente MNM de subida / MNM climb gradient:  
RWY 11 - SID FIG 2A TRNS DOSUL: 3.6% até / up to FL050. Após / After 3.3%.  
RWY 29 - SID CXS 1A: 4.4% até / up to FL050. Após / After 3.3%.

CHANGES: TRNS: RMK

— R M K —

- 3 - Obstáculos próximos não considerados para cálculo do (PDG):  
*Close-in obstacles not considered for procedure gradient (PDG):*  
DEP RWY 11: Árvores / *Trees* : a partir de / *from* THR29, AZM 160, DIST 150m, ELEV 68'.
- 4 - Aeronaves com destino a SBCX: desconsiderar a restrição de nível no fixo ARPUM.  
*Aircraft from SBPA to SBCX: disregard vertical restriction at ARPUM.*