

BELÉM / Val de Cans - Júlio Cezar Ribeiro, INTL (SBBE)  
PA-BRASIL

**IAC - SBBE**

WGS-84

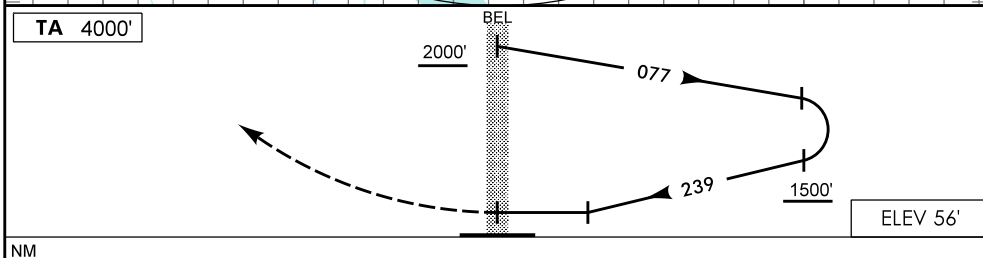
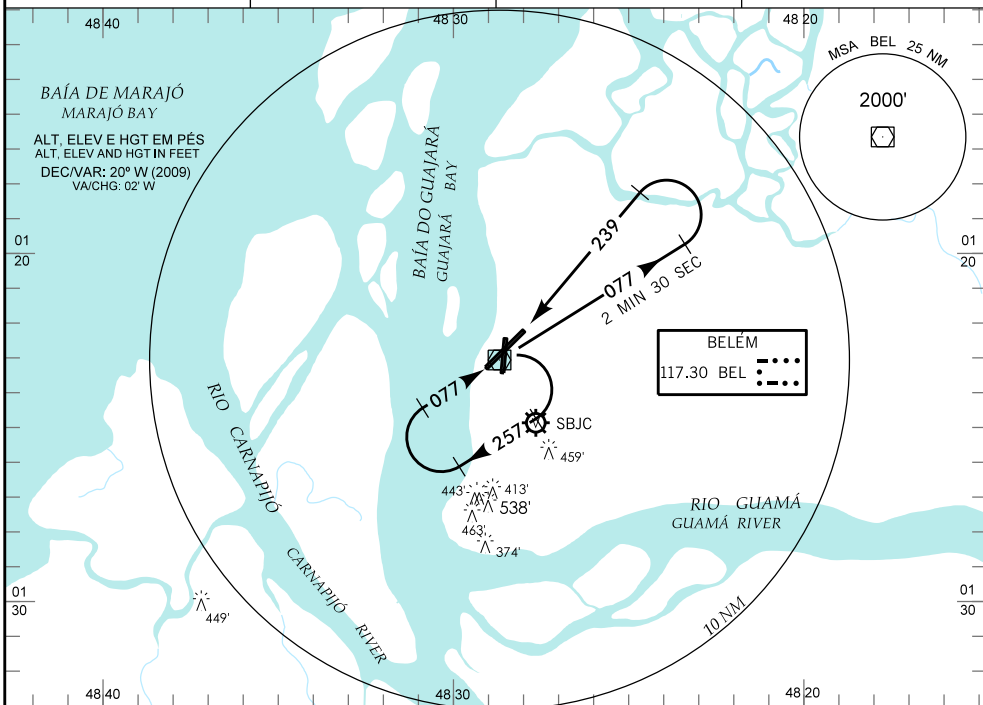
**VOR RWY 24**

D-ATIS  
127.60

APP BELÉM  
119.05 119.50

TWR BELÉM  
118.70

GNDCL BELÉM  
121.90



NM

**APROXIMAÇÃO PERDIDA**  
MISSED APPROACH

SUBIR PARA 2000' NA RDL 239.  
CLIMB TO 2000' ON RDL 239.

**RMK:** LDG RWY 06: CIRCULE SECT NW DO AD.  
LDG RWY 06: CIRCLE NW SECT OF AD.

<b>C</b>	POUSO DIRETO RWY 24	STRAIGHT-IN TO RWY 24	IFR OPS DIURNA / NOTURNA DAY / NIGHT		PARA CIRCULAR TO CIRCLING ( RMK )			
<b>A</b>	VOR							
<b>T</b>	MDA 790'		OCH 740'		CAT	MDA	OCH	VIS
<b>A</b>	VIS			A	790'	740'	1600 M	
<b>B</b>	1600 M			B	790'	740'	1600 M	
<b>C</b>	3400 M			C	890'	840'	4000 M	
<b>D</b>				D	890'	840'	4400 M	
<b>E</b>				E	890'	840'	4800 M	

RAZÃO DE DESCIDA NA APROXIMAÇÃO FINAL RATE OF DESCENT ON FINAL APPROACH										
KT	090	110	130	150	170	190				
FPM	600									

Y:\vfe-map\map\belém-sbbe\bbe\_iac\_vor\_rwy24.dgn

DEPARTAMENTO DE CONTROLE DO ESPAÇO AÉREO - COMAER - BRASIL