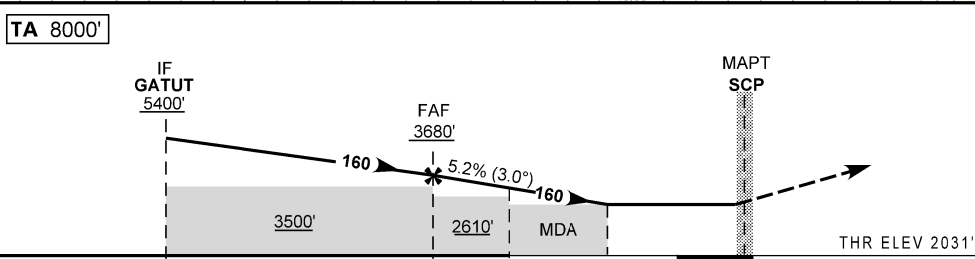
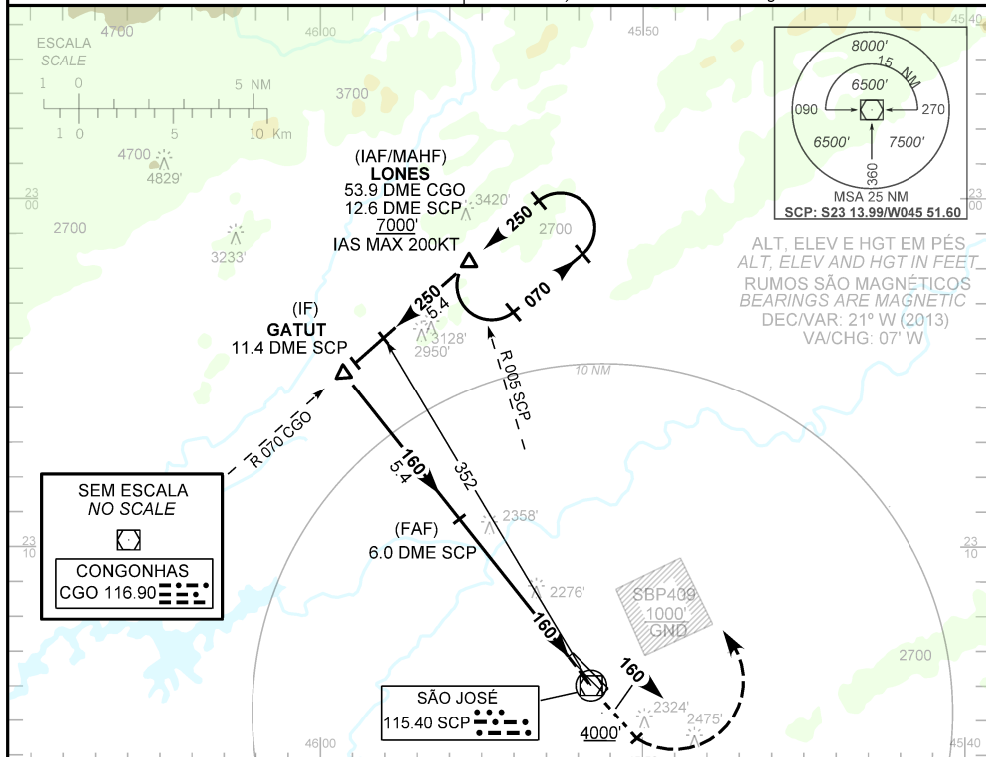


AD ELEV: 2123'	D-ATIS 127.925	APP SÃO PAULO 124.15 134.15 134.90 129.00 120.45 129.05 123.90 125.60 135.25 124.70 121.50	TWR SÃO JOSÉ 118.50 121.50	GNDC SÃO JOSÉ 121.950
----------------	-------------------	--	-------------------------------	--------------------------

RMK: 1) Pouso RWY 33: circular somente pelo setor SW do Aeródromo. 2) IAS MAX na espera 180kt.
 RMK: 1) *Arrival RWY 33: circle SW sector only.* 2) *MAX IAS 180kt at holding.*

Aproximação Perdida: 1) Subir para 7000', gradiente MNM 5%. Manter RDL160 SCP até 4000'. Após, curvar à esquerda, RDL 005 SCP para espera em LONES. 2) IAS MAX 180kt na espera.
 Missed Approach: 1) *Climb to 7000', MNM gradient 5%. Maintain 160 SCP RDL until 4000'. Then, turn left, 005 SCP RDL for holding at LONES.* 2) *MAX IAS 180kt at holding.*



TO THR 15 (NM)	10.4	5.0	3.7	1.4	0.0
TO SCP (DME)	11.4	6.0	4.7	2.4	1.0

FAF	4.0	3.0	2.0	1.4	RWY15	KT	090	110	130	150	170	190
3680	3355	3036	2718	2530	ALT	FPM	500	600	700	800	900	1000
1649	1324	1005	687	499	(HGT)	FAF-MAPT 5NM	3.20	2.44	2.18	2.17	1.46	1.35

POUSO DIRETO STRAIGHT-IN	CAT	A	B	C	D	E
	MDA / OCH	2530 / 500				
VOR	ALS/NL ALS/RVR ALS (m)	1200 / 1600 / NIL		1800 / 2300 / NIL		
CIRCULAR TO CIRCLE	MDA / OCH	2640 / 520		3150 / 1030		3310 / 1190
	VIS (m)	1600		4000		4800

CHANGES: D-ATIS, EAC, ELEV, FREQ, MNM, OPR, RWY.