

**INSTRUMENT APPROACH  
CHART (IAC)**

**RIO BRANCO / Plácido de Castro (SBRB)**

**AD ELEV: 633'**

**VOR Y RWY 06**

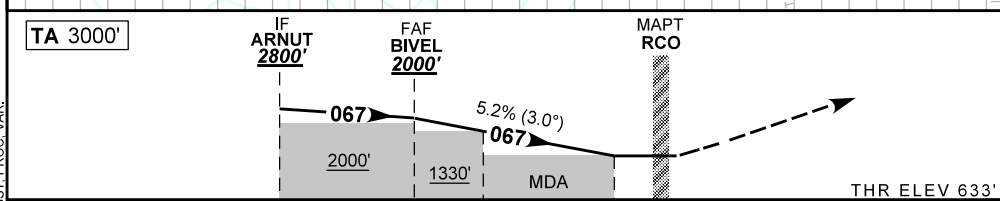
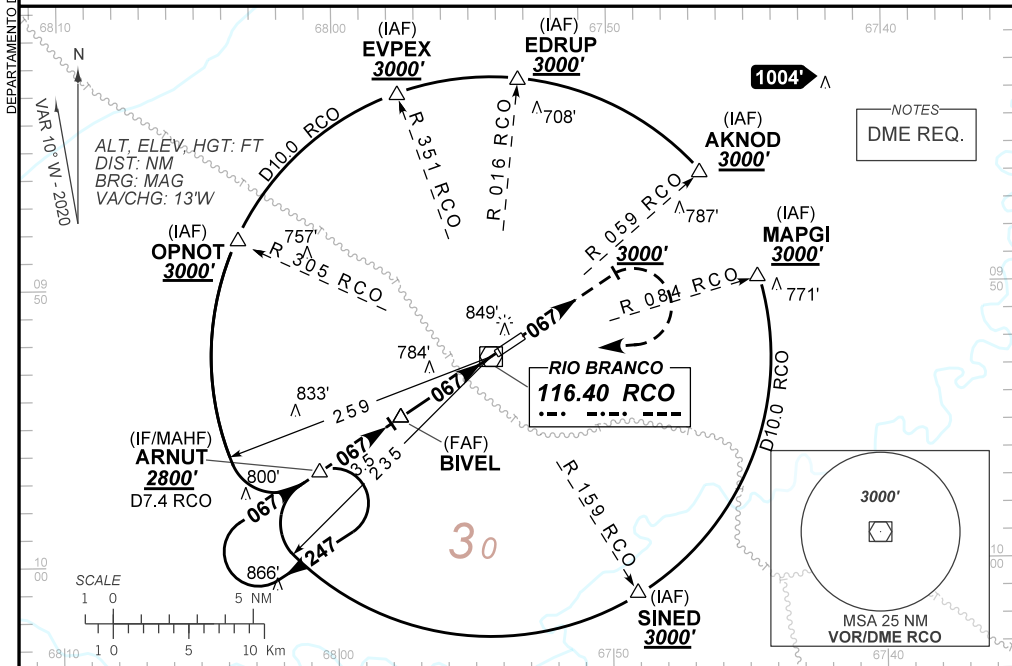
D-ATIS	APP RIO BRANCO <b>119.90</b>	TWR RIO BRANCO <b>118.70</b>	GNDC <b>NIL</b>
--------	---------------------------------	---------------------------------	--------------------

VOR RCO <b>116.40 MHz</b>	FINAL CRS <b>067°</b>	FAF: <b>2000'</b>	N/A	VOR MDA / (OCH): <b>1060' / (430')</b>
------------------------------	--------------------------	----------------------	-----	---

APCH Perdida: Subir para **4000'** na RDL **067** RCO. Após **3000'** curvar à DIREITA DCT RCO. Após, voar para espera em ARNUT.

Missed APCH: Climb to **4000'** on **067** RCO RDL. After, **3000'** turn RIGHT DCT RCO. Then, fly to ARNUT for holding.

RMK: NIL.



TO THR 06 (NM)	7.6	4.1	3.2	1.2	0.0
TO RCO (DME)	7.4	3.9	3.0	1.0	0.2

BIVEL	3.0	2.0	1.2	RWY06		Ground Speed (KT)	090	110	130	150	170	190
2000	1638	1320	1060	ALT		FPM	500	600	700	800	900	NA
1367	1005	687	430	(HGT)		FAF-MAPT	NA					

STRAIGHT-IN	CAT	A	B	C	D	E
	MDA / (OCH)	1060' / (430')				
VOR	ALS/NO ALS/ RVR ALS (m)	800 / 1600 / 700		1300 / 2000 / 1100		
CIRCLING	MDA / (OCH)	NA				
	VIS (m)					

CHANGES: D-ATIS, HDG, LAYOUT, MIN, OPR, OBST, PROC, VAR.