

**INSTRUMENT APPROACH  
CHART (IAC)**

**RIO DE JANEIRO / Galeão - Antônio Carlos Jobim, INTL (SBGL)**

**AD ELEV: 28'**

**RNAV(GNSS) Y RWY 28**

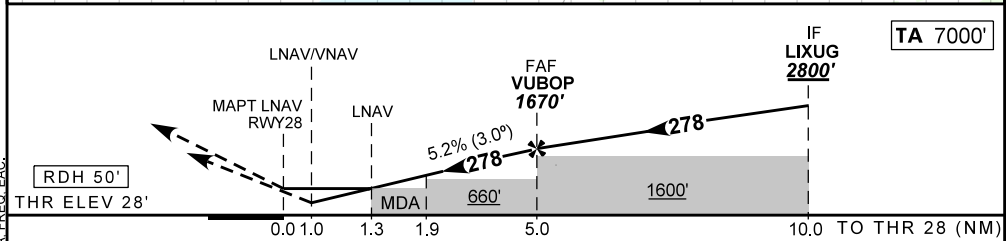
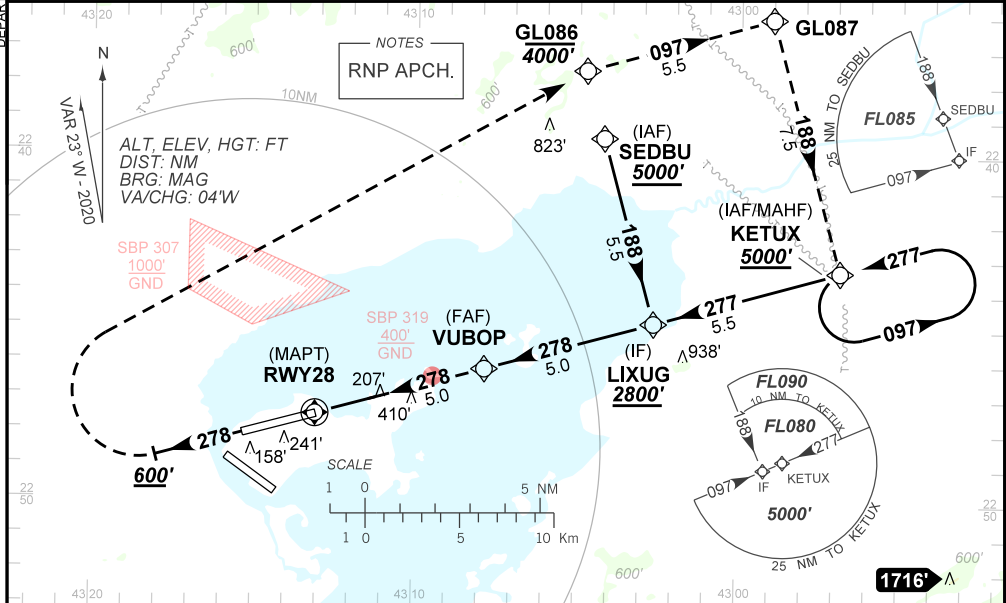
D-ATIS <b>127.60</b>	APP RIO <b>128.90 119.35 119.00 120.55 129.80 134.40 121.25 124.95 134.95 125.95</b>	TWR GALEÃO <b>118.00 118.20</b>	GNDC GALEÃO <b>128.35 121.65</b>
-------------------------	---	------------------------------------	-------------------------------------

TEMP LNAV/VNAV <b>MIN 0 °C / MAX 48 °C</b>	FINAL CRS <b>278°</b>	FAF: <b>1670'</b>	LNAV/VNAV DA / (OCH): <b>409' / (381')</b>	LNAV MDA / (OCH): <b>490' / (470')</b>
---	--------------------------	----------------------	---	---

**APCH Perdida:** 1) Subir para **4000'**. Manter proa **278** até **600'**. Após, curvar à DIREITA direto GL086. Após, subir para **5000'**, curvando à DIREITA no rumo **097** até GL087. Após, curva à DIREITA no rumo **188** até KETUX para espera. 2) IAS MAX 210KT.

**Missed APCH:** 1) Climb to **4000'**. Maintain heading **278** until **600'**. After, turn RIGHT direct to GL086. After, climb to **5000'**, turning RIGHT course **097** until GL087. After, turn RIGHT course **188** until KETUX for holding. 2) IAS MAX 210KT

**RMK: NIL.**



RWY28	1.0	1.3	1.9	3.0	4.0	VUBOP	Ground Speed (KT)	090	110	130	150	170	190
ALT	409	490	683	1033	1352	1670	FPM	500	600	700	800	900	NA
(HGT)	381	470	655	1005	1324	1642	FAF-MAPT	NA					

STRAIGHT-IN	CAT	A	B	C	D	E
LNAV/VNAV	DA / (OCH)	409' / (381')				NA
	ALS/NO ALS/ RVR ALS (m)	1400 / 1800 / NIL				
LNAV	MDA / (OCH)	490' / (470')				
	ALS/NO ALS/ RVR ALS (m)	1400 / 1800 / NIL		1800 / 2200 / NIL		
CIRCLING	MDA / (OCH)	NA				
	VIS (m)	NA				

AIRAC AMDT 2013A1 03 DEC 20

SBGL\_IAC\_00R 1/1  
IAC RNAV (GNSS) Y RWY 28

DEPARTAMENTO DE CONTROLE DO ESPAÇO AEREO

CHANGES: DECVAR, LAYOUT, PROC, TAA, FREQ, EAC.