

**IAC - SBNM**

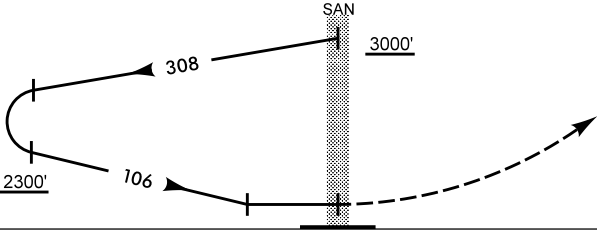
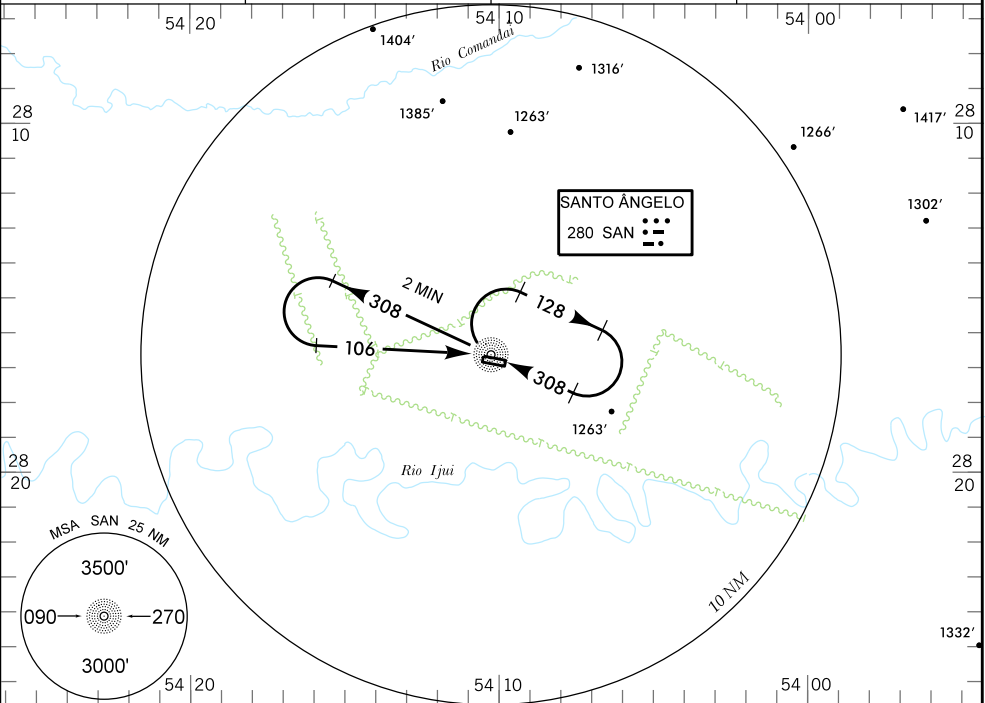
WGS-84

ATIS  
NIL

APP  
NIL

AFIS SANTO ÂNGELO  
131.65

GNDC  
NIL



**TA 4000'**

**ELEV 1056'**

NM

**APROXIMAÇÃO PERDIDA** SUBIR PARA 3000' NO QDR 106.

**RMK:** NIL

<b>C</b>	POUSO DIRETO RWY 12	IFR OPS DIURNA / NOTURNA	PARA CIRCULAR			
	NDB					
<b>A</b>						
<b>T</b>	<b>MDA 1600'</b>	<b>OCH 580'</b>				
	VIS					
<b>A</b>			CAT	MDA	OCH	VIS
<b>B</b>	1600 M		A	1600'	580'	1600 M
<b>C</b>	2400 M		B			
<b>D</b>			C	2400 M		
<b>E</b>	NA		D	NA		
<b>E</b>			E	NA		

RAZÃO DE DESCIDA NA APROXIMAÇÃO FINAL												
KT	090	110	120	130	140	160						
FPM	600											

MODIFICAÇÕES: RWY.