

**INSTRUMENT APPROACH
CHART (IAC)**

RIO DE JANEIRO / Galeão - Antônio Carlos Jobim, INTL (SBGL)

VOR RWY 33

AD ELEV: 28'

D-ATIS 127.60	APP RIO 128.90 119.35 129.80 125.95 119.725 132.975 134.40 121.25 134.95 124.95	TWR GALEÃO 118.00 118.20	GNDC GALEÃO 121.65 128.35
-------------------------	---	------------------------------------	-------------------------------------

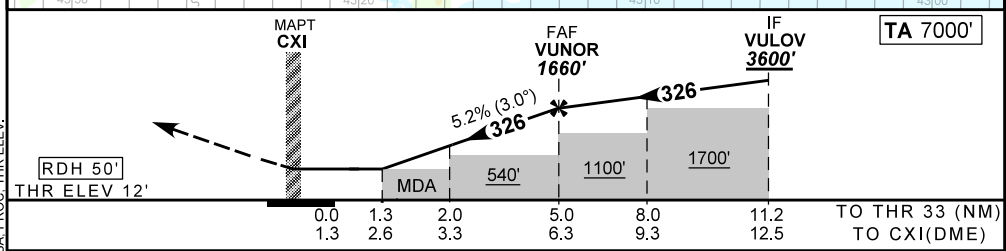
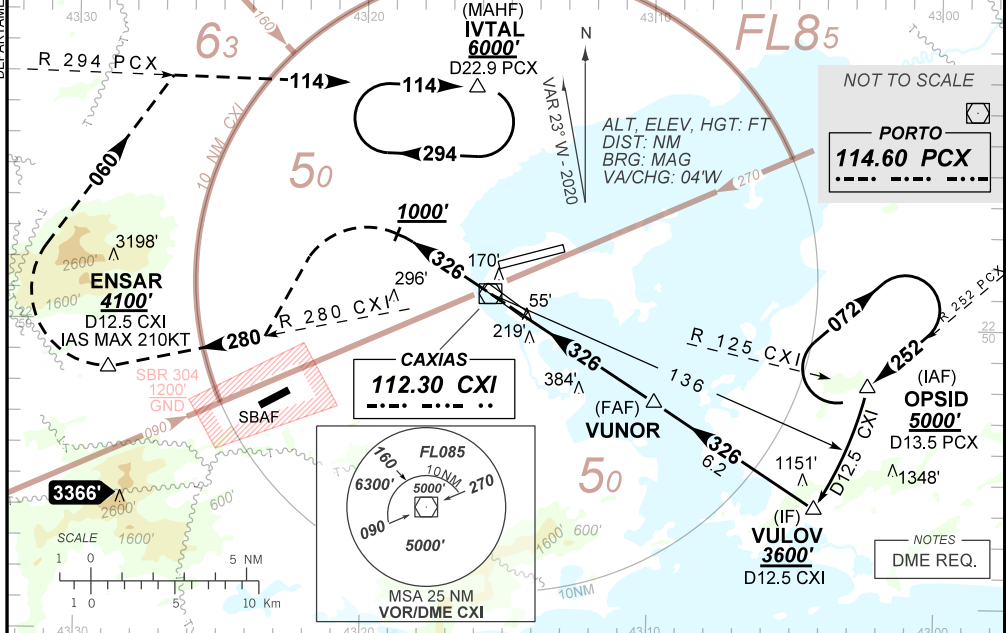
VOR CXI 112.30 MHz	FINAL CRS 326°	FAF: 1660'	N/A	VOR MDA / (OCH): 470' / (460')
------------------------------	--------------------------	----------------------	-----	--

APCH Perda: 1) Subir para **6000'**, gradiente MNM 4.5%. Manter proa **326** até cruzar **1000'**. Após, curvar a ESQUERDA para interceptar RDL **280** do VOR CXI até ENSAR. Então, curvar a DIREITA, na proa **060** para interceptar RDL **294** do VOR PCX até IVTAL para espera. 2) IAS MAX 210KT até ENSAR.

Missed APCH: 1) Climb to **6000'**, MNM gradient 4.5%. Maintain heading **326** until passing **1000'**. After, turn LEFT to intercept **280** RDL CXI VOR up to ENSAR. Then, turn RIGHT, heading **060** to intercept **294** RDL PCX VOR up to IVTAL for holding. 2) IAS MAX 210KT until ENSAR.

RMK: NIL

DEPARTAMENTO DE CONTROLE DO ESPAÇO AÉREO



RWY33	1.3	2.0	3.0	4.0	VUNOR	Ground Speed (KT)	090	110	130	150	170	190
ALT	470	705	1017	1336	1660	FPM	500	600	700	800	900	1000
(HGT)	460	693	1005	1324	1648	FAF-MAPT	NA					

STRAIGHT-IN	CAT	A	B	C	D	E
	VOR	MDA / (OCH)	470' / (460')			
	Missed APCH Climb Gradient	4.5%	NIL / 1600 / NIL		NIL / 2100 / NIL	
CIRCLING	MDA / (OCH)	NA				
	VIS (m)	NA				

CHANGES: DECAVAR, FREQ, LAYOUT, MSA, PROC, THR, ELEV.