

DEPARTURE CHART
INSTRUMENT (SID)

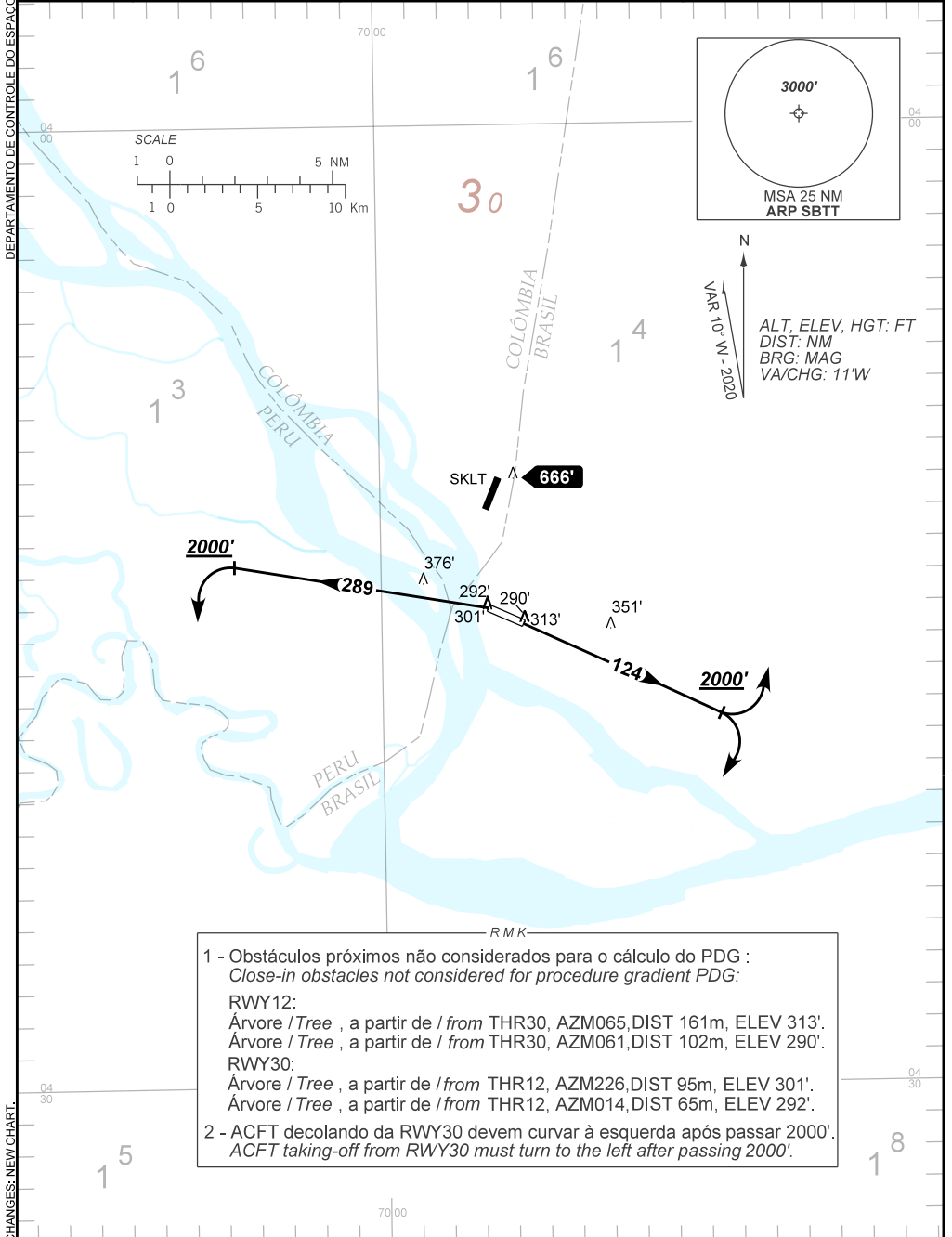
TABATINGA / Tabatinga, INTL (SBTT)

RWY 12/30

OMNI

AD ELEV: 263'

TA 18000'	AFIS TABATINGA 125.90	APP AMAZONAS 119.10 128.60	ACC AMAZÔNICO 134.15 124.55
-----------	--------------------------	-------------------------------	--------------------------------



1 - Obstáculos próximos não considerados para o cálculo do PDG :
Close-in obstacles not considered for procedure gradient PDG:

RWY12:
Árvore / Tree , a partir de / from THR30, AZM065, DIST 161m, ELEV 313'.
Árvore / Tree , a partir de / from THR30, AZM061, DIST 102m, ELEV 290'.

RWY30:
Árvore / Tree , a partir de / from THR12, AZM226, DIST 95m, ELEV 301'.
Árvore / Tree , a partir de / from THR12, AZM014, DIST 65m, ELEV 292'.

2 - ACFT decolando da RWY30 devem curvar à esquerda após passar 2000'.
ACFT taking-off from RWY30 must turn to the left after passing 2000'.

CHANGES: NEW CHART.