

**IAC - SBMN**

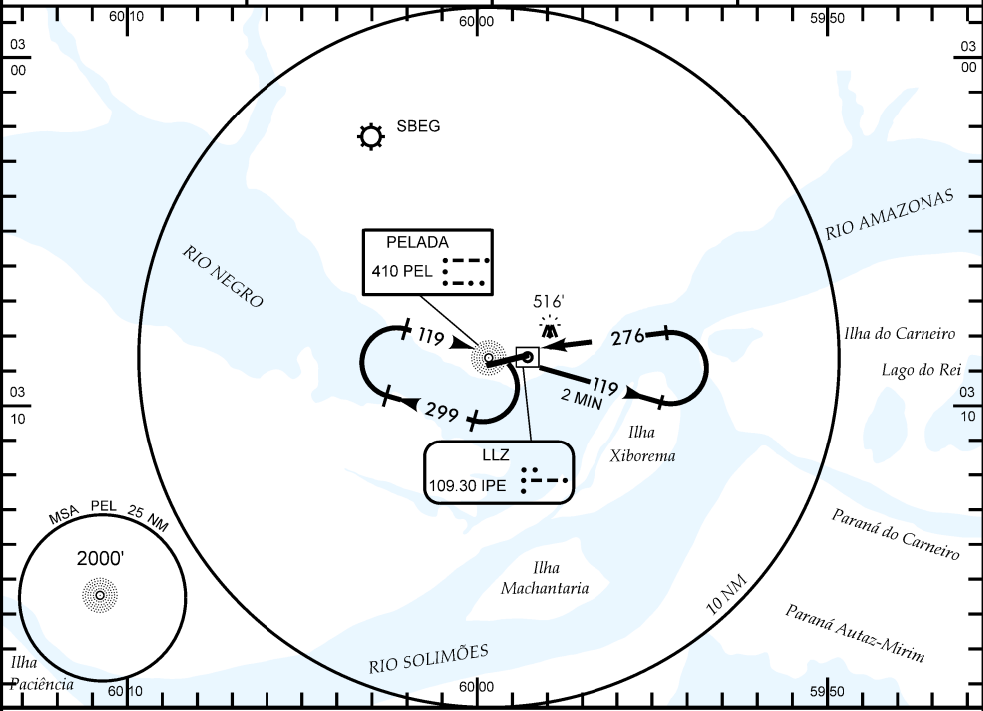
WCS-84

ATIS  
NIL

APP MANAUS  
119.25 119.70 120.40

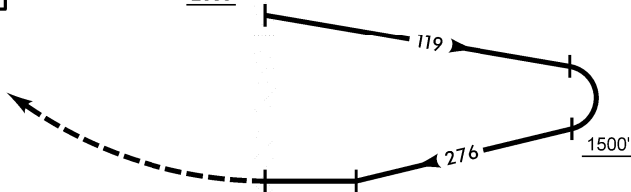
TWR MANAUS  
118.60

GND C  
NIL



TA 5000'

2000' PEL



ELEV 267'

NM

**APROXIMAÇÃO PERDIDA** SUBIR PARA 2000' NO QDR 276.

RMK	POUSO DIRETO RWY 27				IFR OPS		DIURNA / NOTURNA		PARA CIRCULAR (VER RMK)			
A	MDA 830'				OCH 570'							
T	VIS								CAT	MDA	OCH	VIS
A	1600 M								A	830'	570'	1600 M
B									B			
C									C			2800 M
D	2600 M								D	880'	620'	3200 M
E									E			3600 M
RAZÃO DE DESCIDA NA APROXIMAÇÃO FINAL												
KT	90	110	130	150	170	190						
FPM	700											

CHANGES: ATIS, FREQ., IDENT., MINM OPR., OCH.

DEPARTAMENTO DE CONTROLE DO ESPAÇO AÉREO - COMAER - BRASIL