

**INSTRUMENT APPROACH
CHART (IAC)**

**PORTO ALEGRE / Salgado Filho, INTL (SBPA)
RNAV (GNSS) RWY 28**

AD ELEV: 12'

THR 29 DISPLACED 300m

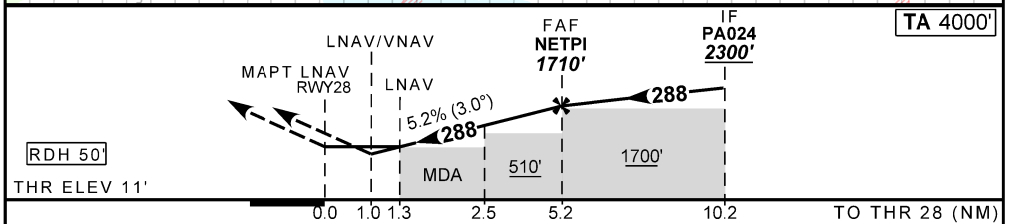
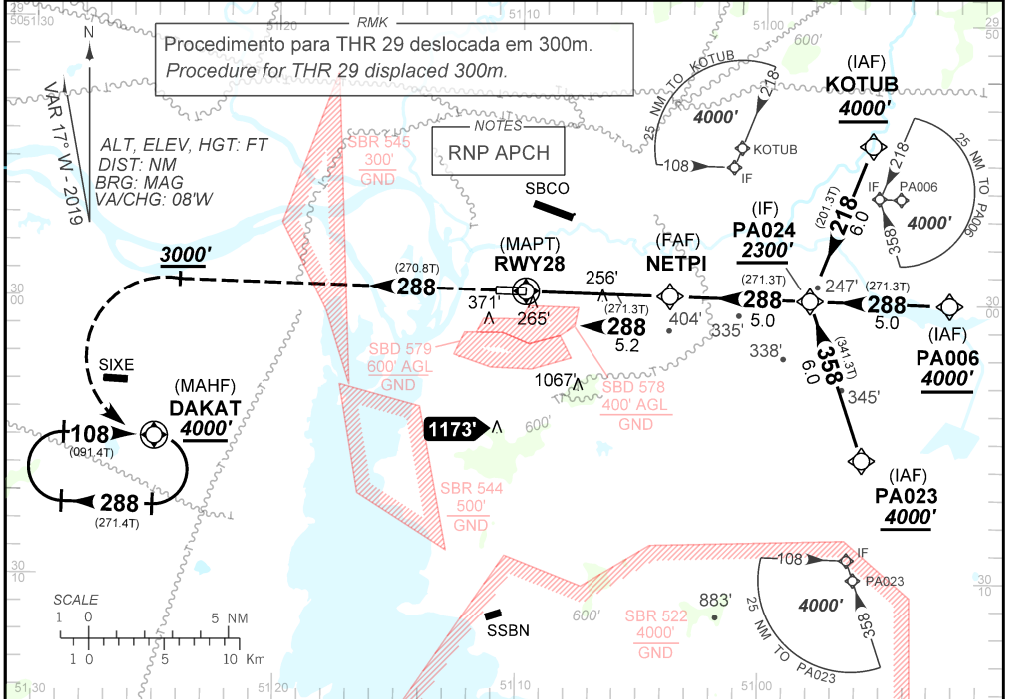
| | | | |
|-------------------------|--|---|---|
| D-ATIS 132.35 | APP PALEGRE 119.00 120.10 120.55 128.90 121.50 | TWR PALEGRE 118.10 121.50 | GNDC PALEGRE 121.90 |
| N/A | FINAL CRS 288° | FAF 1710' | LNAV/VNAV DA / (OCH): 387' / (376') |
| | | LNAV MDA / (OCH): 460' / (450') | |

APCH Perdida: Subir para **4000'** no rumo **288**. Após **3000'**, curvar a ESQUERDA direto DAKAT para espera.
IAS MAX 230KT.

Missed APCH: Climb to **4000'** on course **288**. After **3000'**, turn LEFT direct to DAKAT for holding.

MAX IAS 230 KT.

RMK: 1) Para sistemas BARO-VNAV não compensados, procedimento LNAV/VNAV não autorizado abaixo de -10°C. 1) For uncompensated systems, LNAV/VNAV procedure not authorized below -10°C.



| | | | | | | | | | | | |
|-------|-----|-----|------|------|-------|--|--|--|--|--|--|
| RWY28 | 1.3 | 2.5 | 3.0 | 4.0 | NETPI | | | | | | |
| ALT | 460 | 857 | 1016 | 1334 | 1710 | | | | | | |
| (HGT) | 450 | 845 | 1004 | 1322 | 1698 | | | | | | |

| | | | | | | |
|----------|-----|-----|-----|-----|-----|-----|
| KT | 090 | 110 | 130 | 150 | 170 | 190 |
| FPM | 500 | 600 | 700 | 800 | 900 | NA |
| FAF-MAPT | NA | | | | | |

| | | | | | | |
|-------------|-------------------------|------------------|---|------------------|---|----|
| STRAIGHT-IN | CAT | A | B | C | D | E |
| LNAV/VNAV | DA / (OCH) | 387' / (376') | | | | NA |
| | ALS/NO ALS/ RVR ALS (m) | NIL / 1700 / NIL | | | | |
| LNAV | MDA / (OCH) | 460' / (450') | | | | |
| | ALS/NO ALS/ RVR ALS (m) | NIL / 1600 / NIL | | NIL / 2100 / NIL | | |
| CIRCLING | MDA / (OCH) | NA | | | | |
| | VIS (m) | | | | | |

AMDT 2009C 13 AUG 20

DEPARTAMENTO DE CONTROLE DO ESPAÇO AÉREO

SBPA_IAC_01K 1/1

IAC RNAV (GNSS) RWY 28 (THR 29 DISPLACED 300m)

CHANGES: NEW CHART