

**INSTRUMENT APPROACH
CHART (IAC)**

**SÃO PAULO / Congonhas (SBSP)
RNP RWY 17R (AR)**

AD ELEV: 2631'

CAT (A, B, C)

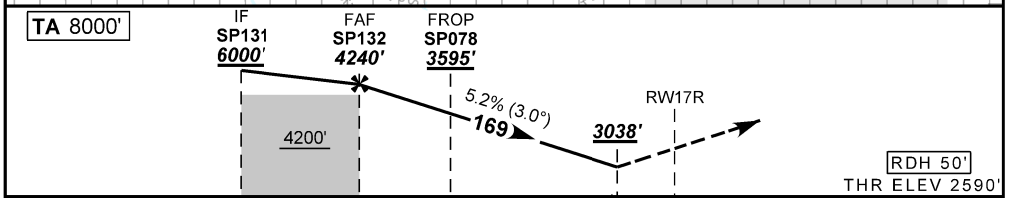
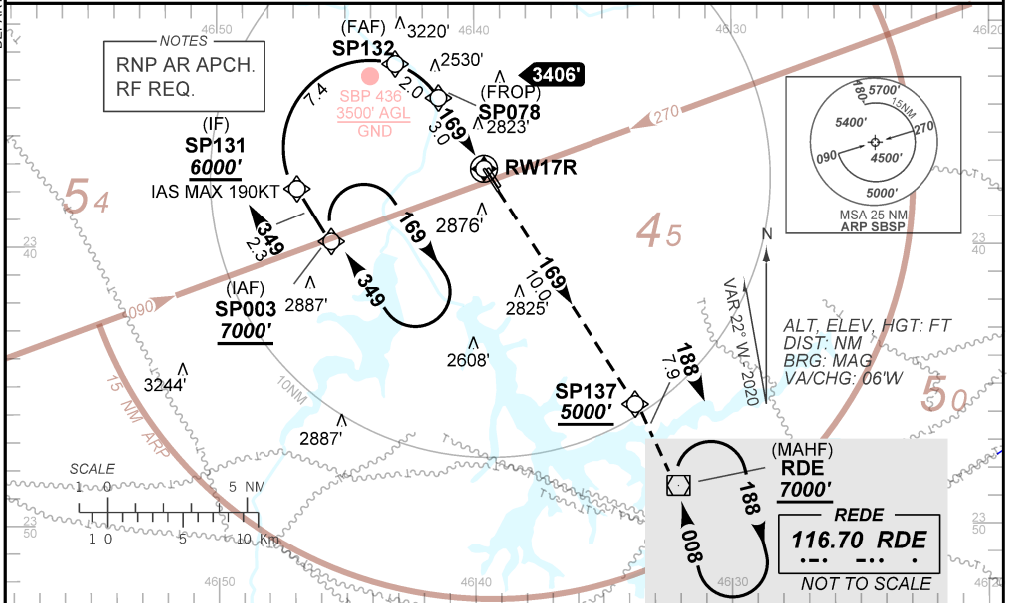
D-ATIS 127.65	APP SÃO PAULO 129.75 119.15 120.45 120.85 133.85	TWR SÃO PAULO 118.05 127.15	GNDC SÃO PAULO 121.90
-------------------------	--	---------------------------------------	---------------------------------

TEMP LNAV/VNAV MIN -10°C / MAX 46°C	FINAL CRS 169°	FAF: 4220'	RNP 0.3 DA / (OCH): 3038' / (448')	N/A
---	--------------------------	----------------------	--	------------

APCH Perdida: 1) Subir para **7000'**. Manter rumo **169** até SP137. Após, curvar à DIREITA rumo **188** até VOR RDE para espera.

Missed APCH: 1) Climb to **7000'**. Maintain course **169** until SP137. After, turn RIGHT course **188** until RDE VOR for holding.

RMK: NIL.



TO THR 17R (NM)	12.4	5.0	3.0	1.3	0.0
-----------------	------	-----	-----	-----	-----

	SP132	4.0	SP078	2.0	1.3	RWY17R	Ground Speed (KT)	90	110	130	150	170	190
	4240	3914	3595	3277	3038	ALT	FPM	500	600	700	800	NIL	
	1650	1324	1005	687	448	(HGT)	FAF-MAPT	NA					

STRAIGHT-IN	CAT	A	B	C	D	E	
	DA / (OCH)	3038' / (448')				NA	
RNP 0.3	ALS/NO ALS/ RVR ALS (m)	1400 / 2100 / NIL				NA	

**AUTORIZAÇÃO ESPECIAL PARA AERONAVE E TRIPULAÇÃO REQUERIDA
SPECIAL AUTHORIZATION FOR AIRCRAFT AND CREW REQUIRED**

Aprovação Específica
(ANAC IS 91.001)
Specific Approval
(ANAC IS 91.001)

DEPARTAMENTO DE CONTROLE DO ESPAÇO AÉREO

CHANGES: NEW CHART