

DEPARTURE CHART
INSTRUMENT (SID)

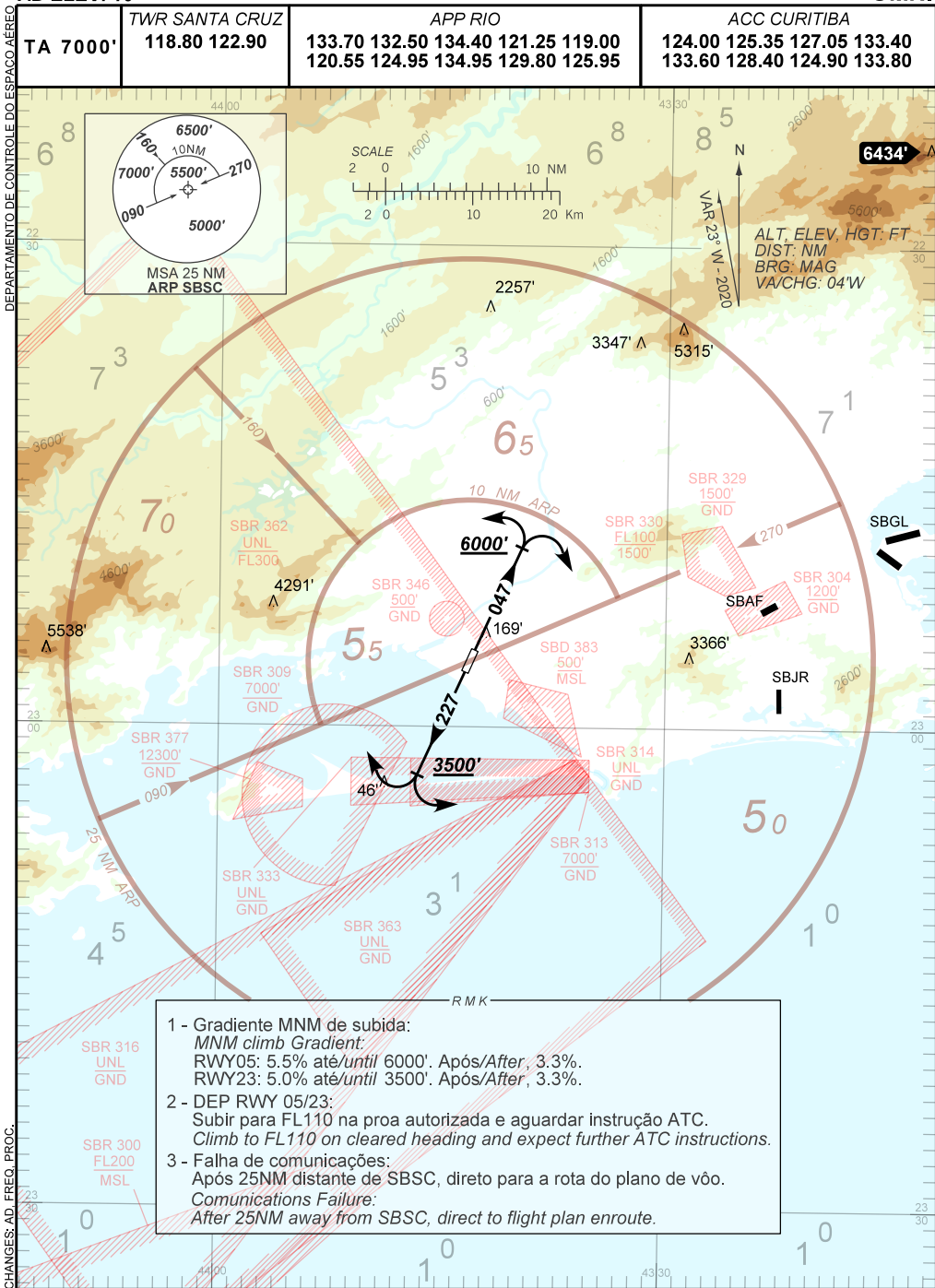
RIO DE JANEIRO / Santa Cruz, MIL (SBSC)

RWY 05/23

OMNI

AD ELEV: 10'

TA 7000'	TWR SANTA CRUZ 118.80 122.90	APP RIO				ACC CURITIBA				
		133.70	132.50	134.40	121.25	119.00	124.00	125.35	127.05	133.40
		120.55	124.95	134.95	129.80	125.95	133.60	128.40	124.90	133.80



- 1 - Gradiente MNM de subida:
MNM climb Gradient:
RWY05: 5.5% até/until 6000'. Após/After, 3.3%.
RWY23: 5.0% até/until 3500'. Após/After, 3.3%.
- 2 - DEP RWY 05/23:
Subir para FL110 na proa autorizada e aguardar instrução ATC.
Climb to FL110 on cleared heading and expect further ATC instructions.
- 3 - Falha de comunicações:
Após 25NM distante de SBSC, direto para a rota do plano de voo.
Communications Failure:
After 25NM away from SBSC, direct to flight plan enroute.

CHANGES: AD, FREQ, PROC.