

**INSTRUMENT APPROACH  
CHART (IAC)**

**RIO DE JANEIRO / Jacarepaguá - Roberto Marinho (SBJR)**

**RNAV(GNSS) 026**

**PINS - (CAT H)**

**AD ELEV: 10'**

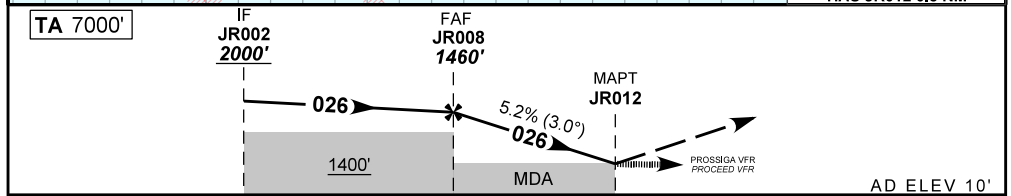
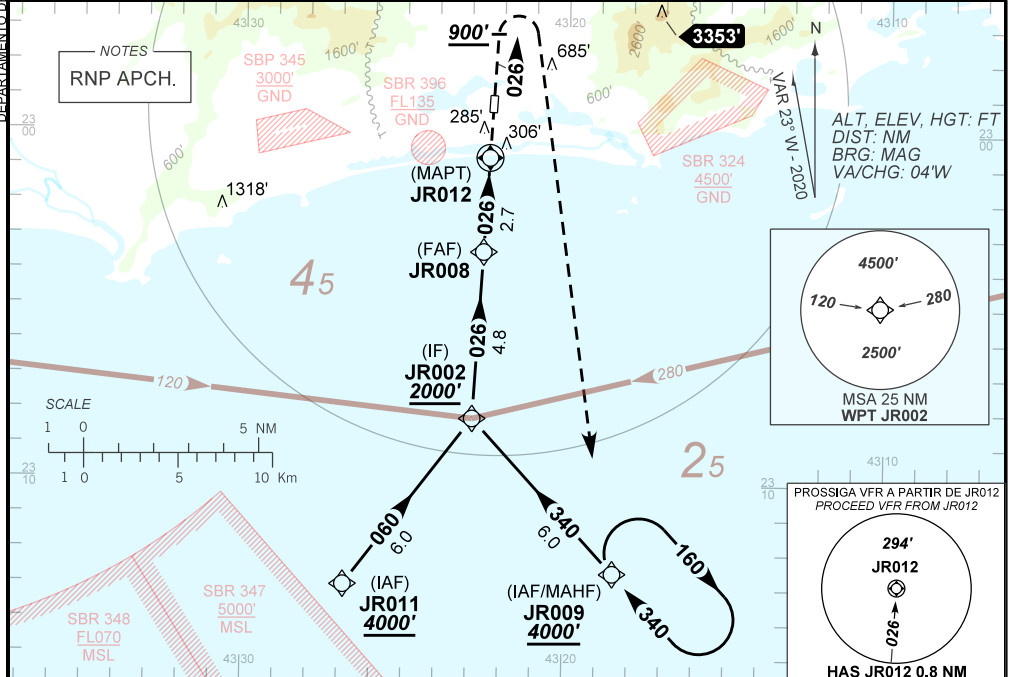
ATIS NIL	119.00 129.20	119.35 120.55	APP RIO 126.20 133.30	128.90 135.60	TWR JACAREPAGUÁ 118.40	GNDC JACAREPAGUÁ 121.60
-------------	------------------	------------------	-----------------------------	------------------	---------------------------	----------------------------

N/A	FINAL CRS 026°	FAF: 1460'	LNAV MDA / (OCH): 600' / (590')	N/A
-----	-------------------	---------------	------------------------------------	-----

APCH Perdida: Subir para **4000'**. Manter proa **026** até **900'**. Após, curvar à DIREITA direto JR009 para espera.

Missed APCH: Climb to **4000'**. Maintain heading **026** until **900'**. After, turn RIGHT direct JR009 for holding.

RMK: 1) Informações complementares no verso.  
See reverse side for additional information.



TO MAPT (NM)	7.5	2.7	0.0
TO THR 03 (NM)	8.8	4.0	1.3

	JR008	2.0	1.0	0.0	MAPT	Ground Speed (KT)	060	070	080	090	100
		1460	1237	919	600	ALT	400	400	500	500	NA
		1450	1227	909	590	(HGT)	FAF-MAPT		NA		

STRAIGHT-IN	CAT	H
	MDA / (OCH)	600' / (590')
LNAV	VIS (m)	1500
CIRCLING	MDA / (OCH)	NA
	VIS (m)	

DEPARTAMENTO DE CONTROLE DO ESPAÇO AÉREO

— R M K —

- 2 - Requerida autorização do APP-RIO para início do procedimento.  
*Authorization required from APP-RIO to initiate the procedure.*
- 3 - Requerido FPL "Y" com mudança de regras de voo para VFR em JR012.  
*FPL "Y" required with flight rules change to VFR at JR012.*
- 4 - Procedimento exclusivo para helicópteros e utilizável somente quando as condições meteorológicas estejam abaixo de VFR para asa fixa.  
*Exclusive procedure for helicopters and usable only when weather conditions are below VFR for fixed wing.*

DEPARTAMENTO DE CONTROLE DO ESPAÇO AÉREO

CHANGES: NEW CHART.