

**INSTRUMENT APPROACH
CHART (IAC)**

RIO BRANCO / Plácido de Castro (SBRB)

AD ELEV: 633'

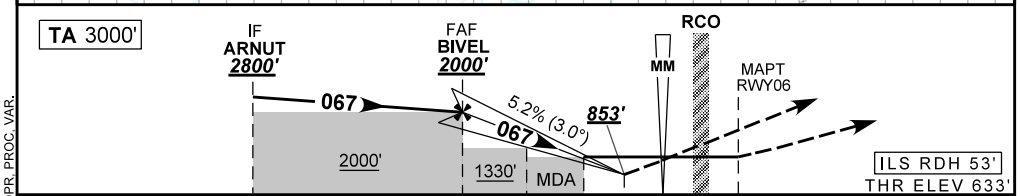
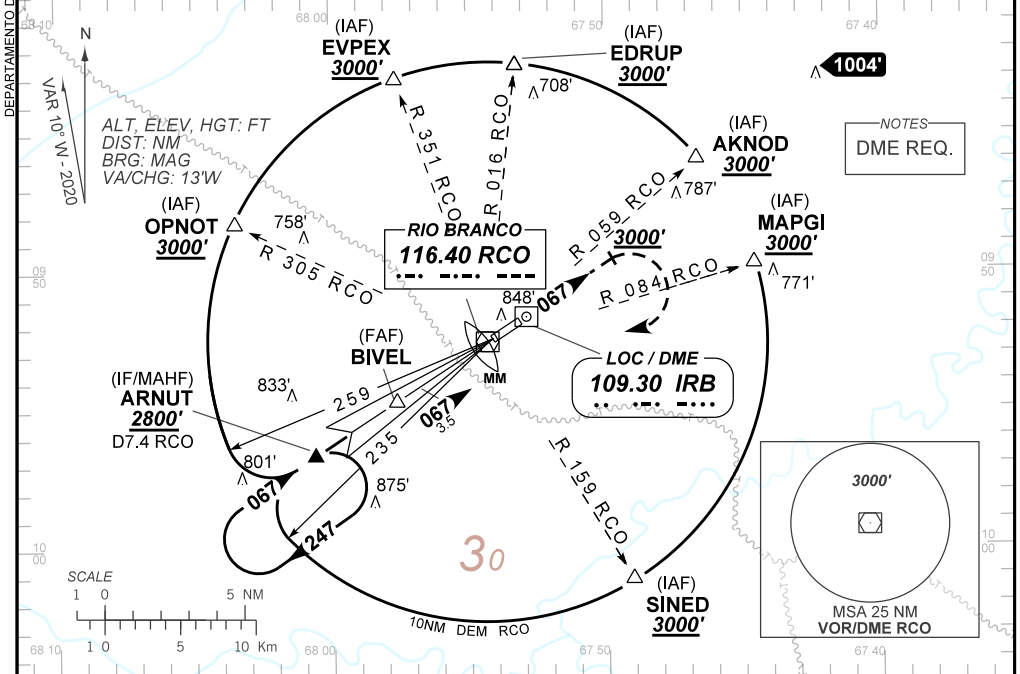
ILS Y or LOC Y RWY 06

D-ATIS		APP RIO BRANCO 119.90		TWR RIO BRANCO 118.70	GNDC NIL
LOC IRB 109.30 MHz	FINAL CRS 067°	FAF: 2000'	CAT I DA / (OCH): 853' / (220')	LOC MDA / (OCH): 1010' / (380')	

APCH Perdida: Subir para **4000'** no rumo **067°**, após **3000'** curvar à DIREITA DCT RCO. Após, voar para espera em ARNUT.

Missed APCH: Climb to **4000'** on course **067°**. After, **3000'** turn RIGHT RCO. Then, fly to ARNUT for holding.

RMK: (*)VIS RVR ALS 550m para APCH utilizando Diretor de Voo, Piloto Automático ou Head-Up Display(HUD).
(*)VIS RVR ALS 550m for APCH using a Flight Director, Autopilot or Head-Up Display (HUD).



TO THR 06 (NM)	7.6	4.1	3.2	1.0	0.7	0.5	0.2	0.0
TO IRB (DME)	9.0	5.5	4.6	2.4	2.1	1.9	1.6	1.4

BIVEL	3.0	2.0	1.0	0.7	RWY06
2000	1641	1323	1010	853	ALT
1367	1008	690	380	220	(HGT)

Ground Speed (KT)	090	110	130	150	170	190
FPM	500	600	700	800	900	1000
FAF-MAPT	NA					

STRAIGHT-IN	CAT	A	B	C	D	E
CAT I	DA / (OCH)	853' / (220')				
	ALS/NO ALS/ RVR ALS (m)	800 / 1200 / 700(*)				
LOC	MDA / (OCH)	1010' / (380')				
	ALS/NO ALS/ RVR ALS (m)	800 / 1600 / 700		1000 / 1700 / 1000		
CIRCLING	MDA / (OCH)	NA				
	VIS (m)	NA				

CHANGES: D-ATIS, FREQ., HDG, LAYOUT, MINM OPR, PROC, VAR.

DEPARTAMENTO DE CONTROLE DO ESPAÇO AÉREO