

**INSTRUMENT APPROACH  
CHART (IAC)**

**CAMPOS DOS GOYTACAZES / Bartolomeu Lisandro (SBCP)**

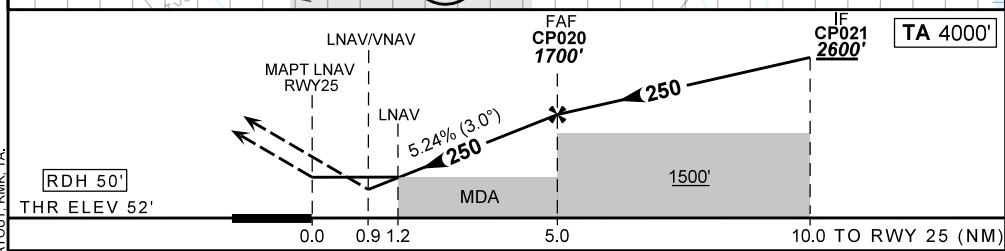
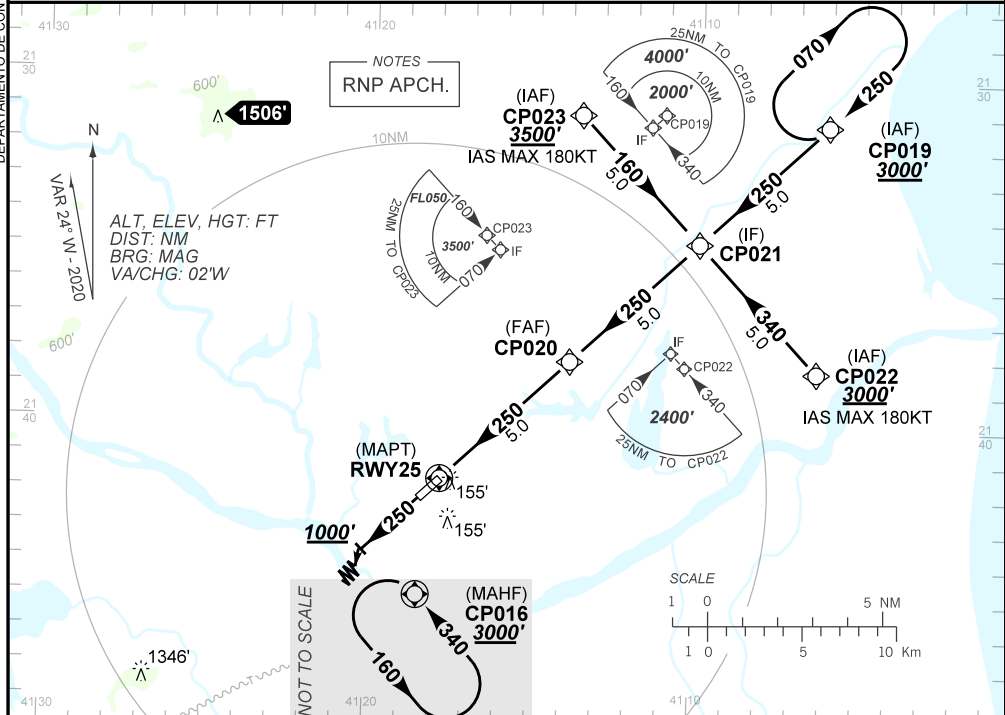
**RNP Z RWY 25**

**AD ELEV: 57'**

ATIS <b>NIL</b>	APP MACAÉ <b>119.20 120.00 129.30</b>	AFIS CAMPOS <b>125.70</b>	GND C <b>NIL</b>
TEMP LNAV/VNAV <b>MIN 0°C / MAX 50°C</b>	FINAL CRS <b>250°</b>	FAF: <b>1700'</b>	LNAV/VNAV DA / (OCH): <b>401' / (349')</b>
LNAV MDA / (OCH): <b>500' / (450')</b>		LNAV	

APCH Perdida: Subir para **3000'**. Manter proa **250** até **1000'**. Após, curvar à ESQUERDA direto CP016 para espera.  
Missed APCH: Climb to **3000'**. Maintain heading **250** until **1000'**. After, turn LEFT direct to CP016 for holding.  
RMK: NIL.

DEPARTAMENTO DE CONTROLE DO ESPAÇO AEREO



RWY07	1.2	2.0	3.0	4.0	CP020	Ground Speed (KT)	90	110	130	150	170	190
ALT	500	750	1070	1380	1700	FPM	500	600	700	800	900	NA
(HGT)	450	698	1018	1328	1648	FAF-MAPT	NA					

STRAIGHT-IN	CAT	A	B	C	D	E
	DA / (OCH)	401' / (349')				
LNAV/VNAV	ALS/NO ALS/ RVR ALS (m)	NIL / 1600 / NIL				
	MDA / OCH	500' / (450')				
LNAV	ALS/NO ALS/ RVR ALS (m)	NIL / 1600 / NIL		NIL / 2100 / NIL		
	MDA / (OCH)	NA				
CIRCLING	MDA / (OCH)	NA				
	VIS (m)	NA				

CHANGES: AD ELEV, DECAVAR IDENT, LAYOUT, RMK, TA.