

**INSTRUMENT APPROACH  
CHART (IAC)**

**TABATINGA / Tabatinga, INTL (SBTT)**

**AD ELEV: 263'**

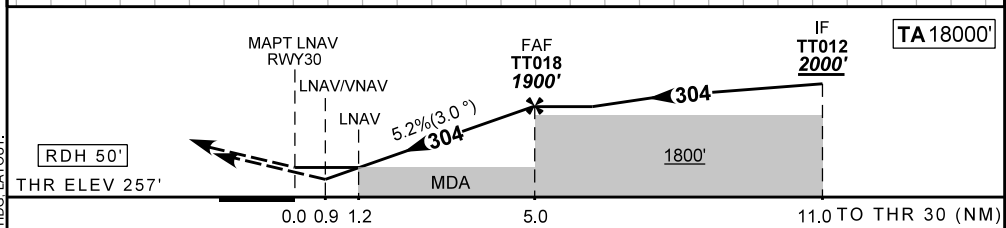
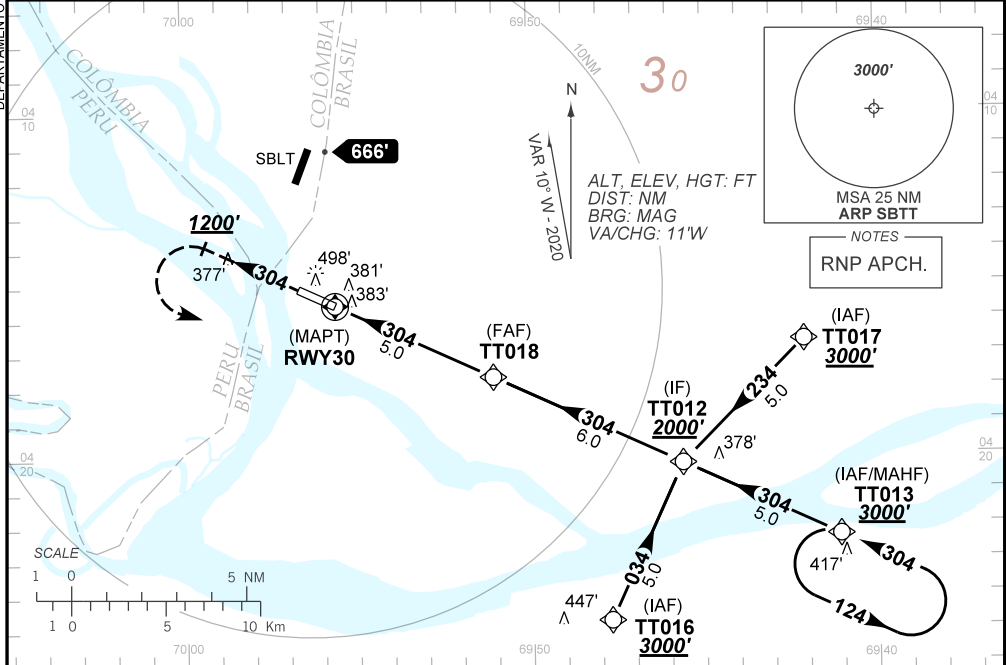
**RNP Z RWY 30**

ATIS <b>NIL</b>	APP AMAZONAS <b>119.10 128.60</b>	AFIS TABATINGA <b>125.90</b>	GND/C <b>NIL</b>
TEMP LNAV/VNAV <b>MIN 10°C / MAX 50°C</b>	FINAL CRS <b>304°</b>	FAF: <b>1900'</b>	LNAV/VNAV DA / (OCH): <b>603' / (347')</b>
LNAV		MDA / (OCH): <b>670' / (420')</b>	

APCH Perdida: Subir para **3000'**. Manter rumo **304** até passar **1200'**. Então, curvar à ESQUERDA direto para TT013 para espera.

Missed APCH: Climb to **3000'**. Maintain course **304** until passing **1200'**. Then, turn LEFT direct to TT013 for holding.

RMK: NIL.



RWY30	0.9	1.2	2.0	3.0	4.0	TT018	Ground Speed (KT)	090	110	130	150	170	180
ALT	603	670	950	1268	1587	1900	FPM	500	600	700	800	900	1000
(HGT)	347	420	687	1005	1324	1637	FAF-MAPT	NA					

STRAIGHT-IN	CAT	A	B	C	D	E
	DA / (OCH)	603' / (347')				
LNAV/VNAV	ALS/NO ALS/ RVR ALS (m)	NIL / 1600 / NIL				
	MDA / (OCH)	670' / (420')				
LNAV	ALS/NO ALS/ RVR ALS (m)	NIL / 1600 / NIL		NIL / 1900 / NIL		
	MDA / (OCH)	NA				
CIRCLING	MDA / (OCH)	NA				
	VIS (m)	NA				

DEPARTAMENTO DE CONTROLE DO ESPAÇO AEREO

CHANGES: ADEL, IDENT, FREQ, MINM, DEC, HDG, LAYOUT.