

**INSTRUMENT APPROACH
CHART (IAC)**

TEFÉ / Tefé (SBTF)

AD ELEV: 186'

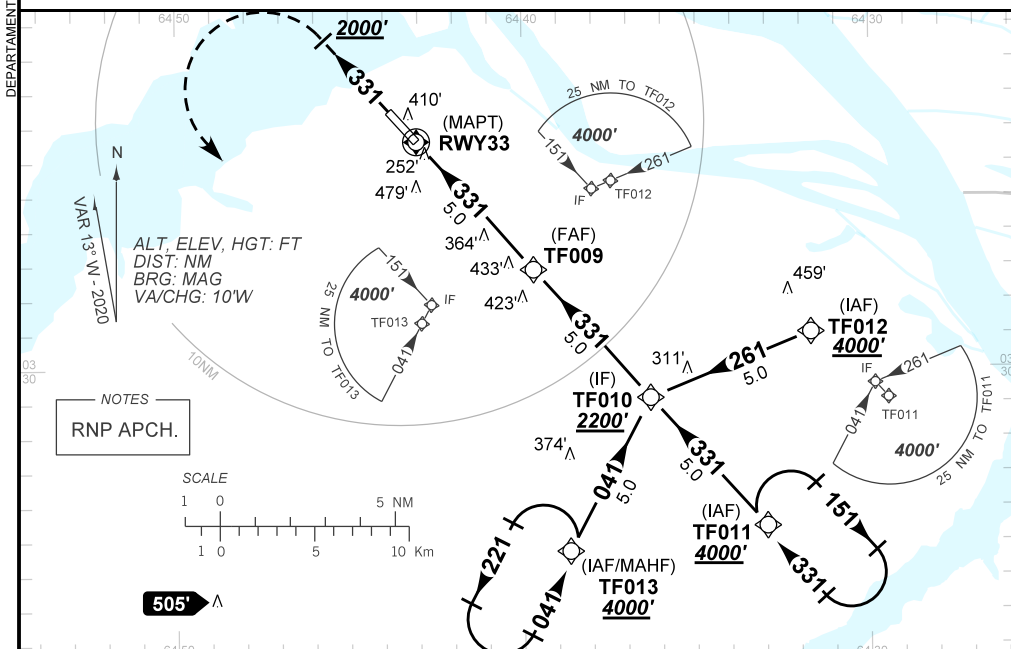
RNP Y RWY 33

ATIS NIL	APP NIL	AFIS TEFÉ 125.60	GNDC NIL
TEMP LNAV/VNAV MIN 0°C / MAX 50°C	FINAL CRS 331°	FAF: 1810'	LNAV/VNAV DA / (OCH): 493' / (325')
			LNAV MDA / (OCH): 660' / (500')

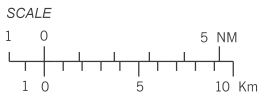
APCH Perdida: Subir para **4000'**. Manter o rumo **331** até passar **2000'**. Então, curvar à ESQUERDA direto TF013 para espera.

Missed APCH: Climb to **4000'**. Maintain course **331** until **2000'**. Then, turn LEFT direct to TF013 for holding.

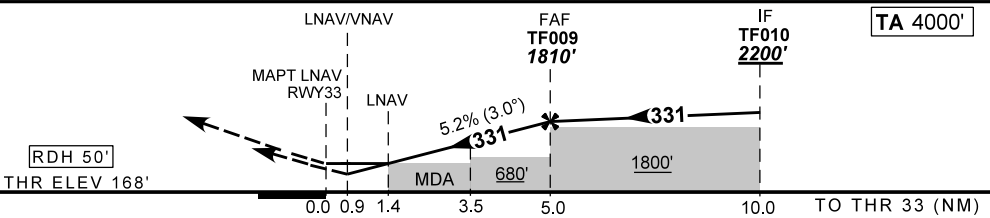
RMK: NIL



NOTES
RNP APCH.



505' Δ



RWY33	1.4	2.0	3.0	3.5	4.0	TF009	KT	090	110	130	150	170	190
ALT	660	855	1173	1333	1492	1810	FPM	500	600	700	800	900	NA
(HGT)	500	687	1005	1165	1324	1642	FAF-MAPT	NA					

STRAIGHT-IN	CAT	A	B	C	D	E
LNAV/VNAV	DA / (OCH)	493' / (325')			NA	
	ALS/NO ALS/ RVR ALS (m)	NIL / 1500 / NIL				
LVAV	MDA / (OCH)	660' / (500')			NA	
	ALS/NO ALS/ RVR ALS (m)	NIL / 1600 / NIL				
CIRCLING	MDA / (OCH)	NA				
	VIS (m)					

CHANGES: NEW CHART.