

**INSTRUMENT APPROACH  
CHART (IAC)**

**SANTARÉM / Maestro Wilson Fonseca, INTL (SBSN)**

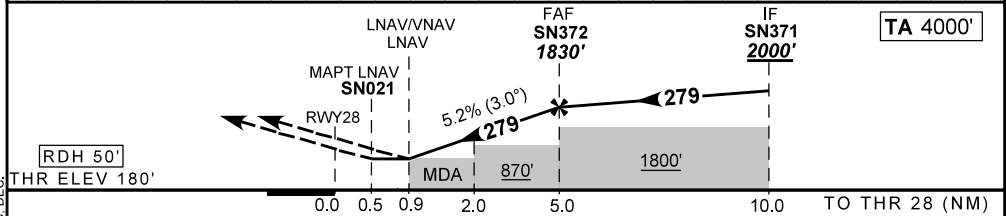
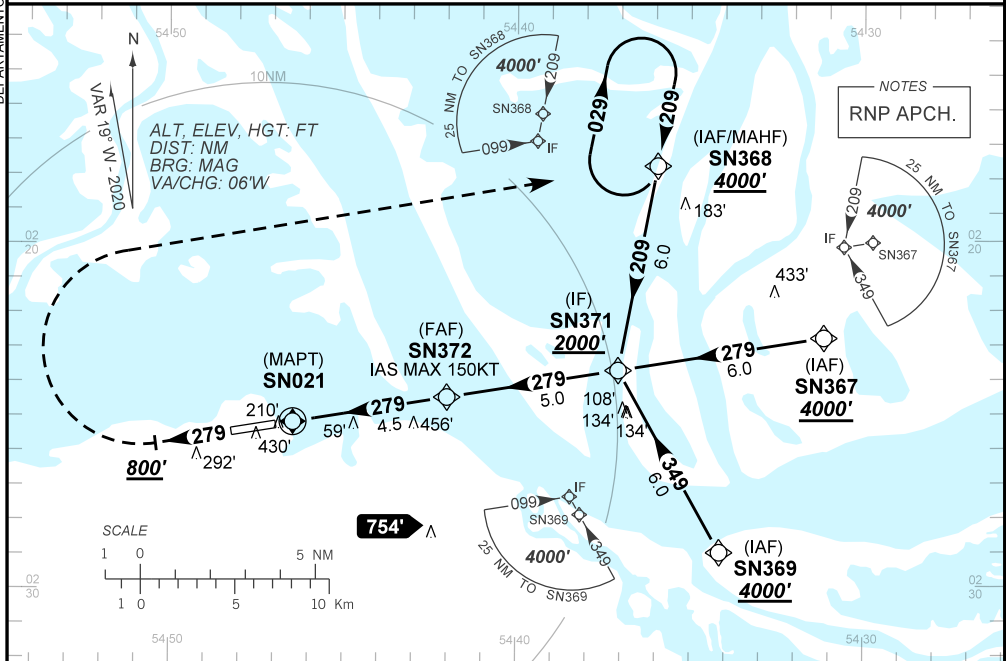
**RNP RWY 28**

**AD ELEV: 197'**

D-ATIS <b>NIL</b>	APP SANTARÉM <b>119.30</b>	TWR SANTARÉM <b>118.10</b>	GNDC <b>NIL</b>
TEMP LNAV/VNAV <b>MIN 10°C / MAX 50°C</b>	FINAL CRS <b>279°</b>	FAF: <b>1830'</b>	LNAV/VNAV DA / (OCH): <b>524' / (344')</b>
		LNAV MDA / (OCH): <b>530' / (350')</b>	

APCH Perdida: Subir para **4000'**. Manter proa **279** até **800'**. Após, curvar à DIREITA direto SN368 para espera.  
Missed APCH: Climb to **4000'**. Maintain heading **279** until **800'**. After, turn RIGHT direct to SN368 for holding.

RMK: NIL.



RWY28	0.9	2.0	3.0	4.0	SN372	Ground Speed (KT)	090	110	130	150	170	190
ALT	530	870	1185	1504	1830	FPM	500	600	700	800	900	NA
(HGT)	350	690	1005	1324	1650	FAF-MAPT	NA					

STRAIGHT-IN	CAT	A	B	C	D	E	
	DA / (OCH)	524' / (344')					NA
LNNAV/VNAV	ALS/NO ALS/ RVR ALS (m)	NIL / 1600 / NIL					
	MDA / (OCH)	530' / (350')					
LNAV	ALS/NO ALS/ RVR ALS (m)	NIL / 1600 / NIL					
	MDA / (OCH)	NA					
CIRCLING	MDA / (OCH)	NA					
	VIS (m)	NA					

DEPARTAMENTO DE CONTROLE DO ESPAÇO AÉREO

CHANGES: IDENT, MINM OPR, LAYOUT, PROC, DEC.