

STANDARD DEPARTURE CHART
INSTRUMENT (SID)

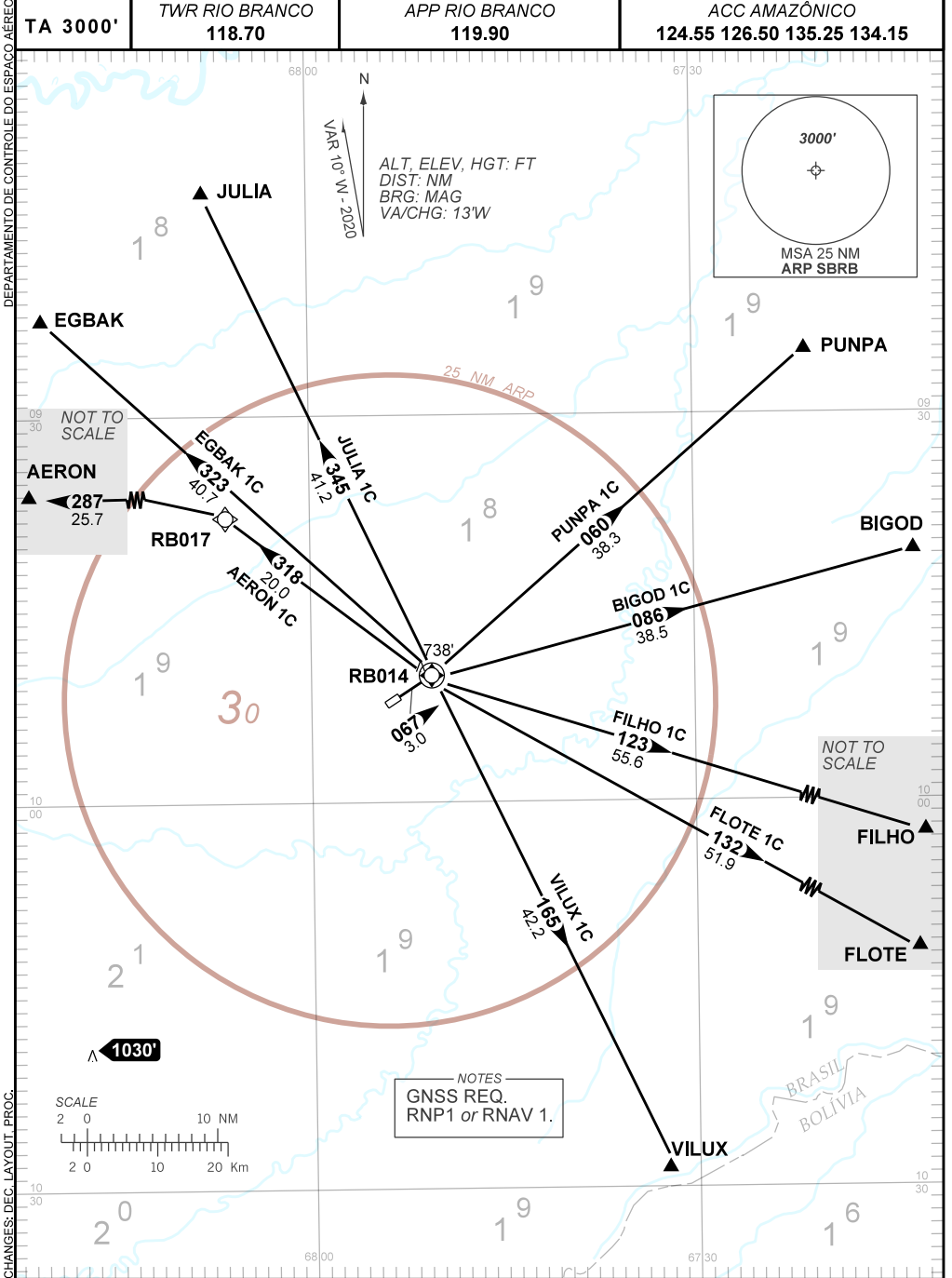
RIO BRANCO / Plácido de Castro (SBRB)

RWY 06

RNAV AERON 1C - BIGOD 1C - EGBAK 1C - FILHO 1C
FLOTE 1C - JULIA 1C - PUNPA 1C - VILUX 1C

AD ELEV: 633'

TA 3000'	TWR RIO BRANCO 118.70	APP RIO BRANCO 119.90	ACC AMAZÔNICO 124.55 126.50 135.25 134.15
----------	--------------------------	--------------------------	--



NOTES
GNSS REQ.
RNP1 or RNAV 1.