

**INSTRUMENT APPROACH  
CHART (IAC)**

VITÓRIA / Eurico de Aguiar Salles (SBVT)

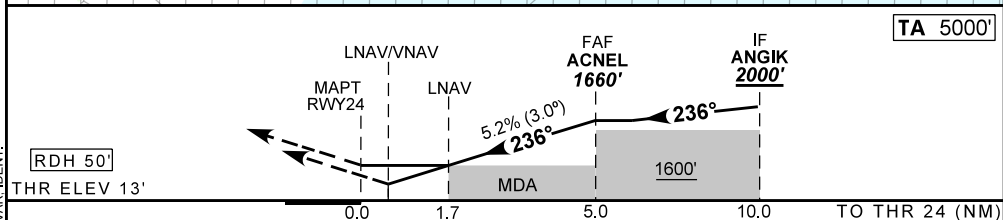
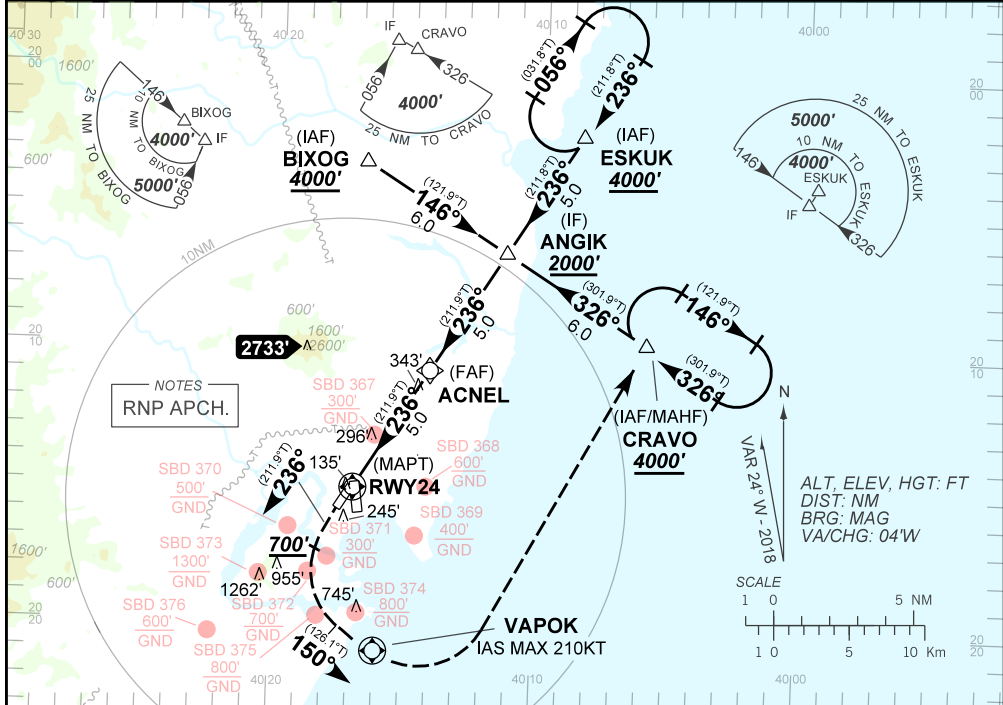
**RNAV(GNSS) V RWY 24**

**AD ELEV: 34'**

ATIS <b>127.575</b>	APP VITÓRIA <b>119.85 121.50</b>		TWR VITÓRIA <b>118.10 121.50</b>	GND VITÓRIA <b>121.95</b>
<b>N/A</b>	FINAL CRS <b>236°</b>	FAF <b>1660'</b>	LNAV/VNAV <b>DA / (OCH): REFER TO MNM</b>	LNAV <b>MDA / (OCH): 600' / (590')</b>

APCH Perdida: 1) Subir para **4000'**. Manter rumo **236°** até passar **700'**. Curvar à ESQUERDA, rumo **150°** para VAPOK. Após, curvar à ESQUERDA direto CRAVO para espera.  
 Missed APCH: 1) Climb to **4000'**. Maintain course **236°** until passing **700'**. Turn LEFT, course **150°** to VAPOK. After, turn LEFT direct to CRAVO for holding.

RMK: 1) Para sistemas não compensados Baro-VNAV, LNAV/VNAV NAO AUTORIZADO abaixo de 0°C ou acima de 40°C. 1) For uncompensated systems Baro-VNAV, LNAV/VNAV NOT AUTHORIZED below 0°C or above 40°C.



RWY24	1.7	2.0	3.0	4.0	ACNEL		KT	090	110	130	150	170	190
ALT	600	700	1018	1337	1660		FPM	500	600	700	800	900	NA
(HGT)	590	687	1005	1324	1647		FAF-MAPT			NA			

STRAIGHT-IN	CAT	A	B	C	D	E
LNAV/VNAV	DA / (OCH)		540' / (530')			
	ALS/NO ALS/ RVR ALS (m)	NIL / 1600 / NIL		NIL / 2400 / NIL		
LNAV/VNAV	DA / (OCH)		460' / (450')			NA
Missed APCH Climb Gradient	3.5%	ALS/NO ALS/RVR ALS (m)	NIL / 1600 / NIL		NIL / 2100 / NIL	
LNAV	MDA / (OCH)		600' / (590')			
	VIS (m)	NIL / 1600 / NIL		NIL / 2700 / NIL		

CHANGES: PROC. LAYOUT, ELEV. DEC. VAR. IDENT.