

SÃO LUÍS / MARECHAL CUNHA MACHADO, INTL
 MA-BRASIL
VOR/DME RWY 24

IAC - SBSL

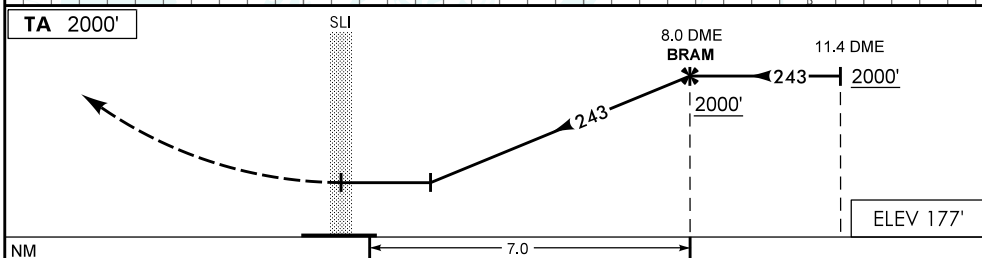
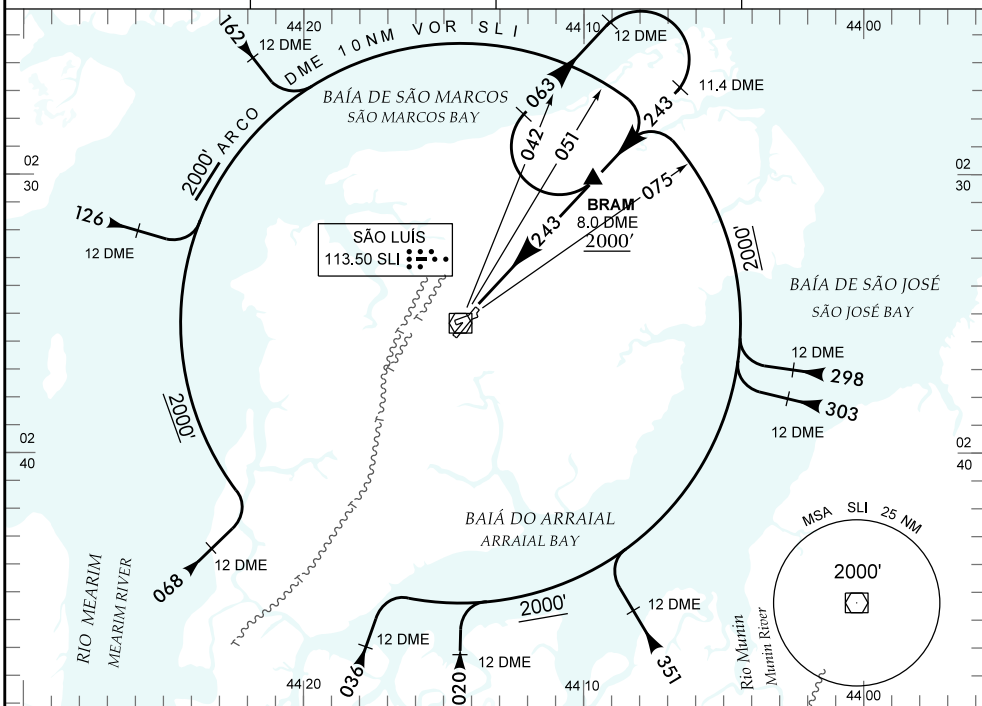
WGS-84

D-ATIS

APP SÃO LUÍS
119.10

TWR SÃO LUÍS
118.90

GNDC
NIL



APROXIMAÇÃO PERDIDA
MISSED APPROACH

SUBIR PARA 2000' NA RDL 243, APÓS, CURVAR À DIREITA E EXECUTAR O ARCO 10 NM PARA ESPERA NO REP BRAM.
 CLIMB TO 2000 FT ON RDL 243, THEN, TURN RIGHT AND EXECUTE 10 NM ARC FOR HOLDING AT BRAM REP.

RMK: NIL

C	POUSO DIRETO RWY 24	STRAIGHT-IN TO RWY 24	IFR OPS	DIURNA / NOTURNA DAY / NIGHT	PARA CIRCULAR TO CIRCLING (RMK)			
	VOR/DME				CAT	MDA	OCH	VIS
A	MDA 590'				OCH 420'			
T	VIS							
A	1600 M				A	600'	430'	1600 M
B					B	680'	510'	
C					C			3200 M
D	1900 M				D	900'	730	3600 M
E					E			4000 M

RAZAO DE DESCIDA NA APROXIMAÇÃO FINAL
 RATE OF DESCENT ON FINAL APPROACH

KT	090	110	130	150	170	190				
FPM	450	550	650	750	850	1000				

CHANGES: D-ATIS, ELEV, FREQ, MINM, OPR

DEPARTAMENTO DE CONTROLE DO ESPAÇO AEREO - COMAER - BRASIL