

**INSTRUMENT APPROACH  
CHART (IAC)**

**RIO DE JANEIRO / Galeão - Antônio Carlos Jobim, INTL (SBGL)**

**AD ELEV: 28'**

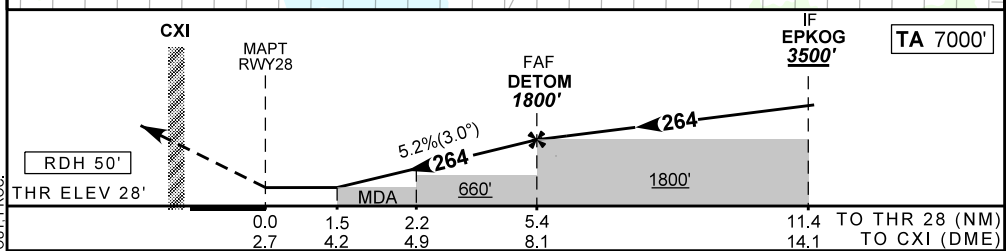
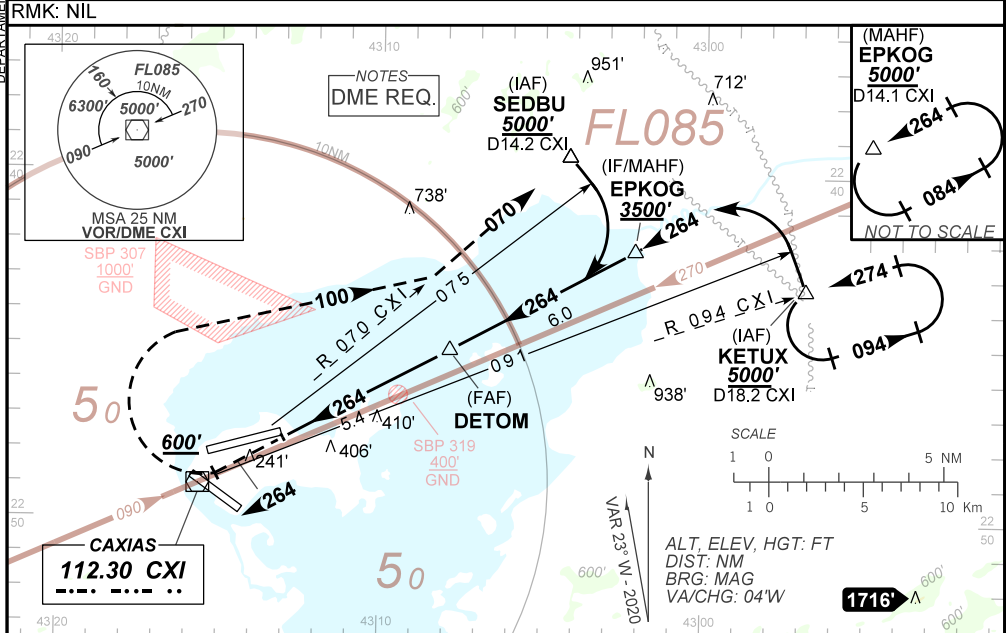
**VOR Z RWY 28**

|                              |  |                                    |  |
|------------------------------|--|------------------------------------|--|
| D-ATIS<br><b>127.60</b>      | APP RIO<br><b>128.90 119.725 119.00 129.80 129.20<br/>134.40 121.25 124.95 134.95 119.35</b> | TWR GALEÃO<br><b>118.00 118.20</b> | GNDC GALEÃO<br><b>121.65 128.35</b>      |
| VOR CXI<br><b>112.30 MHz</b> | FINAL CRS<br><b>264°</b>   | FAF:<br><b>1800'</b>               | VOR<br>MDA / (OCH): <b>570' / (550')</b> |
|                              |  |                                    | N/A                                      |

APCH Perdida: 1) Subir para **5000'**. Manter proa **264** até cruzar **600'**. Após, curvar à DIREITA, proa **100** para interceptar a RDL **070** do VOR CXI até SEDBU e ingressar no arco DME 14.2 CXI para espera em EPKOG.  
2) IAS MAX 210KT

Missed APCH: 1) Climb to **5000'**. Maintain heading **264** until passing **600'**. After, turn RIGHT heading **100** to intercept **070** RDL CXI VOR up to SEDBU to join 14.2 DME CXI arc for holding at EPKOG. 2) IAS MAX 210KT.

RMK: NIL



|       |     |     |      |      |       |  |          |     |     |     |     |     |      |
|-------|-----|-----|------|------|-------|--|----------|-----|-----|-----|-----|-----|------|
| RWY28 | 1.5 | 2.2 | 3.0  | 4.0  | DETOM |  | KT       | 090 | 110 | 130 | 150 | 170 | 190  |
| ALT   | 570 | 777 | 1033 | 1352 | 1800  |  | FPM      | 500 | 600 | 700 | 800 | 900 | 1000 |
| (HGT) | 550 | 749 | 1005 | 1324 | 1772  |  | FAF-MAPT | NA  |     |     |     |     |      |

|             |                         |                   |   |                   |   |   |
|-------------|-------------------------|-------------------|---|-------------------|---|---|
| STRAIGHT-IN | CAT                     | A                 | B | C                 | D | E |
| VOR         | MDA / (OCH)             | 570' / (550')     |   |                   |   |   |
|             | ALS/NO ALS/ RVR ALS (m) | 1200 / 1600 / NIL |   | 2100 / 2500 / NIL |   |   |
| CIRCLING    | MDA / (OCH)             | NA                |   |                   |   |   |
|             | VIS (m)                 |                   |   |                   |   |   |

DEPARTAMENTO DE CONTROLE DO ESPAÇO AÉREO

CHANGES: DEC. EAC. FREQ. IDENT. LAYOUT. PROC.