

**INSTRUMENT APPROACH
CHART (IAC)**

PARAUPEBAS / Carajás (SBCJ)

ILS W RWY 10

AD ELEV: 2064'

DEPARTAMENTO DE CONTROLE DO ESPAÇO AÉREO

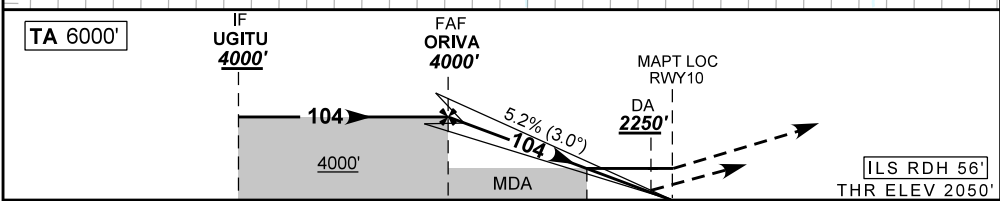
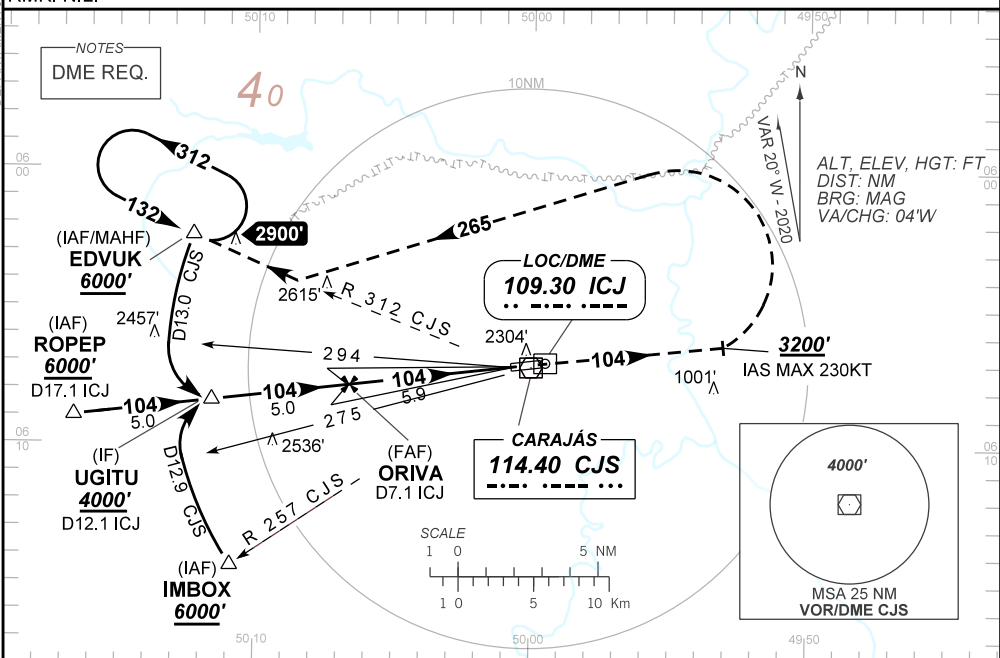
ATIS NIL	APP NIL	AFIS CARAJÁS 131.70	GNDC NIL
--------------------	-------------------	-------------------------------	--------------------

LOC ICJ 109.30 MHz	FINAL CRS 104°	FAF: 4000'	CAT I DA / (OCH): 2250' / (200')	LOC ONLY MDA / (OCH): 2560' / (510')
------------------------------	--------------------------	----------------------	--	--

APCH Perdida: Subir para **5500'**. Manter rumo **104** até cruzar **3200'**. Então, curvar à ESQUERDA proa **265** para interceptar RDL **312** CJS para espera em EDVUK.

Missed APCH: Climb to **5500'**. Maintain course **104** until passing **3200'**. Then, turn LEFT on heading **265** to intercept **312** CJS RDL for holding at EDVUK.

RMK: NIL.



TO THR 10 (NM)	10.9	5.9	1.4	0.5	0.0
TO ICJ (DME)	12.1	7.1	2.6	1.7	1.2

ORIVA	5.0	4.0	3.0	2.0	1.4	RWY10	Ground Speed (KT)	090	110	130	150	170	190
4000	3698	3380	3061	2743	2560	ALT	FPM	500	600	700	800	900	NA
1950	1648	1330	1011	693	510	(HGT)	FAF-MAPT	NA					

STRAIGHT-IN	CAT	A	B	C	D	E
	DA / (OCH)	2250' / (200')				
CAT I	ALS/NO ALS/ RVR ALS (m)	NIL / 1200 / NIL				
	MDA / (OCH)	2560' / (510')				
LOC	ALS/NO ALS/ RVR ALS (m)	NIL / 1200 / NIL		NIL / 2400 / NIL		
	MDA / (OCH)	NA				
CIRCLING	MDA / (OCH)	NA				
	VIS (m)	NA				

CHANGES: NEW CHART