

INSTRUMENT APPROACH CHART (IAC)

RECIFE / Guarapes - Gilberto Freyre, INTL (SBRF)

AD ELEV: 33'

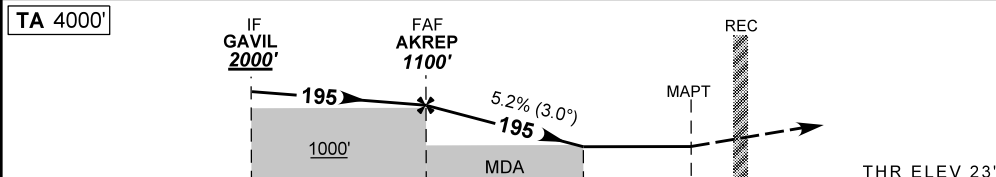
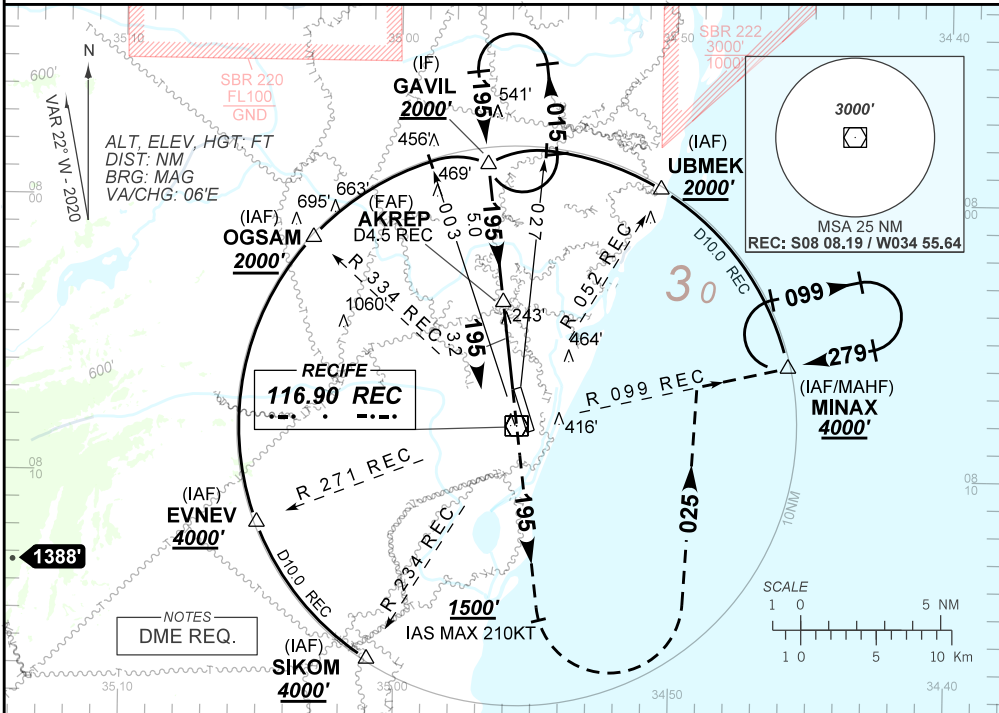
VOR Z RWY 18

D-ATIS 127.65	APP RECIFE 119.50 119.95 120.40 129.60 121.50				TWR RECIFE 118.35 125.25 122.80 (MIL) 121.50		GNDZ RECIFE 121.85
VOR REC 116.90	FINAL CRS 195°	FAF 1100'	N/A		VOR MDA / (OCH): 580' / (560')		

APCH Perdida: Subir para **4000'**. Manter rumo **195°** até cruzar **1500'**. Então, curvar à ESQUERDA proa **025°** para interceptar a RDL **099°** do VOR REC até MINAX para espera.

Missed APCH: Climb to **4000'**. Maintain course **195°** until passing **1500'**. Then, turn LEFT heading **025°** to intercept **099°** RDL REC VOR up to MINAX for holding.

RMK: NIL.



TO THR 18 (NM)	8.2	3.2	1.6	0.0
TO REC (DME)	9.5	4.5	2.9	1.3

	AKREP	3.0	2.0	1.6	RWY18	KT	090	110	130	150	170	190
	1100	1028	710	580	ALT	FPM	500	600	700	800	900	NA
	1067	1005	687	560	(HGT)	FAF-MAPT	NA					

STRAIGHT-IN	CAT	A	B	C	D	E
VOR	MDA / (OCH)	580' / (560')				
	ALS/NO ALS/RVR ALS (m)	NIL / 1600 / NIL			NIL / 2500 / NIL	
CIRCLING	MDA / (OCH)	NA				
	VIS (m)	NA				

CHANGES: MSA.