

**INSTRUMENT APPROACH  
CHART (IAC)**

**RIO BRANCO / Plácido de Castro (SBRB)**

**AD ELEV: 633'**

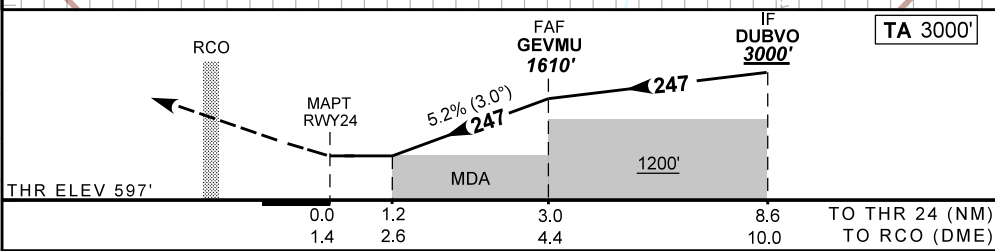
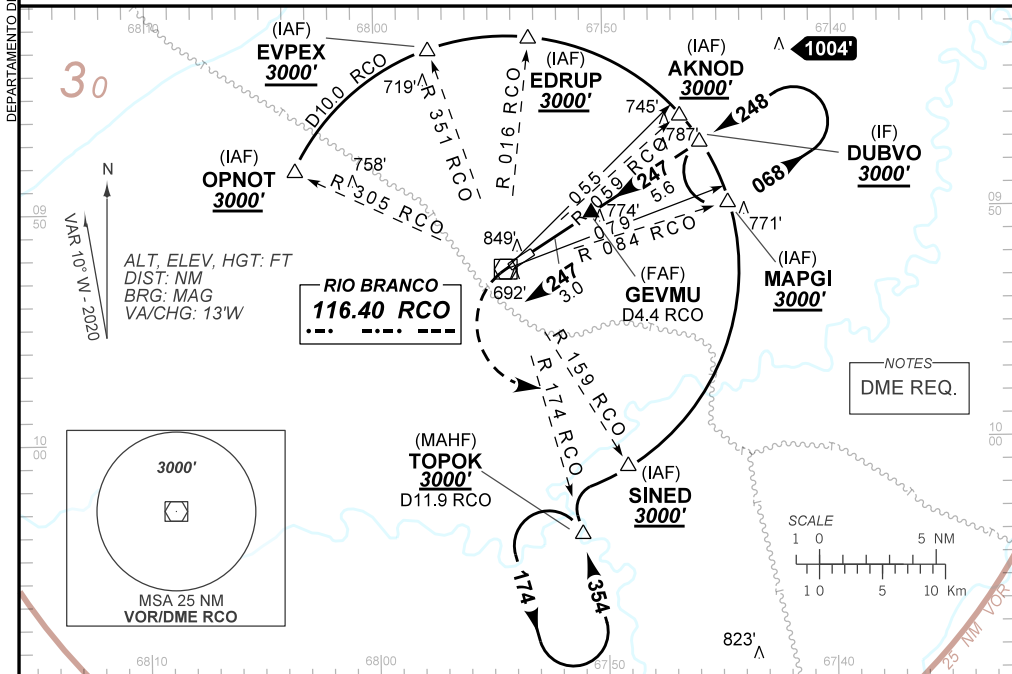
**VOR Z RWY 24**

D-ATIS	APP RIO BRANCO <b>119.90</b>		TWR RIO BRANCO <b>118.70</b>	GNDC NIL
VOR RCO <b>116.40 MHz</b>	FINAL CRS <b>247°</b>	FAF: <b>1610'</b>	N/A	VOR MDA / (OCH): <b>1030' / (440')</b>

APCH Perdida: Subir para **3000'** na proa do VOR RCO. Ao bloquear o VOR RCO, curvar à ESQUERDA para interceptar a RDL **174 RCO** até TOPOK para espera.

Missed APCH: Climb to **3000'** direct to RCO VOR. After RCO VOR overhead, turn LEFT to intercept **174** RDL from RCO VOR until TOPOK for holding.

RMK: NIL.



RWY24	1.2	2.0	GEVMU			Ground Speed (KT)	090	110	130	150	170	190
ALT	1030	1284	1610			FPM	500	600	700	800	900	NA
(HGT)	440	687	1013			FAF-MAPT	NA					

STRAIGHT-IN	CAT	A	B	C	D	E
	MDA / (OCH)	1030' / (440')				
VOR	ALS/NO ALS/ RVR ALS (m)	NIL / 1600 / NIL			NIL / 2000 / NIL	
CIRCLING	MDA / (OCH)	NA				
	VIS (m)					

CHANGES: D-ATIS, FREQ., HDG., LAYOUT, MINM OPR., OBST., PROC., VAR.