

**INSTRUMENT APPROACH  
CHART (IAC)**

**ARACATI / Regional de Aracati (SBAC)**

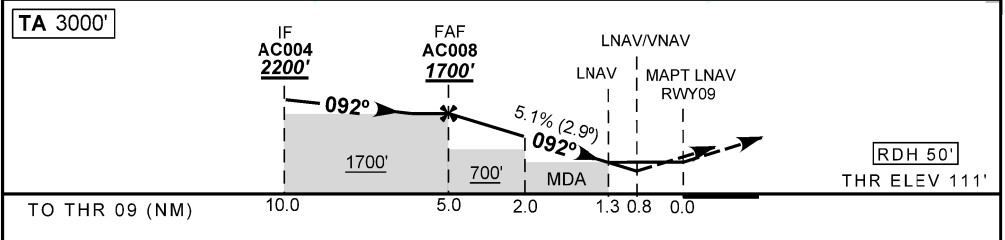
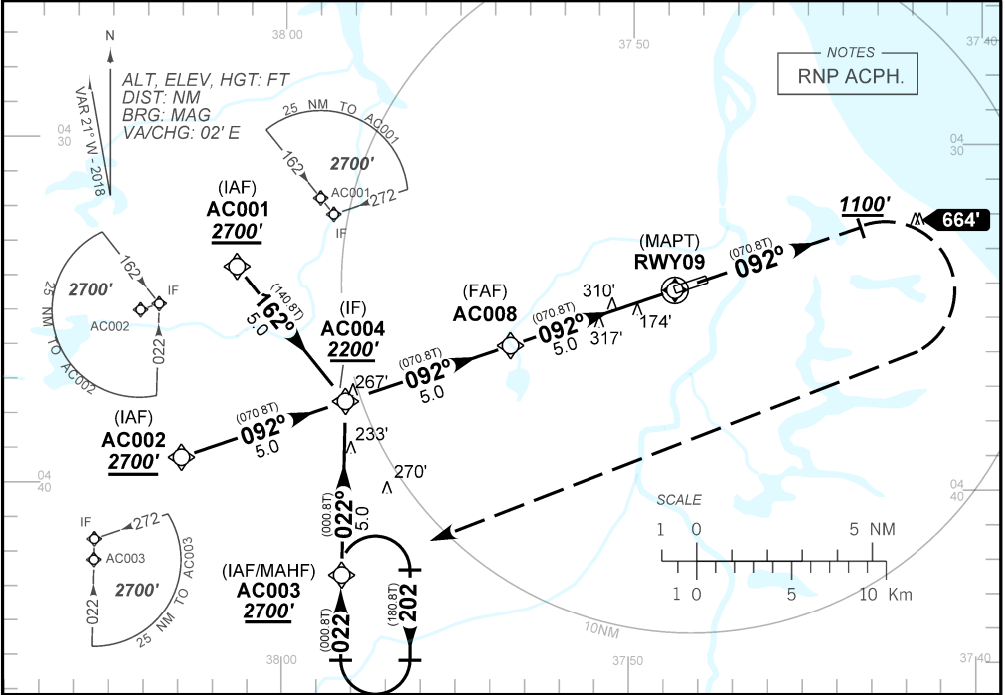
**RNAV(GNSS) RWY 09**

**AD ELEV: 117'**

ATIS <b>NIL</b>	APP <b>NIL</b>	AFIS ARACATI <b>131.25</b>	GNDC <b>NIL</b>
<b>N/A</b>	FINAL CRS <b>092°</b>	FAF <b>1700'</b>	LNAV MDA / (OCH): <b>560' (450')</b>
		LNAV/VNAV DA / (OCH): <b>394' / (290')</b>	

APCH Perdida: Subir para **2700'**. Após **1100'**, curvar à DIREITA direto AC003 para espera.  
Missed APCH: Climb to **2700'**. After **1100'**, turn RIGHT direct to AC003 for holding.

RMK: 1) Para sistemas não compensados Baro-VNAV, LNAV/VNAV NÃO AUTORIZADO abaixo de 5°C ou acima de 48°C.  
1) For uncompensated systems Baro-VNAV, LNAV/VNAV NOT AUTHORIZED below 5°C or above 48°C.



	AC008	4.0	3.0	2.0	1.3	RWY09	KT	090	110	130	150	170	190
	1700	1392	1084	777	560	ALT	FPM	470	570	670	770	880	NA
	1589	1281	973	666	450	(HGT)	FAF-MAPT			NA			

STRAIGHT-IN	CAT	A	B	C	D	E	
	DA / OCH	394' / (290')					NA
	ALS/NO ALS/ RVR ALS (m)	NIL / 1400 / NIL					
	MDA / (OCH)	560' / (450')					
ALS/NO ALS/ RVR ALS (m)	NIL / 1600 / NIL		NIL / 2100 / NIL				
CIRCLING	MDA / (OCH)	NA					
	VIS (m)						

CHANGES IDENT