

**INSTRUMENT APPROACH
CHART (IAC)**

ARAÇATUBA / Araçatuba (SBAU)

AD ELEV: 1362'

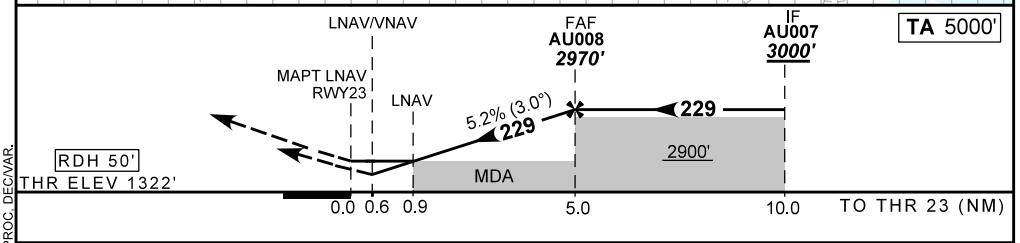
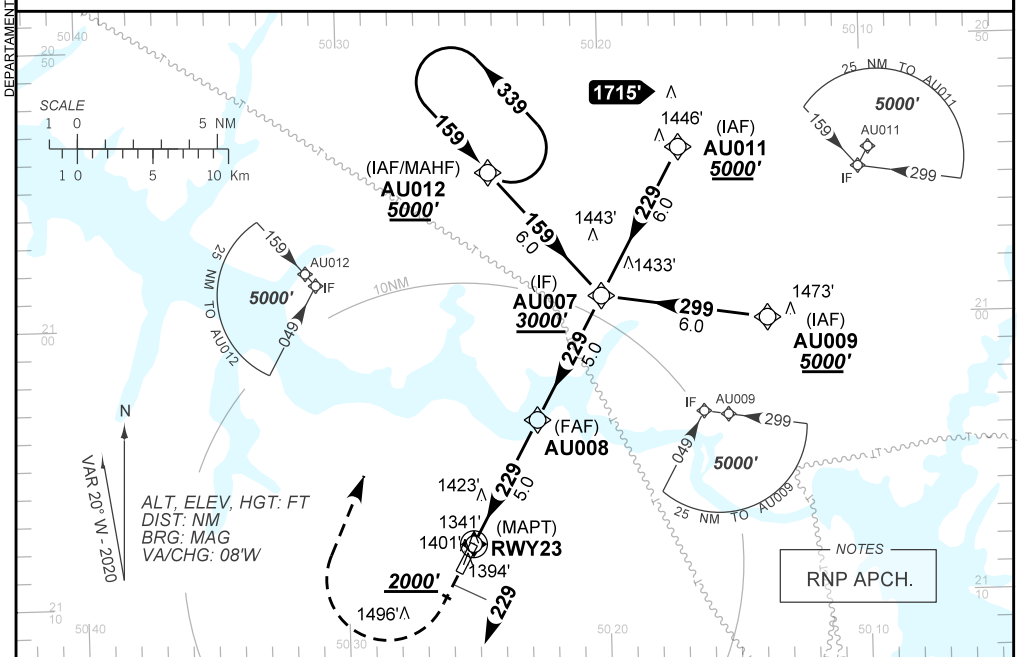
RNP RWY 23

ATIS NIL		APP NIL		AFIS ARAÇATUBA 130.60		GNDC NIL	
TEMP LNAV/VNAV MIN 0°C / MAX 50 °C		FINAL CRS 229°		FAF: 2970'		LNAV DA / (OCH): 1572' / (250')	
						MDA / (OCH): 1670' / (350')	

APCH Perdida: Subir para **5000'**. Manter rumo **229** até cruzar **2000'**. Após, curvar à DIREITA direto para AU012 para espera.

Missed APCH: Climb to **5000'**. Maintain course **229** until passing **2000'**. After, turn RIGHT direct to AU012 for holding.

RMK: NIL.



RWY23	0,6	0,9	2,0	3,0	4,0	AU008	Ground Speed (KT)	090	110	130	150	170	190
ALT	1572	1670	2009	2327	2646	2970	FPM	500	600	700	800	900	NA
(HGT)	250	350	687	1005	1324	1648	FAF-MAPT	NA					

STRAIGHT-IN	CAT	A	B	C	D	E
	DA / (OCH)	1572' / (250')				
LNAV/VNAV	ALS/NO ALS/ RVR ALS (m)	NIL / 1300 / NIL				
	MDA / (OCH)	1670' / (350')				
LNAV	ALS/NO ALS/ RVR ALS (m)	NIL / 1600 / NIL				
	MDA / (OCH)	NA				
CIRCLING	MDA / (OCH)	NA				
	VIS (m)	NA				