

**INSTRUMENT APPROACH  
CHART (IAC)**

**RIO BRANCO / Plácido de Castro (SBRB)**

**AD ELEV: 633'**

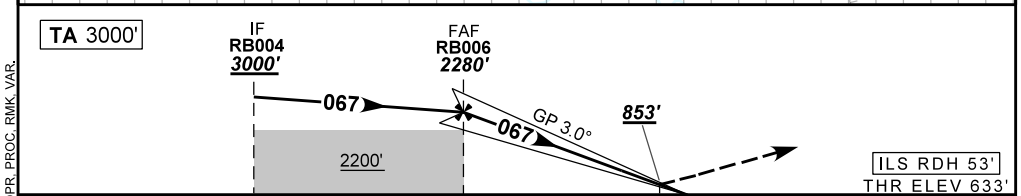
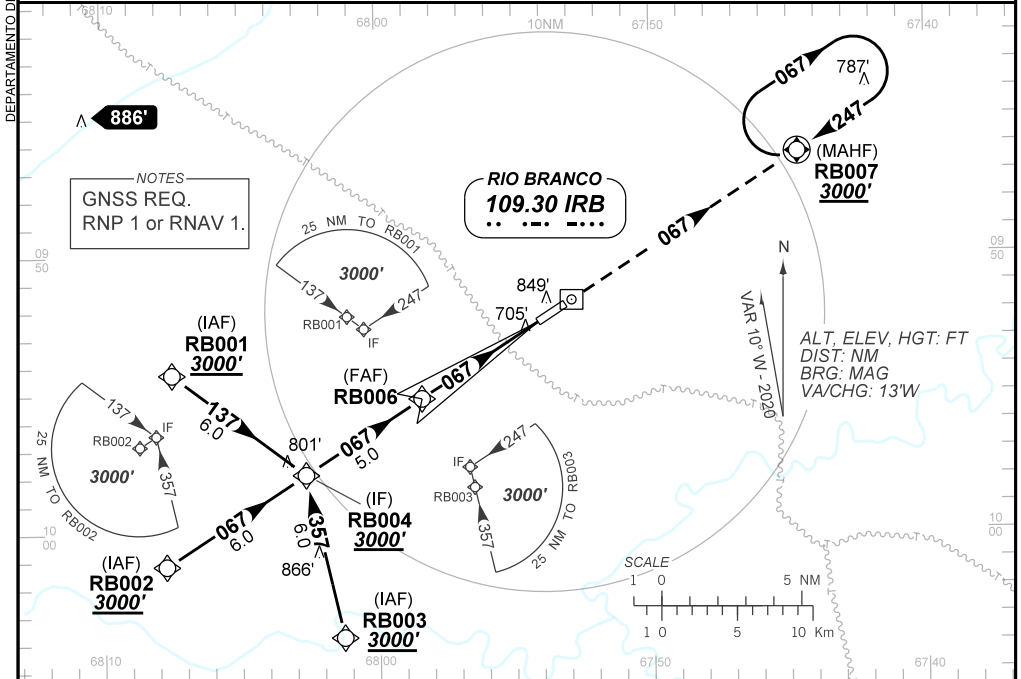
**ILS V RWY 06**

D-ATIS	APP RIO BRANCO <b>119.90</b>		TWR RIO BRANCO <b>118.70</b>	GNDC <b>NIL</b>
LOC IRB <b>109.30 MHz</b>	FINAL CRS <b>067°</b>	FAF: <b>2280'</b>	CAT I DA / (OCH): <b>853' / (220')</b>	N/A

APCH Perdida: Subir para **3000'** no rumo **067** para espera em RB007.

Missed APCH: Climb to **3000'** on course **067** for holding at RB007.

RMK: (\*)VIS RVR ALS 550m para APCH utilizando Diretor de Voo, Piloto Automático ou Head-Up Display (HUD).  
(\*)VIS RVR ALS 550m for APCH using a Flight Director, Autopilot or Head-Up Display (HUD).



TO THR 06 (NM)	10.0	5.0	0.7	0.0
TO IRB (DME)	11.4	6.4	2.1	1.4

RB006	4.0	3.0	2.0	1.0	0.7	RWY06	Ground Speed (KT)	090	110	130	150	170	190
2280	1960	1641	1323	1004	853	ALT	FPM	500	600	700	800	900	NA
1367	1327	1008	690	371	220	(HGT)	FAF-MAPT	NA					

STRAIGHT-IN	CAT	A	B	C	D	E
	DA / (OCH)	853' / (220')				
CAT I	ALS/NO ALS/ RVR ALS (m)	800 / 1200 / 700(*)				
		NA				
CIRCLING	MDA / (OCH)	NA				
	VIS (m)	NA				