

**INSTRUMENT APPROACH CHART (IAC)**

**RIO DE JANEIRO / Galeão - Antônio Carlos Jobim, INTL (SBGL)**

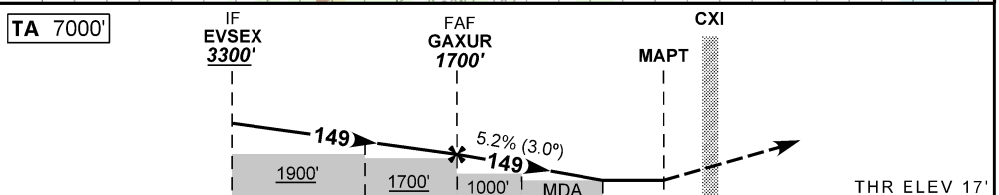
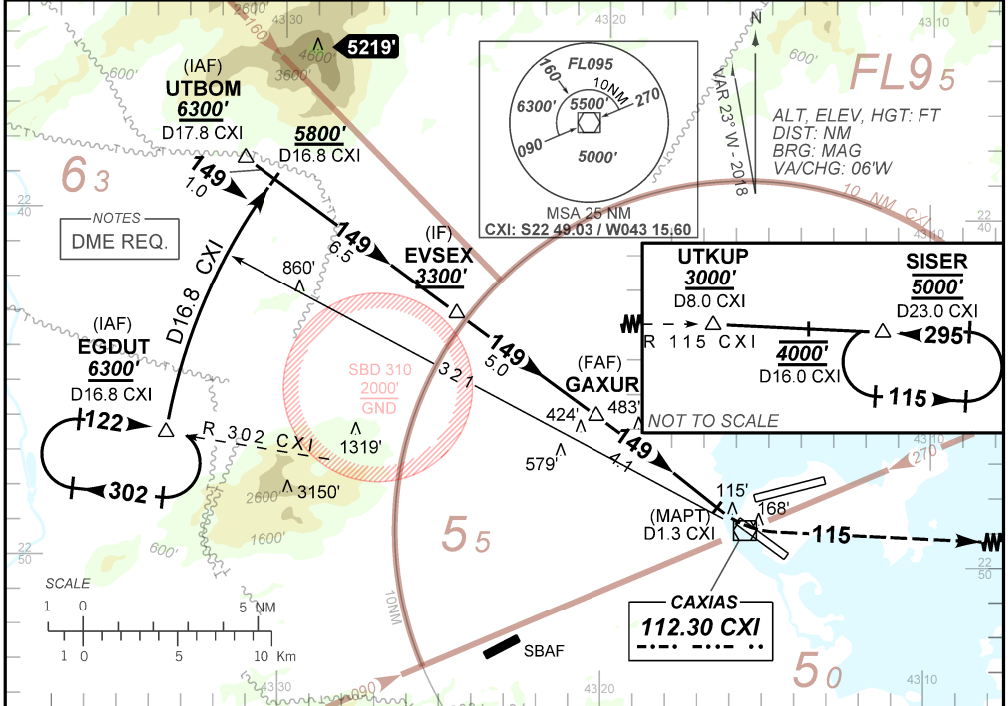
**AD ELEV: 28'**

**VOR Y RWY 15**

D-ATIS <b>127.60</b>	APP RJO <b>129.80 124.95 134.95</b> <b>125.95 128.90 119.35</b>	TWR GALEÃO <b>118.00 118.20</b>	GNDC GALEÃO <b>121.65 128.35</b>
VOR CXI <b>112.30 MHZ</b>	FINAL CRS <b>149°</b>	FAF <b>1700'</b>	N/A
		VOR/DME MDA / (OCH): <b>450' / (440')</b>	

APCH Perdida: Subir para **5000'**, gradiente MNM 5%. Curvar à ESQUERDA RDL 115 CXI até UTKUP.  
Após, manter RDL 115 CXI até SISER para espera.  
Missed APCH: Climb to **5000'**, MNM gradient 5%. Turn LEFT 115 CXI RDL up to UTKUP. Then, maintain 115 CXI RDL up to SISER for holding.

RMK: NIL.



TO THR 15 (DME)	10.0	8.0	5.1	3.0	1.2	1.0	0.0											
TO CXI (DME)	10.3	8.3	5.4	3.3	1.4	1.3	0.3											
	GAXUR	4.0	3.0	2.0	1.2	RWY15												
		1700	1350	1030	730	450	ALT											
		1683	1333	1013	713	433	(HGT)											

STRAIGHT-IN	CAT	A	B	C	D	E
	MDA / (OCH)	450' / (440')				
VOR/DME	ALS/NO ALS/RVR ALS (m)	800 / 1600 / NIL			1300 / 2000 / NIL	
	MDA / (OCH)	NA				
CIRCLING	VIS (m)	NA				

CHANGES: FREC.