

**INSTRUMENT APPROACH
CHART (IAC)**

CASCADEL / Coronel Adalberto Mendes da Silva (SBCA)

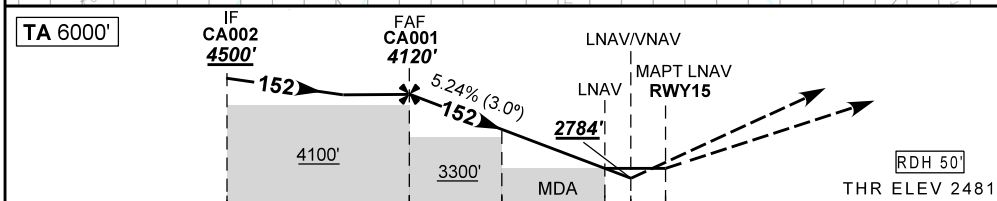
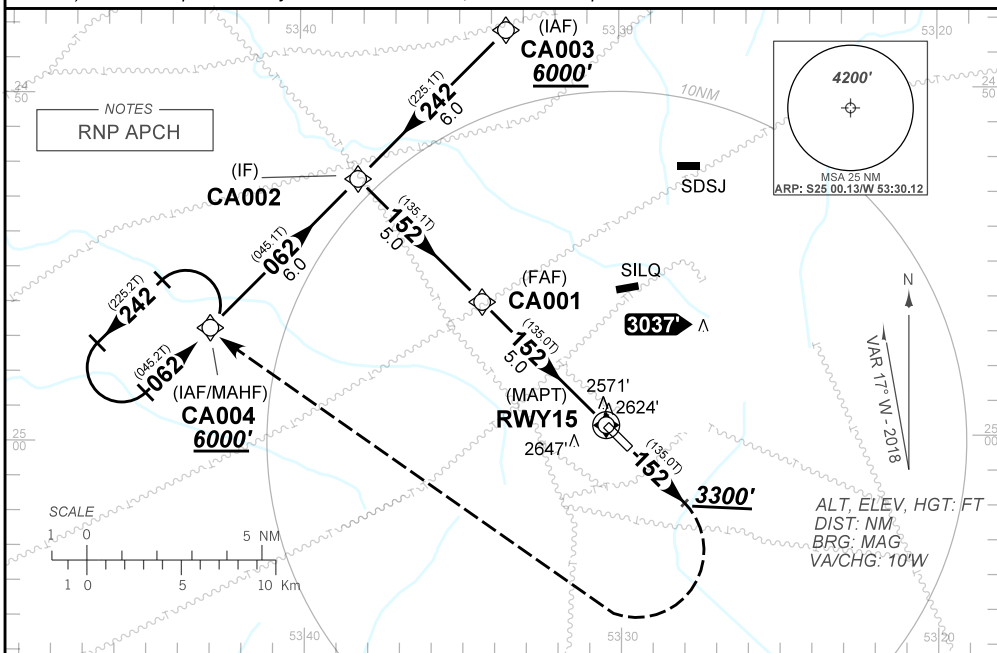
AD ELEV: 2481'

RNAV (GNSS) RWY 15

ATIS NIL	APP NIL	AFIS CASCADEL 131.85	GNDC NIL
N/A	FINAL CRS 152°	FAF 4120'	LNAV / VNAV DA / (OCH): 2784' (310')
			LNAV MDA / (OCH): 2870' (390')

APCH Perdida: 1) Subir para **6000'**. Manter rumo **152°**. Após **3300'** curvar à DIREITA direto CA004 para espera.
Missed APCH: 1) Climb to **6000'**. Maintain course **152°** until **3300'**. After, turn RIGHT direct CA004 for holding.

RMK: 1) Para sistemas BARO-VNAV não compensados, procedimentos LNAV/VNAV não autorizado abaixo de -10°C.
1) For uncompensated systems BARO-VNAV, LNAV/VNAV procedure not authorized below -10°C.



TO THR 15 (NM) 10.0 5.0 3.0 1.1 0.8 0.0

	CA001	4.0	3.0	2.0	1.1	RWY15	KT	090	110	130	150	170	190
	4120	3805	3487	3168	2870	ALT	FPM	500	600	700	800	900	NA
	1639	1324	1006	687	389	(HGT)	FAF-MAPT	NA					

STRAIGHT-IN	CAT	A	B	C	D	E
LNAV VNAV	DA / (OCH)	2784' / (310')				
	ALS/NO ALS/RVR ALS (m)	NIL / 1400 / NIL				
LNAV	MDA / (OCH)	2870' / (390')				
	ALS/NO ALS/RVR ALS (m)	NIL / 1600 / NIL		NIL / 1800 / NIL		
CIRCLING	MDA / (OCH)	NA				
	VIS (m)					

CHANGES: PROC.