

IAC - SBNT

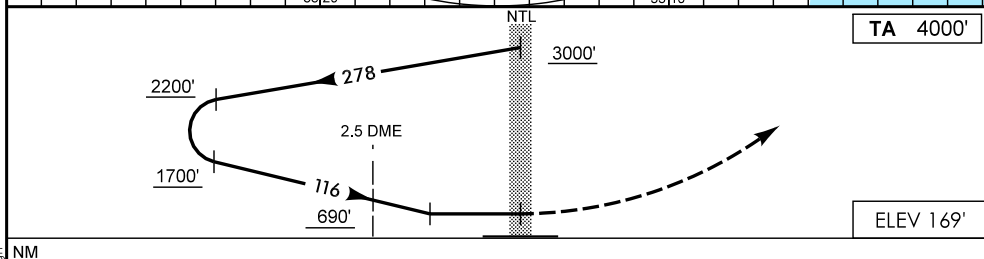
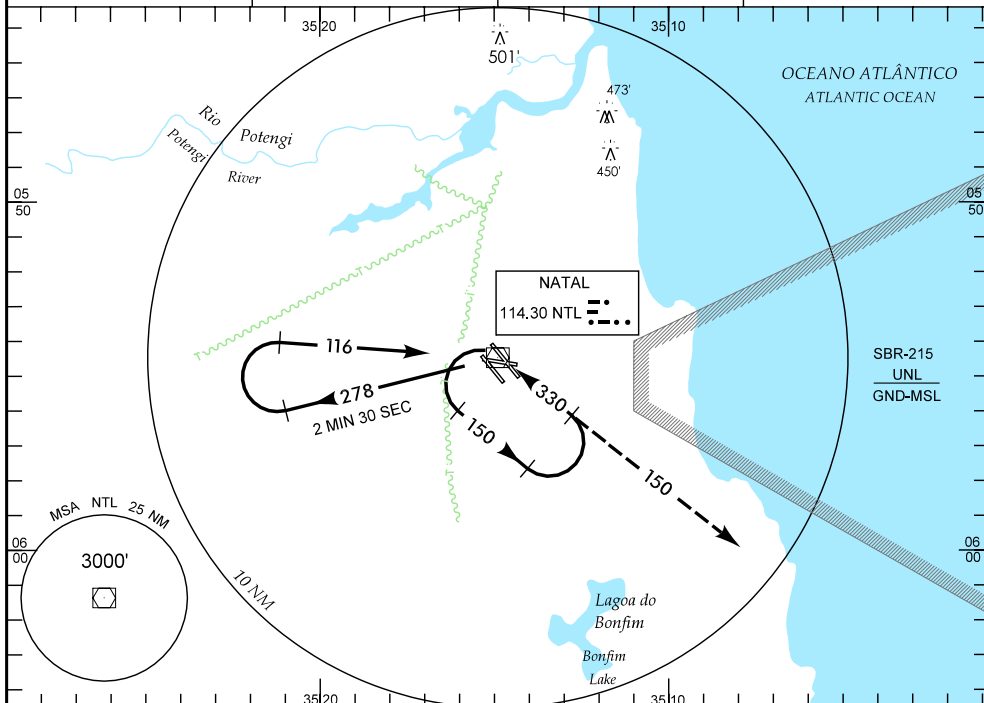
WGS-84

ATIS  
132.65

APP NATAL  
119.30 119.65 121.50

TWR NATAL  
118.70 122.80(MIL)  
121.50

GNDC NATAL  
121.90



**APROXIMAÇÃO PERDIDA**  
MISSED APPROACH

SUBIR PARA 3000' EM CURVA À DIREITA RDL 150.  
CLIMB TO 3000' TURNING RIGHT TO RDL 150.

**RMK:** ESPERA: IAS MAX 170 KT.  
HOLDING: IAS MAX 170 KT.

C	POUSO DIRETO RWY 12	STRAIGHT-IN TO RWY 12	IFR OPS	DIURNA / NOTURNA DAY / NIGHT	PARA CIRCULAR TO CIRCLING			
	A	VOR	VOR/DME					
T	MDA 690'	TETO CEILING 600'	MDA 530'	TETO CEILING 400'	CAT	MDA	TETO CEILING	VIS
A	VIS		VIS		A	690'	600'	1600 M
B	1600 M		1600 M		B			2400 M
C	2400 M		2000 M		C			2800 M
D	2800 M				D			3200 M
E					E			

RAZÃO DE DESCIDA NA APROXIMAÇÃO FINAL RATE OF DESCENT ON FINAL APPROACH									
KT	090	110	130	150	170	190			
FPM	700								

Z:\AIP-MA\MA\FN\NATAL-SBNT\bnf\_iac\_vor\_or\_vor\_dme\_z\_rw12.dgn

DEPARTAMENTO DE CONTROLE DO ESPAÇO AÉREO - COMAER - BRASIL