

**INSTRUMENT APPROACH
CHART (IAC)**

SANTARÉM / Maestro Wilson Fonseca, INTL (SBSN)

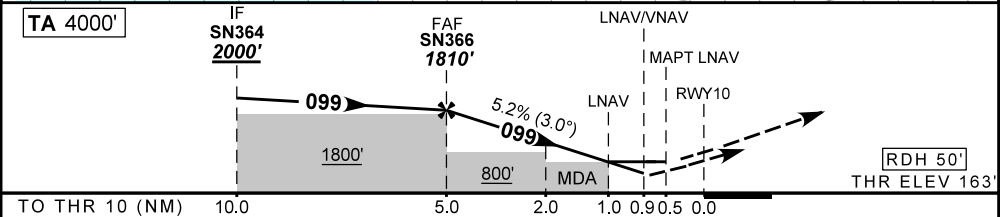
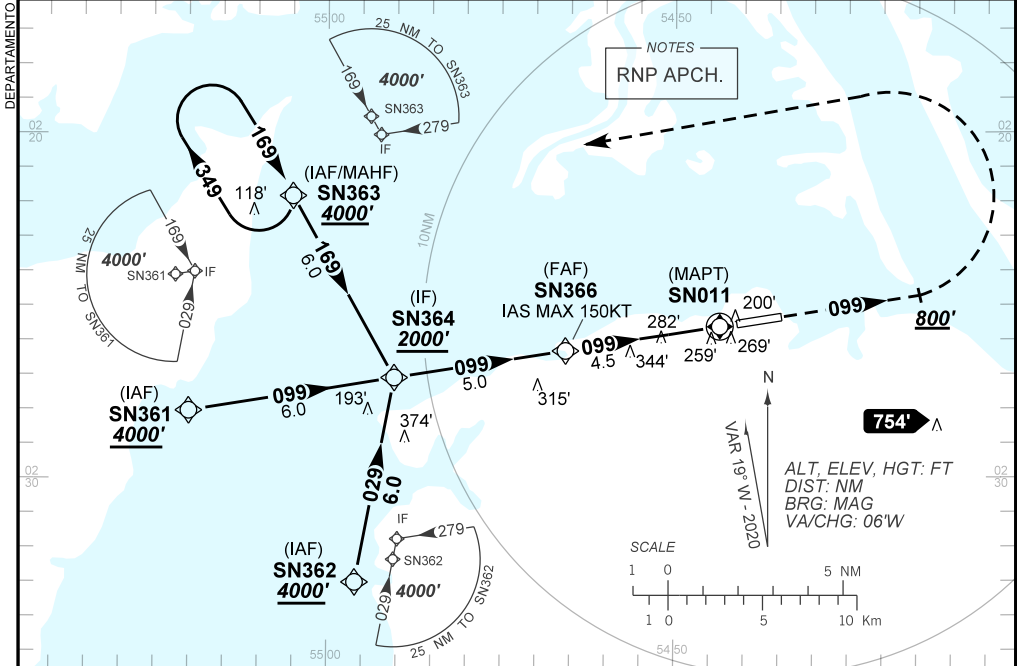
AD ELEV: 197'

RNP RWY 10

ATIS NIL	APP SANTARÉM 119.30	TWR SANTARÉM 118.10	GNDC NIL
TEMP LNAV/VNAV MIN 10°C / MAX 50°C	FINAL CRS 099°	FAF: 1810'	LNAV/VNAV DA / (OCH): 513' / (350')
			LNAV MDA / (OCH): 520' / (360')

APCH Perdida: 1) Subir para **4000'**. Manter rumo **099** até **800'**. Após, curvar à ESQUERDA direto SN363 para espera. 2) IAS MAX 150KT até **800'**.
 Missed APCH: 1) Climb to **4000'**. Maintain course **099** until **800'**. After, turn LEFT direct to SN363 for holding.
 2) IAS MAX 150KT until **800'**.

RMK: NIL.



SN366	4.0	3.0	2.0	1.0	0.9	RWY10	Ground Speed (KT)	090	110	130	150	170	190
1810	1487	1168	850	520	513	ALT	FPM	500	600	700	800	900	NA
1647	1324	1005	687	360	350	(HGT)	FAF-MAPT	NA					

STRAIGHT-IN	CAT	A	B	C	D	E	
	DA / (OCH)	513' / (350')					NA
LNAV/VNAV	ALS/NO ALS/ RVR ALS (m)	NIL / 1600 / NIL					
	MDA / (OCH)	520' / (360')					
LNAV	ALS/NO ALS/ RVR ALS (m)	NIL / 1600 / NIL					
	MDA / (OCH)	NA					
CIRCLING	VIS (m)	NA					