

**INSTRUMENT APPROACH
CHART (IAC)**

**SÃO PAULO / Congonhas (SBSP)
RNP RWY 35L (AR)**

AD ELEV: 2631'

CAT (A, B, C)

D-ATIS 127.65	APP SÃO PAULO 129.75 119.15 120.45 120.85 133.85	TWR SÃO PAULO 118.05 127.15	GNDC SÃO PAULO 121.90
-------------------------	--	---------------------------------------	---------------------------------

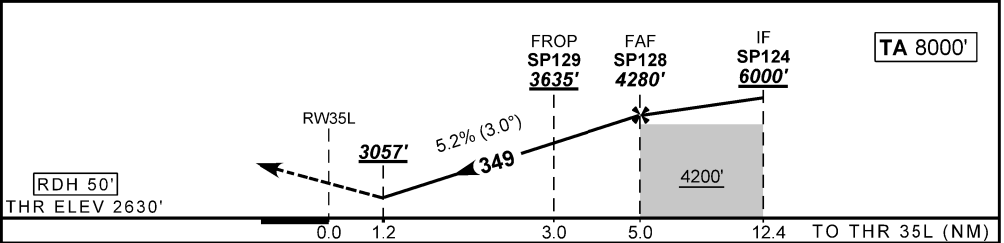
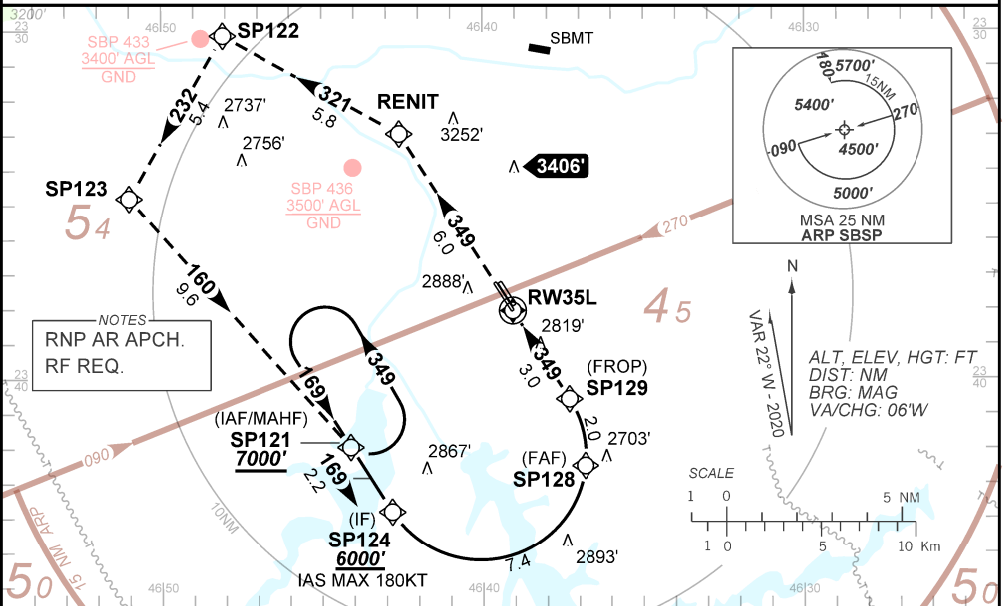
TEMP LNAV/VNAV MIN -10°C / MAX 46°C	FINAL CRS 349°	FAF: 4280'	RNP 0,3 DA / (OCH): 3057' / (427')	N/A
---	--------------------------	----------------------	--	-----

APCH Perdida: 1) Subir para **7000'** e manter rumo **349** até RENIT. Após, curvar à **ESQUERDA** no rumo **321** até SP122. Após, manter o rumo **232** até SP123. Após, manter o rumo **160** até SP121 para espera. 2) IAS MAX 170KT.

Missed APCH: 1) Climb to **7000'** and maintain course **349** until **RENIT**. After, turn **LEFT** course **321** until **SP122**. After, maintain course **232** until **SP123**. After, maintain course **160** until **SP121** for holding. 2) IAS MAX 170KT.

RMK: NIL.

DEPARTAMENTO DE CONTROLE DO ESPAÇO AÉREO



RW35L	1.2	2.0	SP129	4.0	SP128		Ground Speed (KT)	90	110	130	150	170	190
ALT	3057	3318	3635	3955	4280		FPM	500	600	700	800		NA
(HGT)	427	687	1004	1324	1649		FAF-MAPT	NA					

STRAIGHT-IN	CAT	A	B	C	D	E
	DA / (OCH)	3057' / (427')				
RNP 0.3	ALS/NO ALS/ RVR ALS (m)	1300 / 2000 / NIL				

AUTORIZAÇÃO ESPECIAL PARA AERONAVE E TRIPULAÇÃO REQUERIDA
SPECIAL AUTHORIZATION FOR AIRCRAFT AND CREW REQUIRED

Aprovação Específica
(ANAC IS 91.001)
Specific Approval
(ANAC IS 91.001)

CHANGES: NEW CHART