

**INSTRUMENT APPROACH
CHART (IAC)
AD ELEV: 257'**

MANAUS / Ponta Pelada, MIL (SBMN)

ILS Z or LOC Z RWY 09

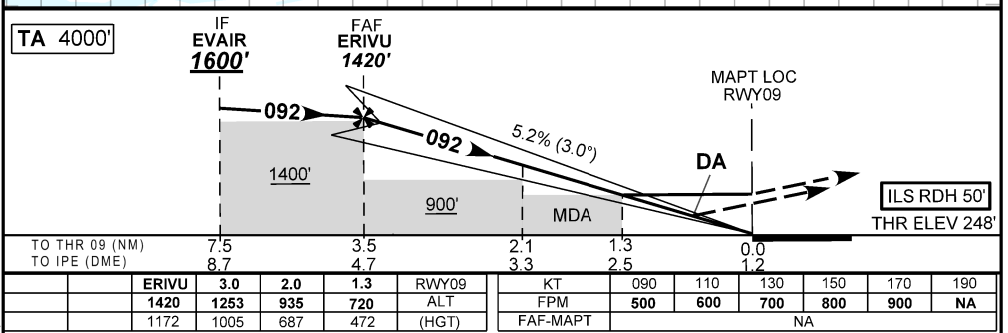
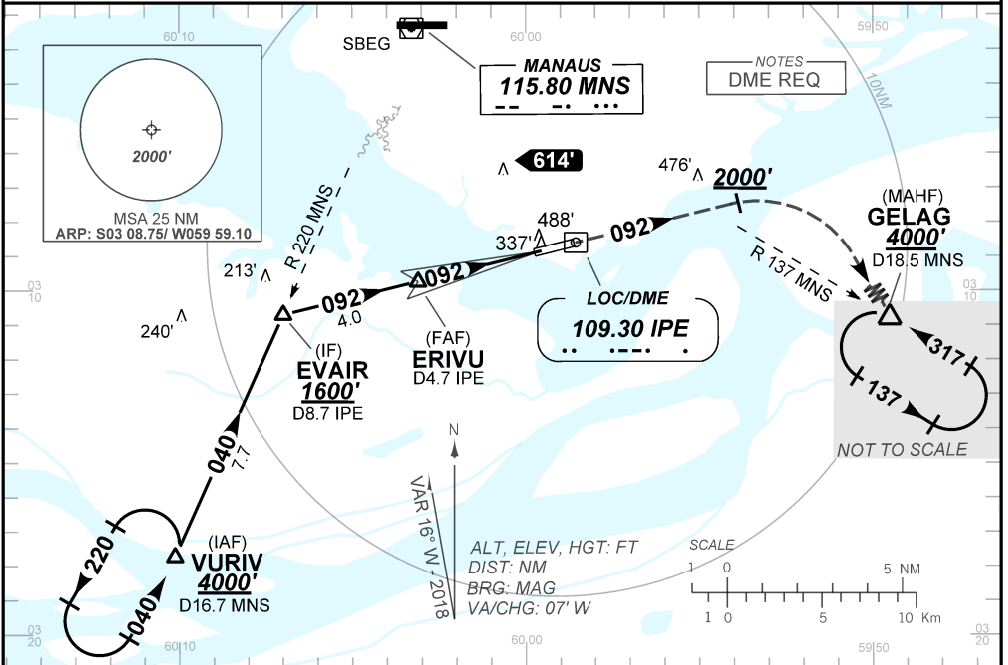
ATIS NIL	APP MANAUS 119.25 119.70 120.40	TWR PONTA PELADA 118.60	GNDC NIL
-------------	------------------------------------	----------------------------	-------------

LOC IPE 109.30 MHz	FINAL CRS 092°	FAF 1420'	CAT I DA / (OCH): REFER TO MNM	LOC only MDA / (OCH): 720' (480')
-----------------------	-------------------	--------------	-----------------------------------	--------------------------------------

APCH Perdida: 1) Subir para **4000'** com gradiente MNM 4%. Manter rumo **092°** até cruzar **2000'**. Então, curvar à DIREITA direto GELAG para espera. 2) IAS MAX 250KT.

Missed APCH: Climb to **4000'** with gradient MNM 4%. Maintain course **092°** until passing **2000'**. Then, turn RIGHT direct to GELAG for holding. 2) IAS MAX 250KT.

RMK: NIL



STRAIGHT-IN	CAT	A	B	C	D	E
	DA / (OCH)	448' / (200')			517' / (269')	
CAT I	ALS/NO ALS/RVR ALS (m)	NIL / 1200' / NIL			NIL / 1300' / NIL	
	MDA / (OCH)	720' / (480')				
LOC	ALS/NO ALS/RVR ALS (m)	NIL / 1600' / NIL			NIL / 2200' / NIL	

CHANGES: ELEV. FREQ.