

**INSTRUMENT APPROACH  
CHART (IAC)**

**PORTO SEGURO / Porto Seguro (SBPS)**

**AD ELEV: 169'**

**RNP Z RWY 10**

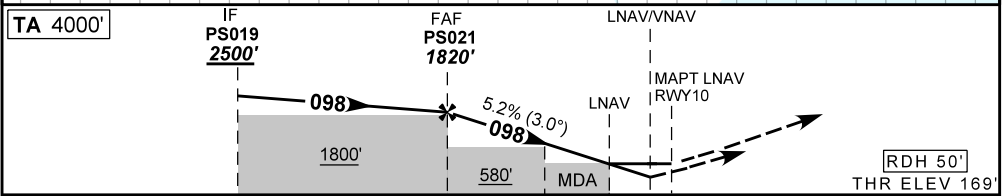
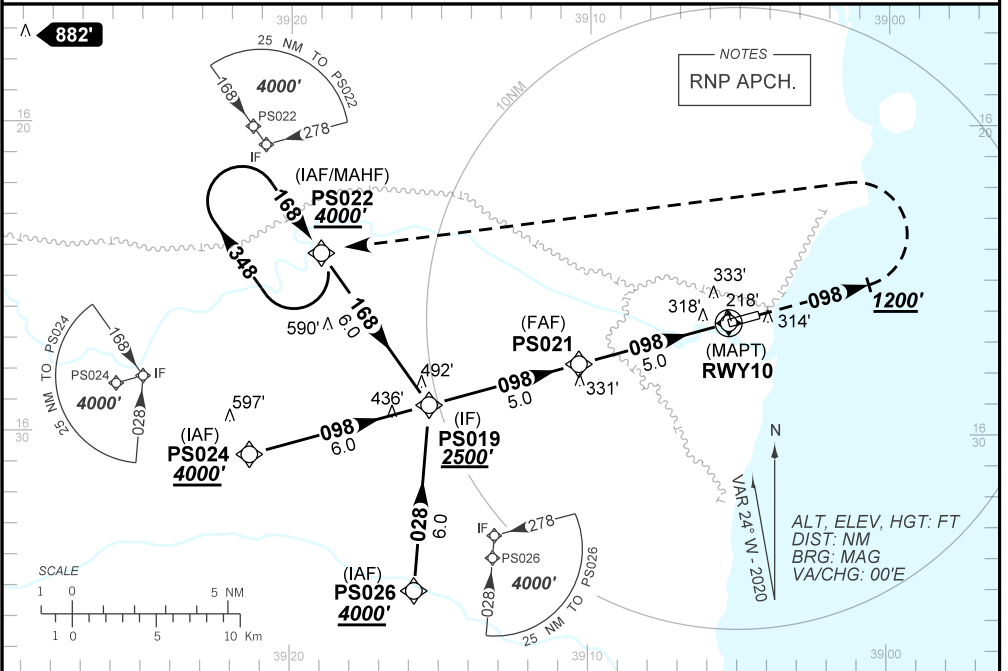
D-ATIS	APP PORTO SEGURO <b>120.90 119.60</b>	TWR PORTO SEGURO <b>118.85</b>	GNDC <b>NIL</b>
TEMP LNAV/VNAV <b>MIN 0°C / MAX 46°C</b>	FINAL CRS <b>098°</b>	FAF: <b>1820'</b>	LNAV/VNAV DA / (OCH): <b>479' / (310')</b>
		MDA / (OCH): <b>570' / (410')</b>	

APCH Perdida: Subir para **4000'**. Manter proa **098** até **1200'**. Após, curvar à ESQUERDA direto PS022 para espera.

Missed APCH: Climb to **4000'**. Maintain heading **098** until **1200'**. After, turn LEFT direct to PS022 for holding.

RMK: NIL.

DEPARTAMENTO DE CONTROLE DO ESPAÇO AÉREO



TO THR 10 (NM) 10.0 5.0 2.5 1.1 0.8 0.0

PS021	4.0	3.0	2.5	1.1	RWY10	Ground Speed (KT)	090	110	130	150	170	190
1820	1493	1174	1016	570	ALT	FPM	500	600	700	800	900	NA
1651	1324	1005	847	410	(HGT)	FAF-MAPT	NA					

STRAIGHT-IN	CAT	A	B	C	D	E
LNAV/VNAV	DA / (OCH)	479' / (310')				NA
	ALS/NO ALS/ RVR ALS (m)	NIL / 1400 / NIL				
LNAV	MDA / (OCH)	570' / (410')				
	ALS/NO ALS/ RVR ALS (m)	NIL / 1600 / NIL		NIL / 1900 / NIL		
CIRCLING	MDA / (OCH)	NA				
	VIS (m)					

CHANGES: D-ATIS, DEC. FREQ. LAYOUT, PROC.